

The background is a map of Madagascar with a semi-transparent green overlay. The map features several blue location pins, green circular markers with numbers (2, 3, 4, 5, 6, 7, 9, 10, 19), and road labels (N1, N19). Place names like 'Guérin', 'Kabou', and 'Kara' are visible. The title 'MapRoulette: Community-Driven Evolution' is centered in large white text.

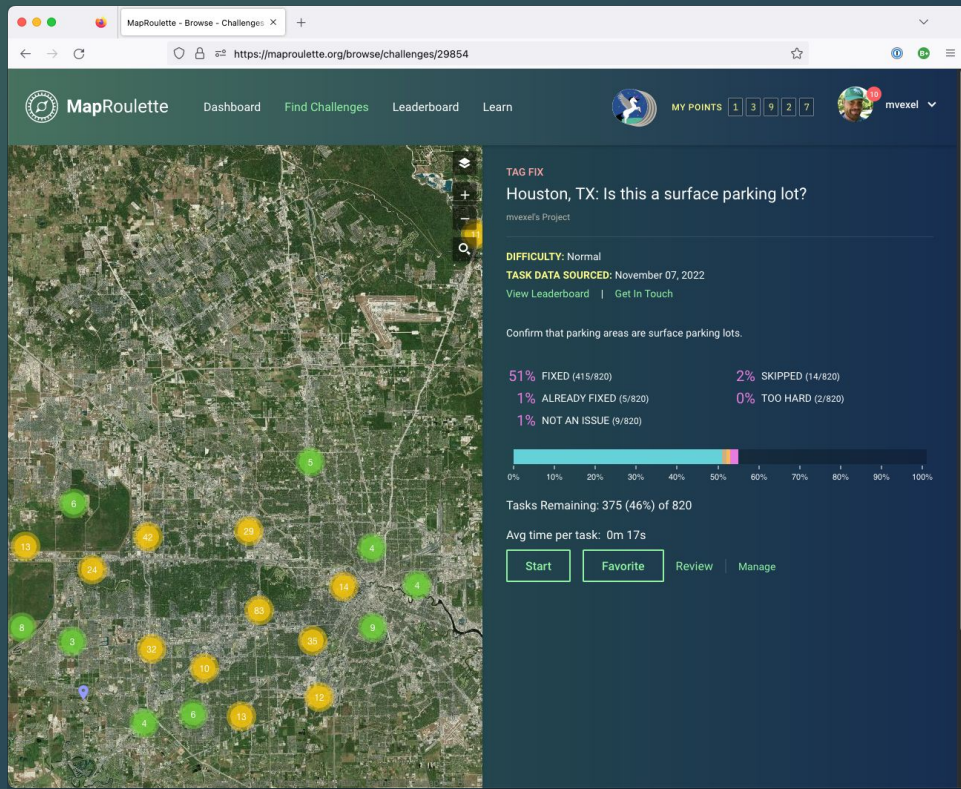
# MapRoulette: Community-Driven Evolution

Thanks for 10 years of help and feedback!

Martijn van Exel  
Pista Ng Mapa / SOTM Asia 2022

# About MapRoulette

- Breaking up contributions to OSM into simple tasks
- Can be used to “trickle” external data into OSM.
- Make tasks public to crowdsource to OSM community, or keep them private to your organization
- Can be as simple as 1-click confirmation of attribute value



# Origins of MapRoulette

## TIGER Road import in United States (2008)

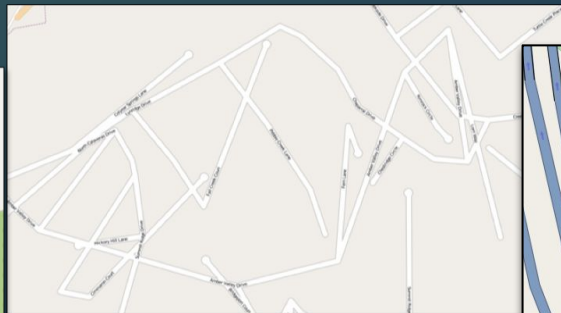
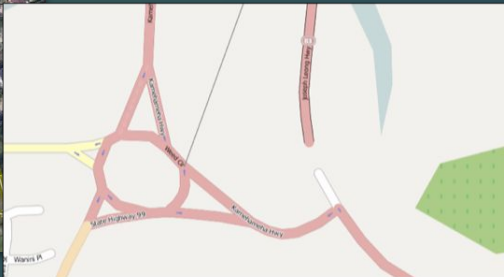
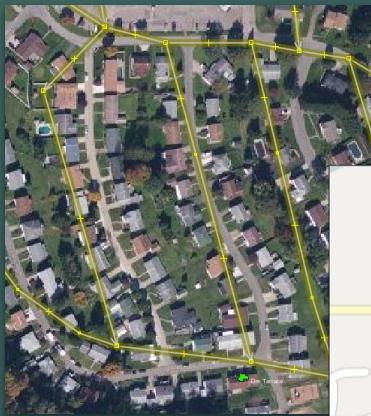
Full coverage road network, but very poor quality (alignment + classification)

+

## License Change CC to ODbL (2012)

OSM changed the license of the map data from Creative Commons to ODbL in 2012. All mappers who had contributed needed to agree to keep their data in the map.

=



**An enormous clean up and improvement effort was needed**

**The community was still quite small in  
2012**

<100 daily active mappers

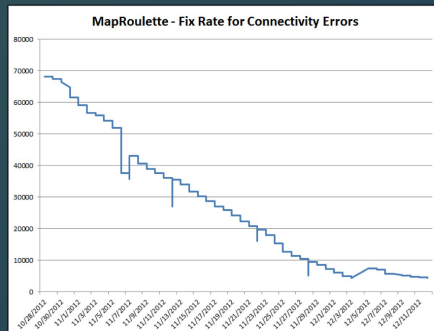
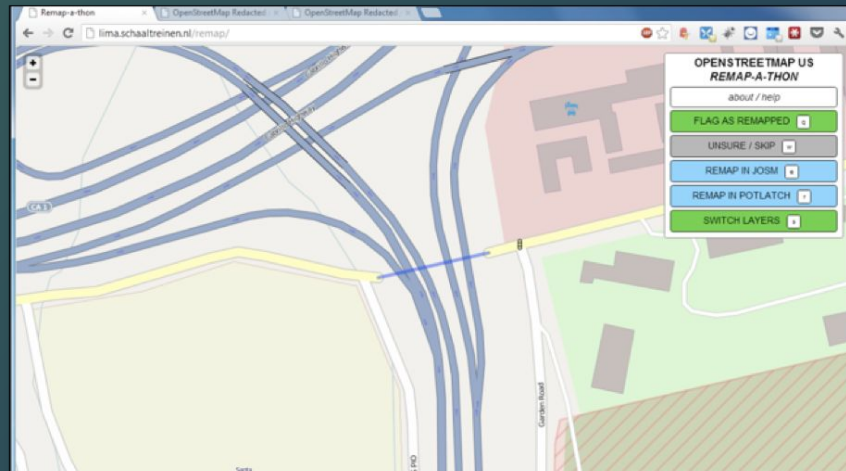
**Something was needed to organize the work**

# MapRoulette

So the idea of MapRoulette was born:  
A tool to work on **small, randomly assigned tasks**. The aims were:

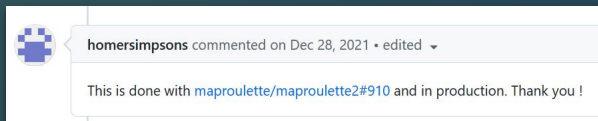
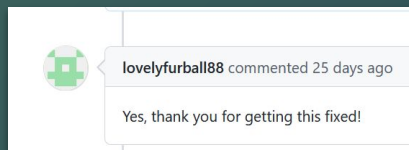
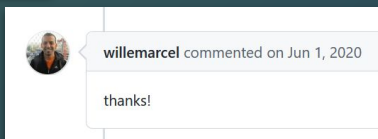
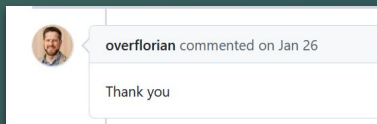
1. To make a huge mapping effort feel **more doable by breaking it up in small tasks**
2. Make repetitive mapping **more fun**

**Success:** Cleanup completed in < 3 months



# ★★★★ Mapper Feedback ★★★★★

- 10 years of MapRoulette operation
- More than 700 issues closed
- 2 new major versions, >30 minor versions

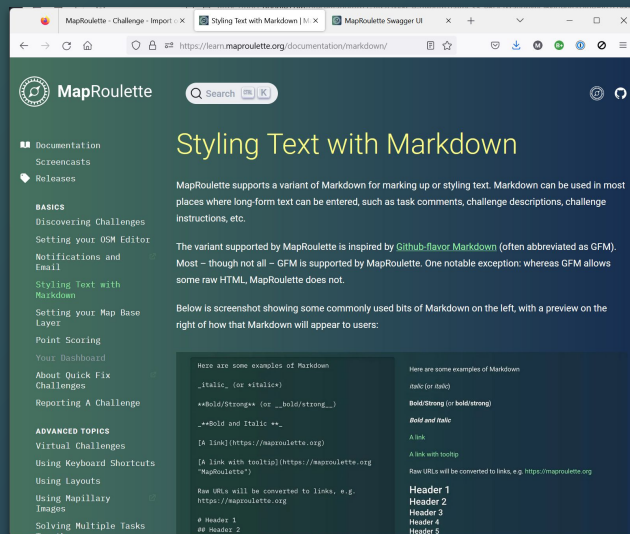


124 Open	166 Closed
Changeset comment not included	#977 by angoca was closed on Sep 27
"Unable to render the map: No value provided for variable {zoom}. Attention"	#967 by tordans was closed on Sep 27
geojson upload not recognized because of right hand rule, despite using	#963 by PCClimate was closed on Sep 27
Provide link to relation/way if area is too large	#946 by double-a was closed on Sep 27
OSM notes as challenges	#945 by Binnette was closed on May 19
History panel shows wrong element	#943 by tordans was closed on Sep 27
[FEATURE REQUEST] Allow users to prioritize challenges with cooperative	#919 by tsmock was closed on Nov 2, 2021
Swagger docs are down	#913 by rYR79435 was closed on Sep 10, 2021
Bounding boxes applied to challenge through API are not applied to imp	#908 by atiannicelli was closed on Dec 11, 2021
[bug] Unable to upload tasks using the /vs/tasks API after latest release.	#895 by atiannicelli was closed on Jun 7, 2021
Feature request: Task/Challenge descriptions point to markdown URL	#892 by herriotto was closed on May 19
MR server failing	#874 by matkoniecz was closed on Jan 28, 2021
Overpass Challenge with Timeout > 120s	#842 by boldtrn was closed on Oct 21, 2020
wiki home page should link to maproulette3 docs	#833 by donalhunt was closed on Sep 9, 2020
JsonValidationError when creating virtual challenge	#829 by shawat94 was closed on Aug 20, 2020

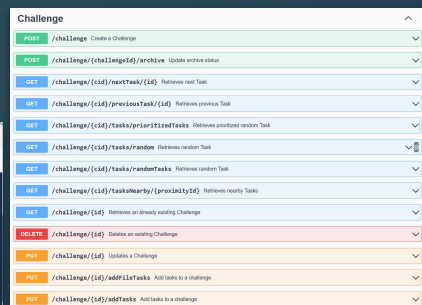
# ★★★★ Mapper Feedback ★★★★★

2013: “We love the task-based style of work, but we wish we could have more different types of challenges, and make our own!”

- Full REST API for creating and manipulating challenges
- Challenge Wizard introduced in MapRoulette 3.0
- Extensive documentation, Online tutorials, talks
- Option to keep Challenges Private



Documentation Website



MapRoulette API

# ★★★★ Mapper Feedback ★★★★★

2016: “We like that there are so many challenges now, but they are hard to find!”

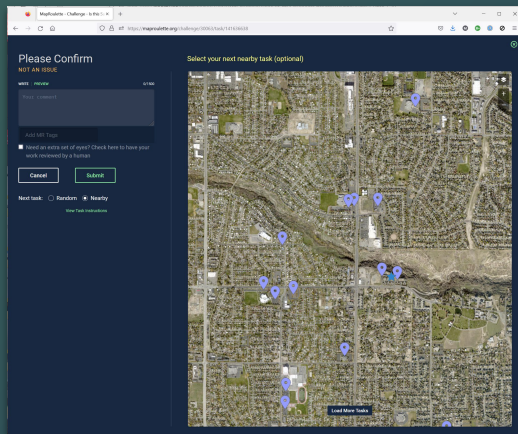
- Advanced searching and filtering
- Themes and Difficulty
- Featured and Popular Challenges
- Browsable Map

The screenshot displays the OpenStreetMap Challenges web application. The interface includes a header with filters for 'Challenges', 'SORT BY' (Default), 'WORK ON' (Anything), and 'DIFFICULTY' (Any). A search bar is located on the right. The main content area is divided into two columns. The left column lists challenges with their locations and descriptions, including 'Invalid turn restriction' (OSMCha detections), 'Convert graveyard' (World Binnette's Project), and 'Convert cemetery World' (World Binnette's Project). The right column shows a list of challenges with their titles, descriptions, and difficulty levels. The challenges listed are: 'SDP import: Hair Salons and Barbershops' (Santa Clara County points of interest), 'Missing Maps: Mizoram India road network (2)' (Missing Maps: road network improvements), 'Missing "lit" tags in Dortmund (Round 3)' (Beleuchtung in Dortmund), 'Weryfikacja przystanków autobusowych z tagiem covered=yes' (Poprawki tagowania), and 'Germany: Add missing buildings in residential areas' (POPULAR). A map view is visible in the background, showing a satellite image of a region with several yellow and green circular markers indicating challenge locations.

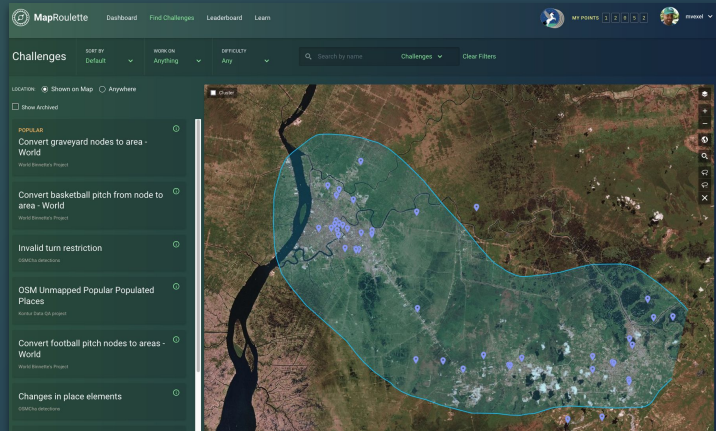
# ★★★★ Mapper Feedback ★★★★★

2018: “There are too many tasks, I would like to just work on tasks close to me!”

- Virtual Challenges
- Local Knowledge Only Challenges
- Next task: Nearest instead of Random



Select your next task from a map of nearby tasks



A virtual challenge being created

REQUIRES LOCAL KNOWLEDGE

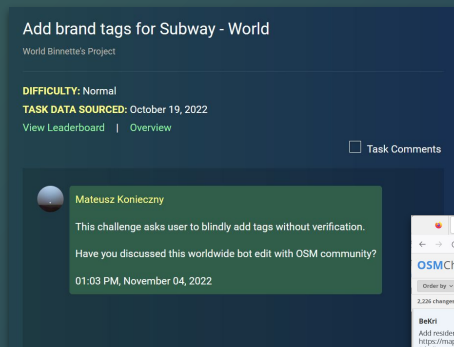
☐ Yes ☒ No

Set “Local Knowledge Required” when creating a Challenge

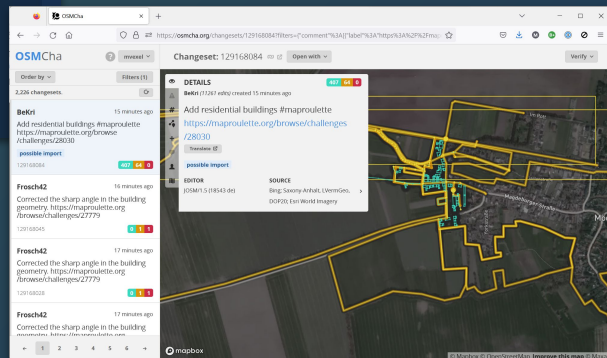
# ★★★★ Mapper Feedback ★★★★★

2020: “MapRoulette is causing Bad Edits, BAN MAPROULETTE!”

- Comment on Challenges
- Email address for Creators
- Limits to number of Tasks
- Automatic Archiving
- Peer Review
- Challenge Link in Changeset
- *Trust Remains Highest Priority*



Discussion about a Challenge

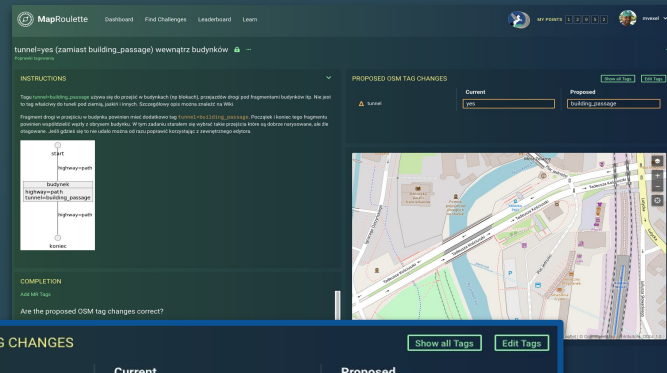
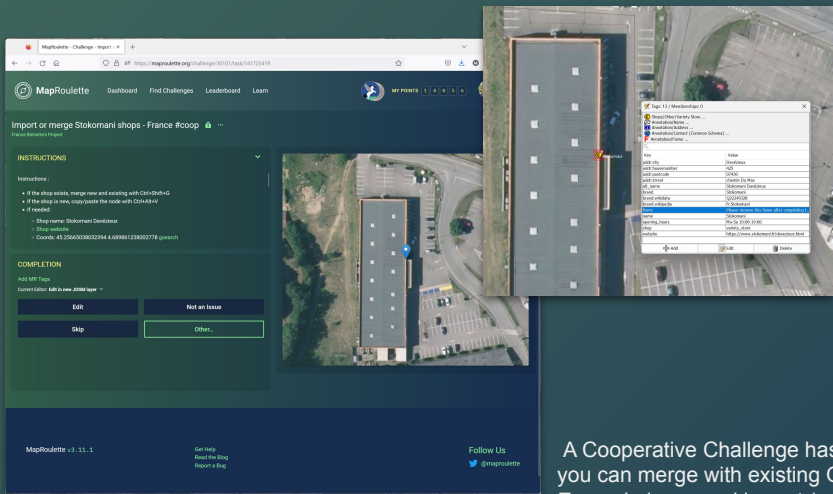


Links to MapRoulette Challenge URL in Changeset

## ☆☆☆Mapper Feedback☆☆☆

## 2020: “Can we use MapRoulette to avoid bot edits?”

- Tag-Fix Challenges
- Cooperative Challenges



A Tag-Fix Challenge lets you confirm a change of one or more tags in one click without having to go to iD or JOSM

A Cooperative Challenge has built-in OSM data  
you can merge with existing OSM data in JOSM.  
Example is manual import / merge of chain store  
in France

**What's next for  
MapRoulette?**

# More **Integrations** with other apps

StreetComplete / GoMap!! / MapComplete / Vespucci / OSMAnd / (Rap)iD

- Further improve API / documentation
- encourage 'local knowledge required' challenges

## There are **plenty of good mobile apps**

I don't think we need a *MapRoulette Mobile*, but perhaps make maproulette.org mobile friendly?

# Improved **communication** between challenge makers and mappers

The tools are there but sometimes too hidden away. It needs to be very easy to communicate

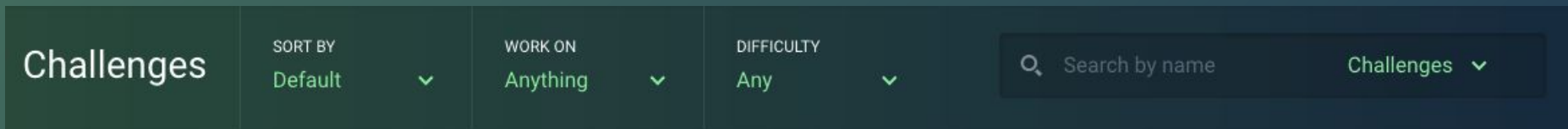
## More **accountability** for challenge makers



We already have auto-archiving and improved notifications to challenge makers when their challenges are completed. This can be further improved.

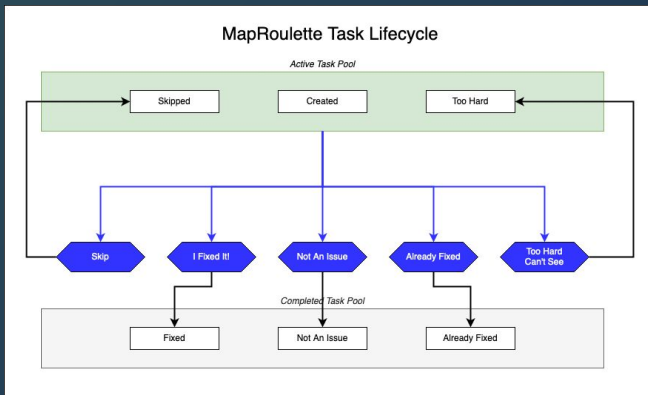
# Better discovery

More ways to search and filter. Make it easier to split a challenge into smaller areas. Making sure that challenges are current and relevant.



## Reconsider the Task Lifecycle

“Too Hard”, “Can’t Fix” “Skip”, “Already Fixed” confusing too many mappers. Make these actions clearer? Add more options? Perhaps “Request Help From Local Mapper”?



# Thanks!

Martijn van Exel | [@mvexel@en.osm.town](mailto:@mvexel@en.osm.town) | [martijn@vanexel.net](mailto:martijn@vanexel.net)  
MapRoulette on Mastodon: [@maproulette@en.osm.town](https://mastodon.social/@maproulette)