

# At 18 years old, is OSM entering adulthood?

A look at OSM growth patterns among different regions around the globe

# About us

- **Jennings Anderson** → OpenStreetMap researcher exploring the evolution of the project both as a community of mappers and a map. Research Scientist at Meta.
- **Martijn van Exel** → Long time OpenStreetMap contributor and organizer, previously on OSM US / OSMF board. Maker of MapRoulette. Organizer of OpenStreetMap Utah. Working at Kaart.



# The Questions we Asked

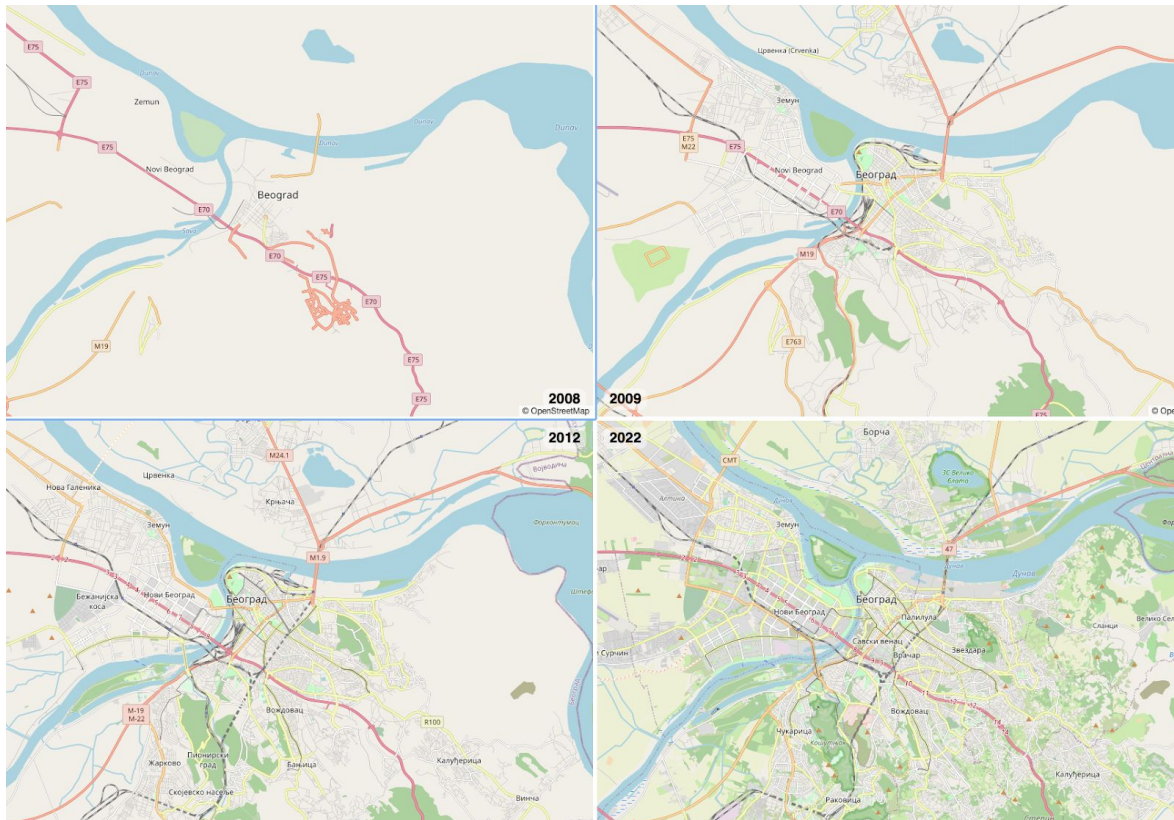
- OpenStreetMap is 18 years old. Does that mean that we're done "Creating" the map and are in "Maintenance Mode"?
- Are we, as a community, good stewards of the data?
- Do these questions have different answers depending on where in the world, or in which U.S. state, you look?
- Are we seeing changes in the number of mappers actively contributing?

# OpenStreetMap is growing up

The map looks “done” in a lot of places now.

It can be harder to find things to improve or add.

How does this affect where, how, and how much people map?



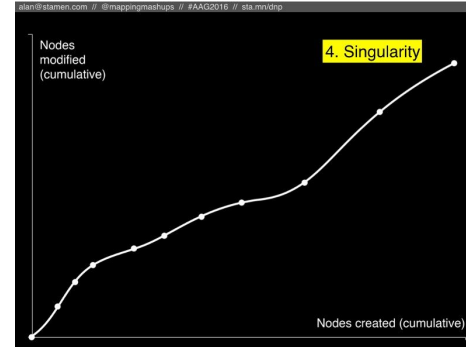
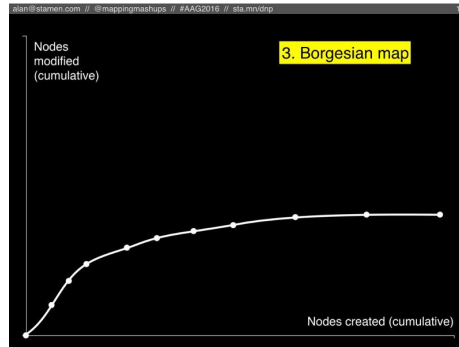
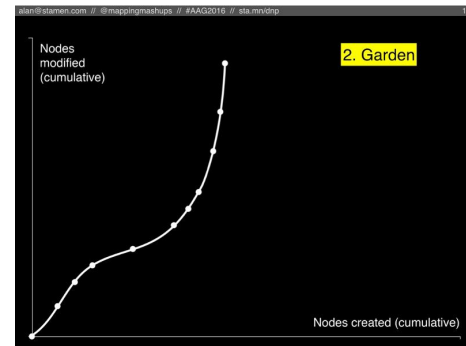
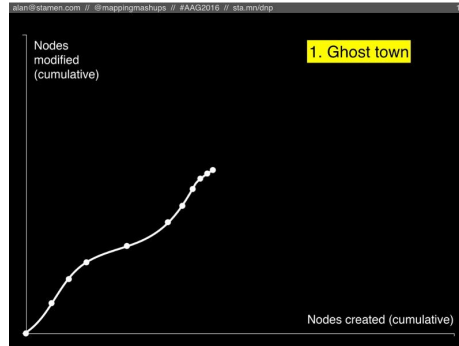
# OpenStreetMap is growing up

Let's revisit a favorite  
OSM investigation:

***“Map Gardening”***

Borrowed from “wiki  
gardening”

4 possible scenarios:

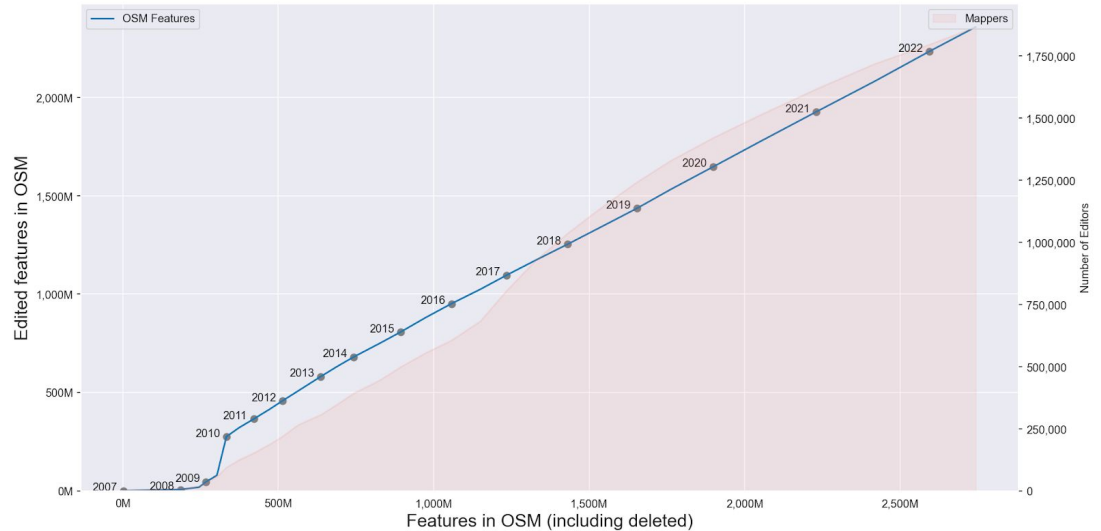


Alan McConchie | April 8, 2016

[OpenStreetMap past\(s\). OpenStreetMap future\(s\)](#)

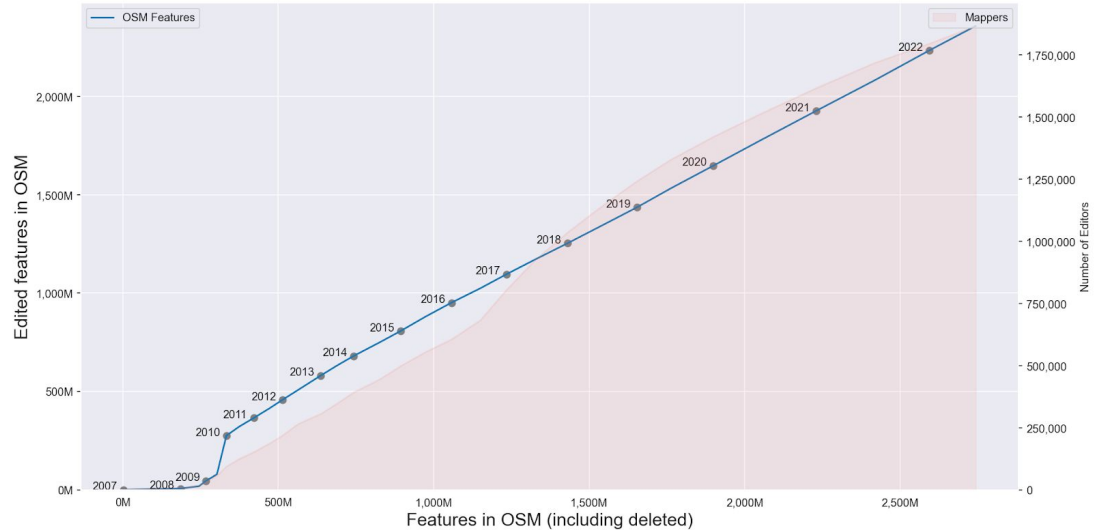
# The (Actual) Global Trend

1. The ratio of updated features to total features is linear as the amount of data added each year continues to increase
2. The number of daily mappers also follows this trend.



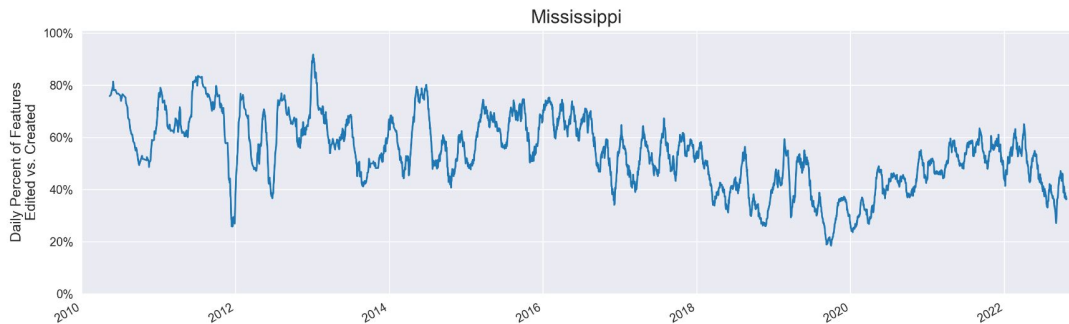
# The (Actual) Global Trend - Conclusions

1. Mappers do not seem put off by the fact that there is not as much new stuff to add
2. Mappers still find plenty of new things to add, but maintenance has **always been equally important**

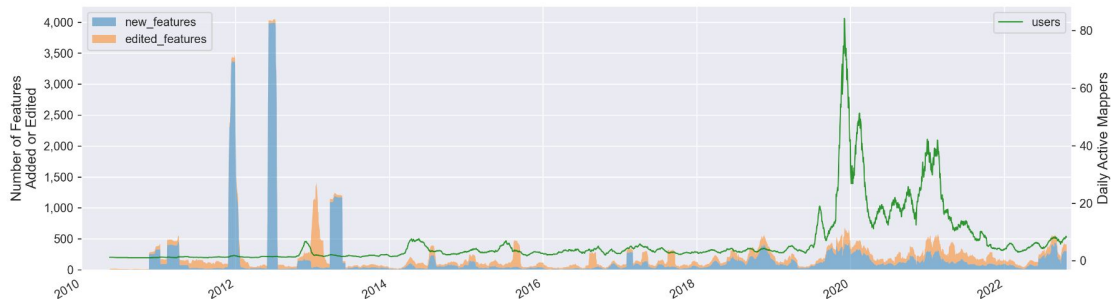


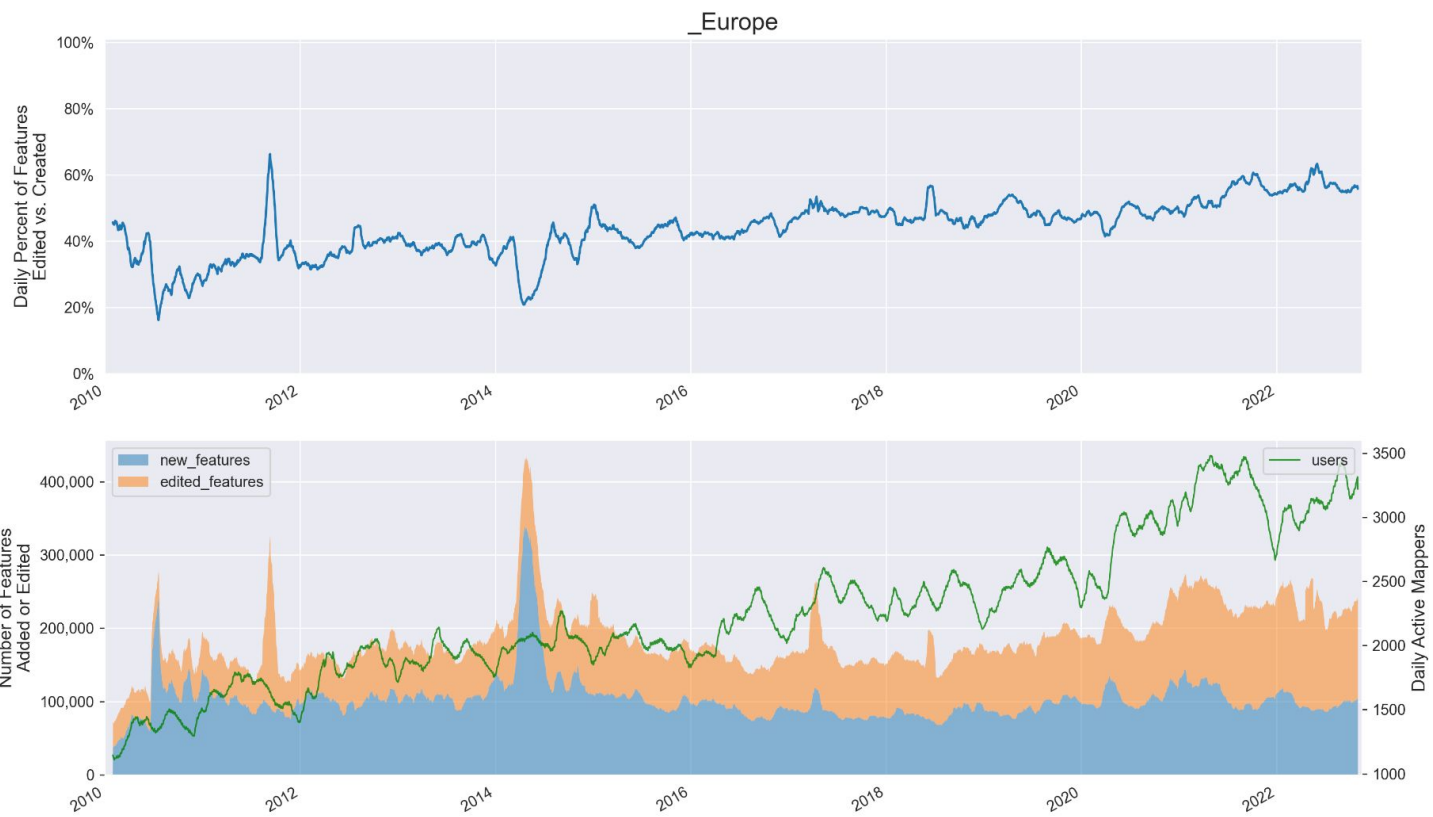
# Breakdowns - How to read these

**Top chart:** daily percentage of features updated (0% means everything is new, 100% means everything is an update)

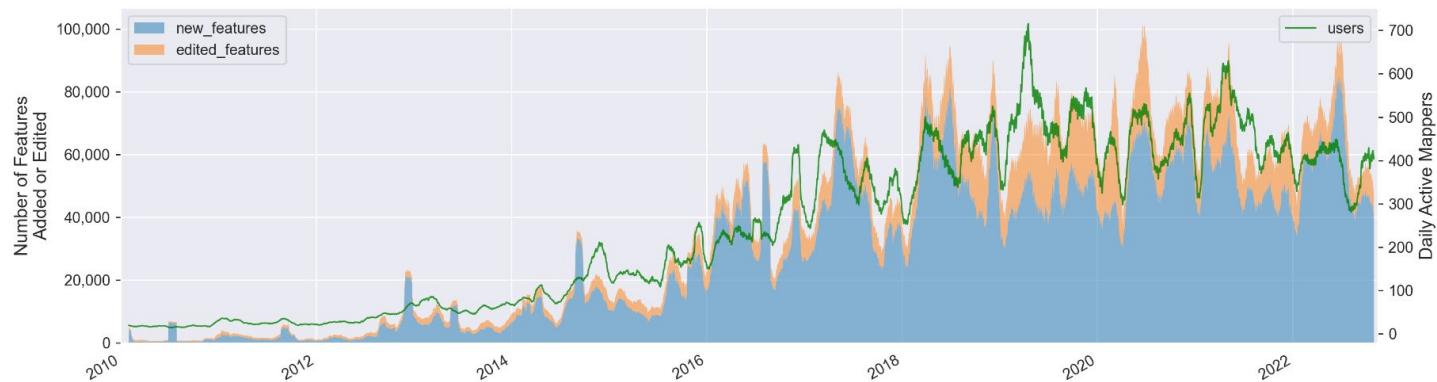
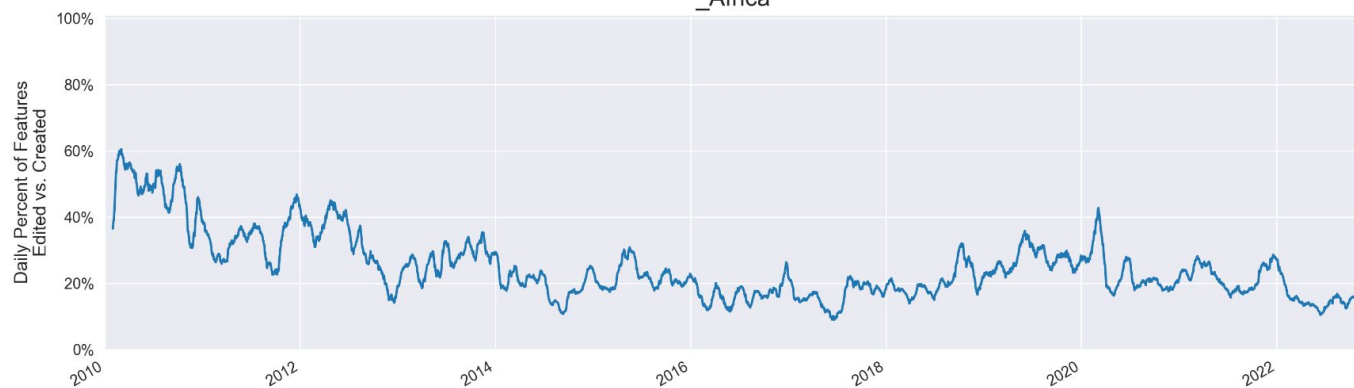


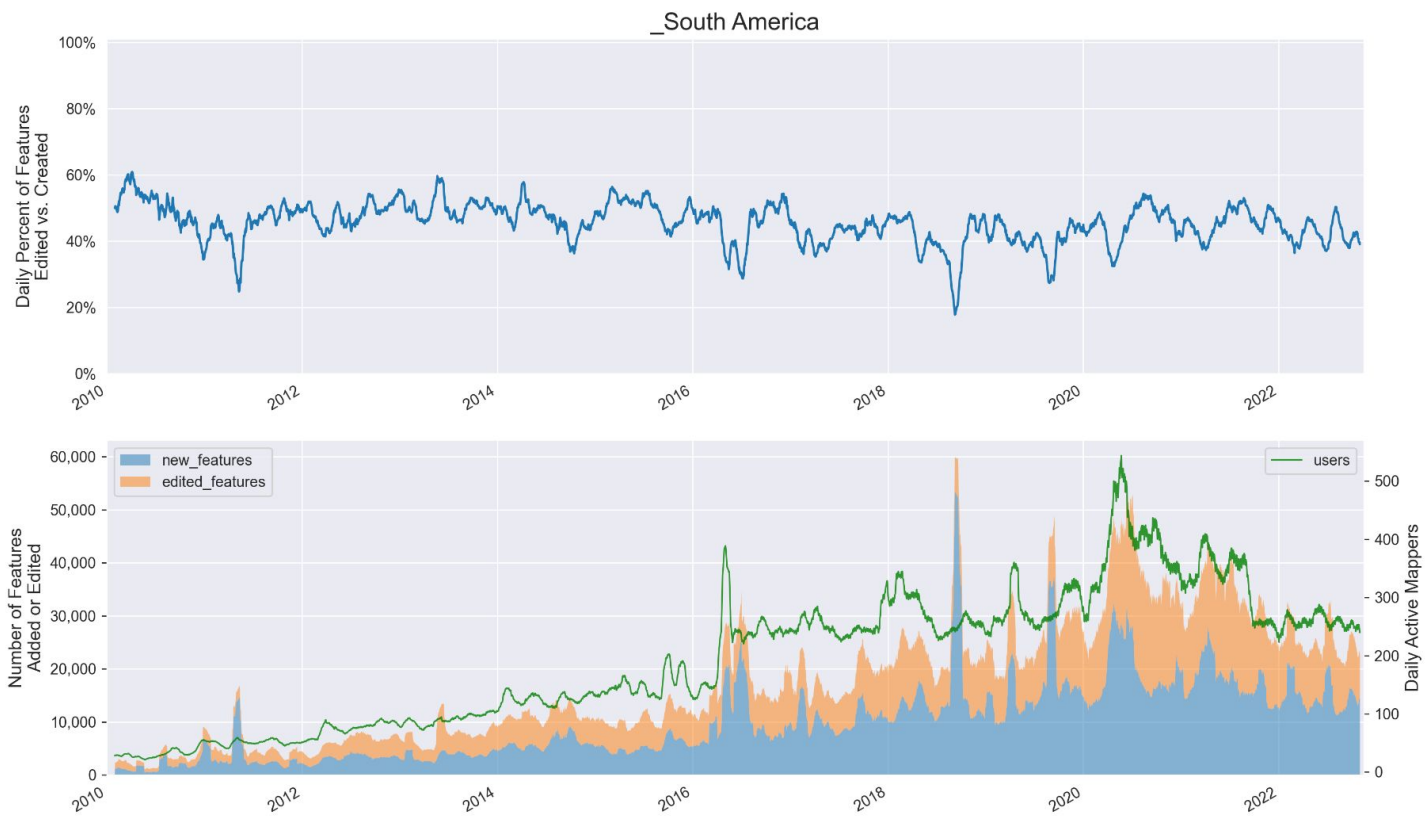
**Bottom chart:** absolute amounts of daily active mappers and new and edited features.

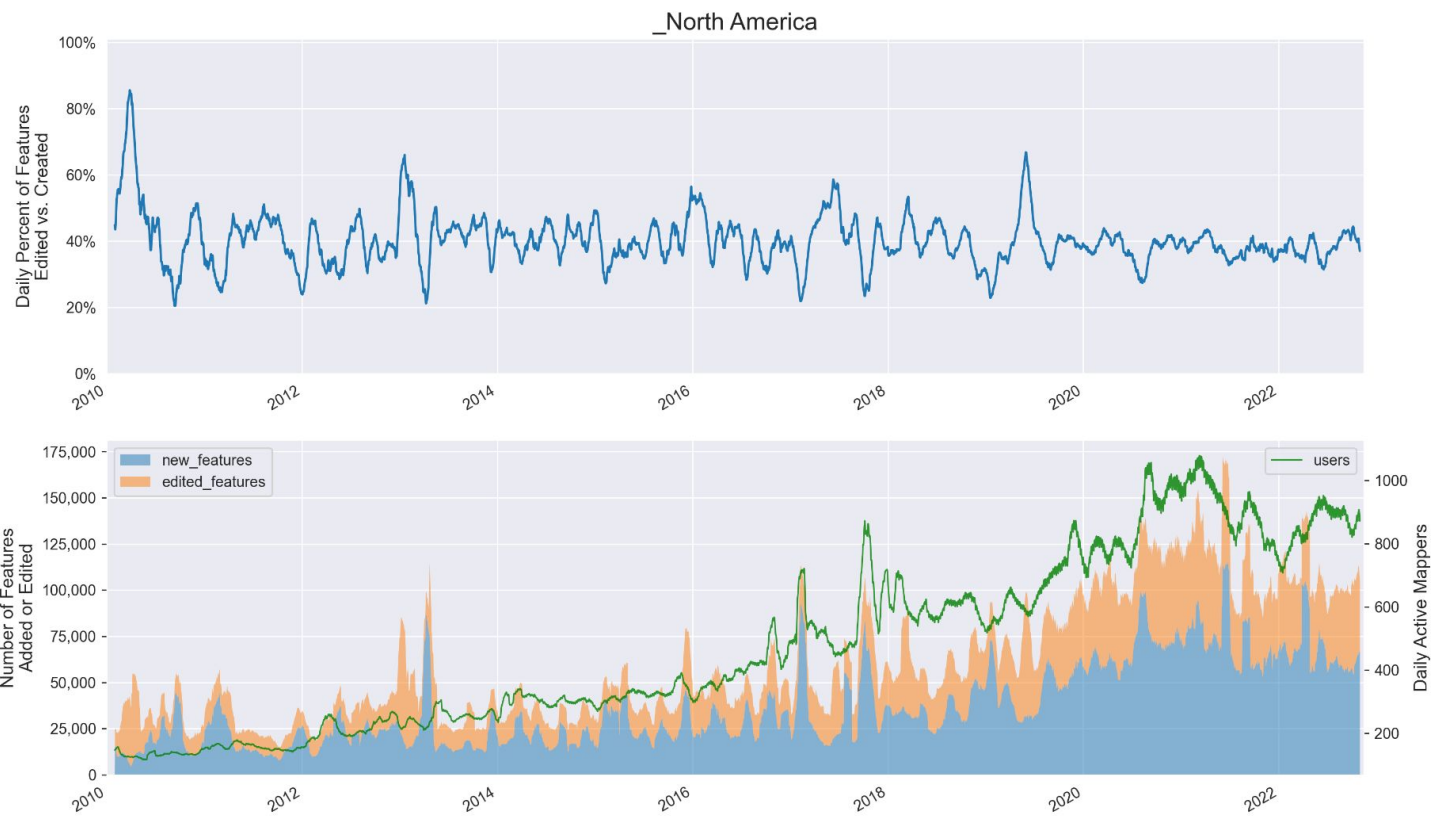


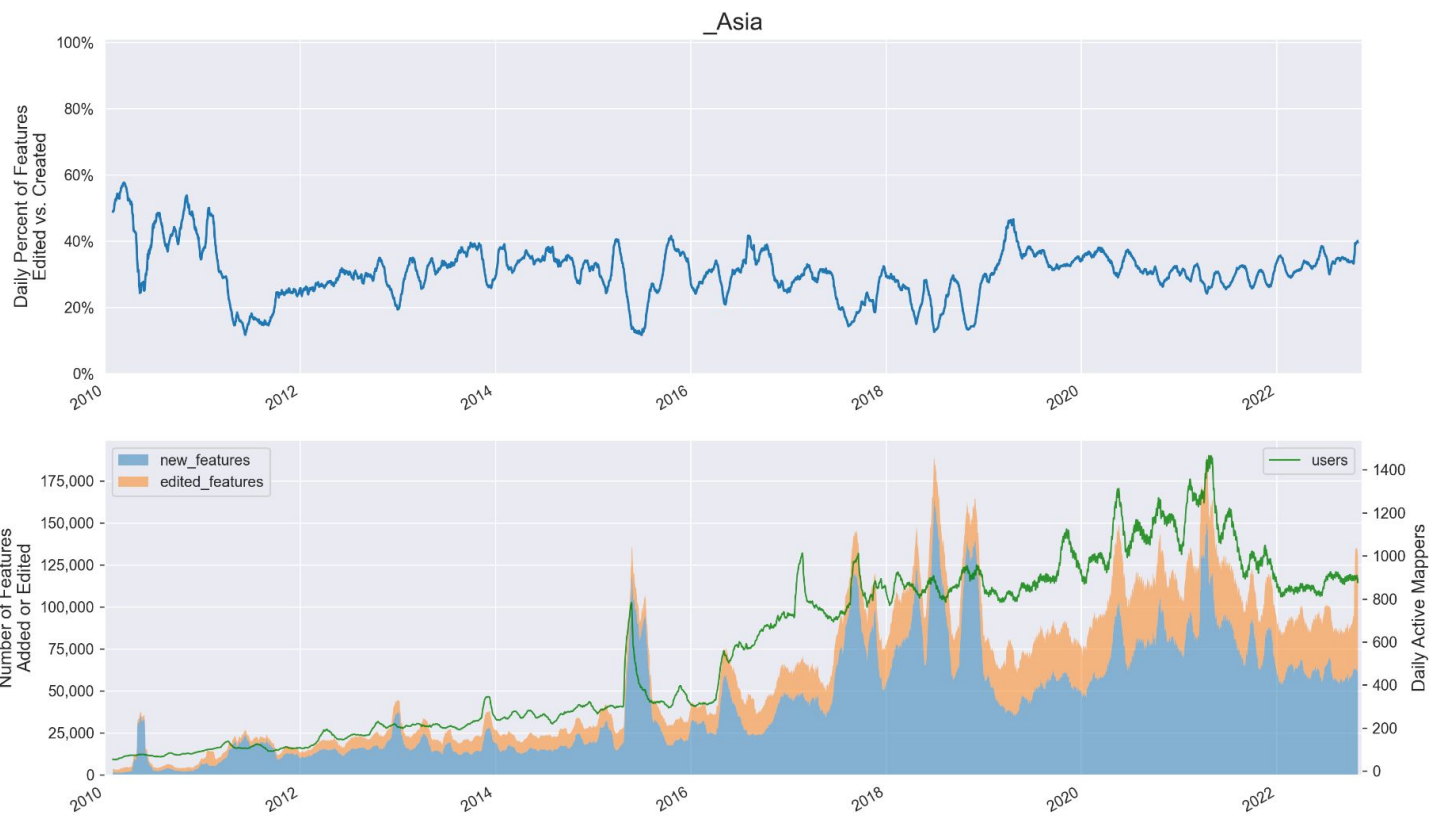


## \_Africa

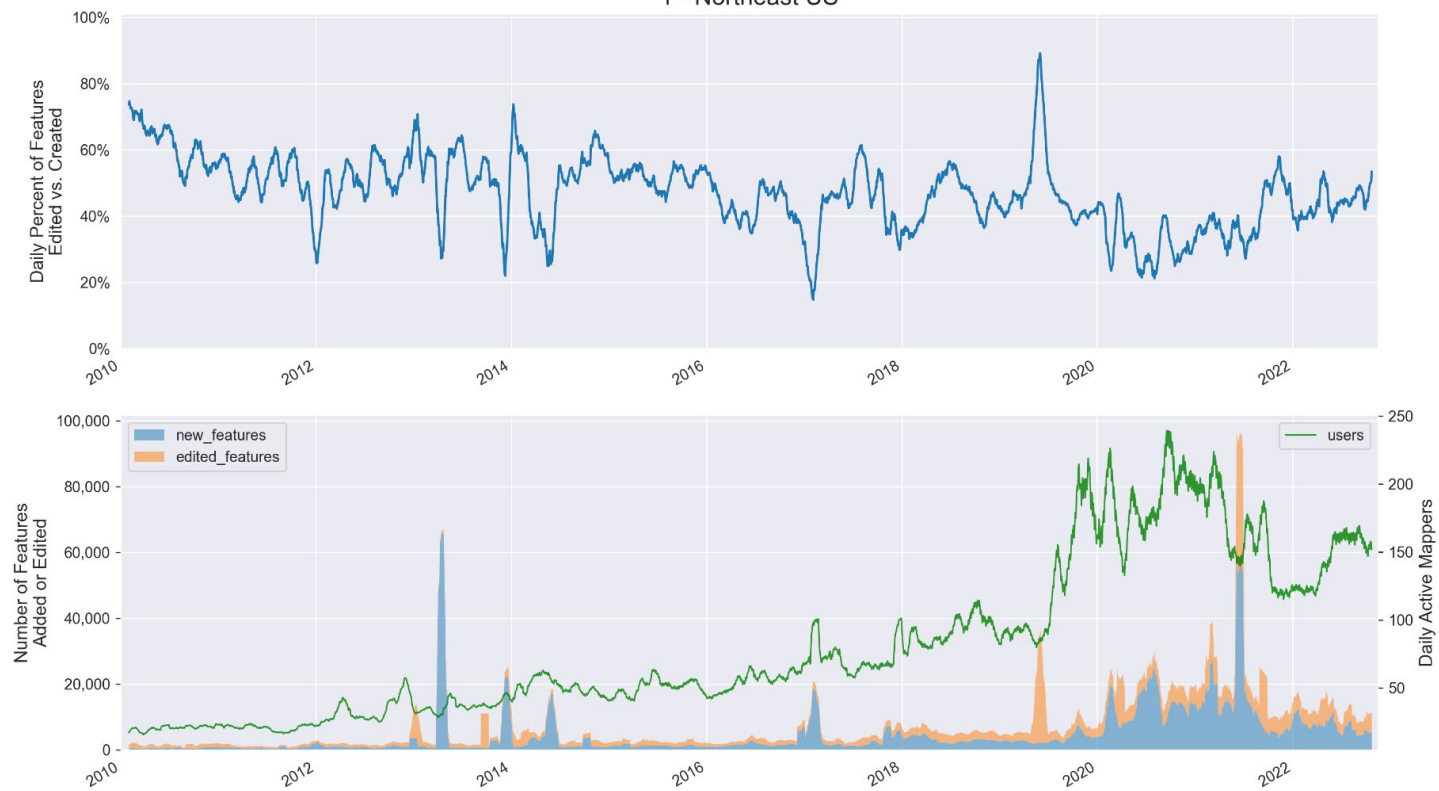




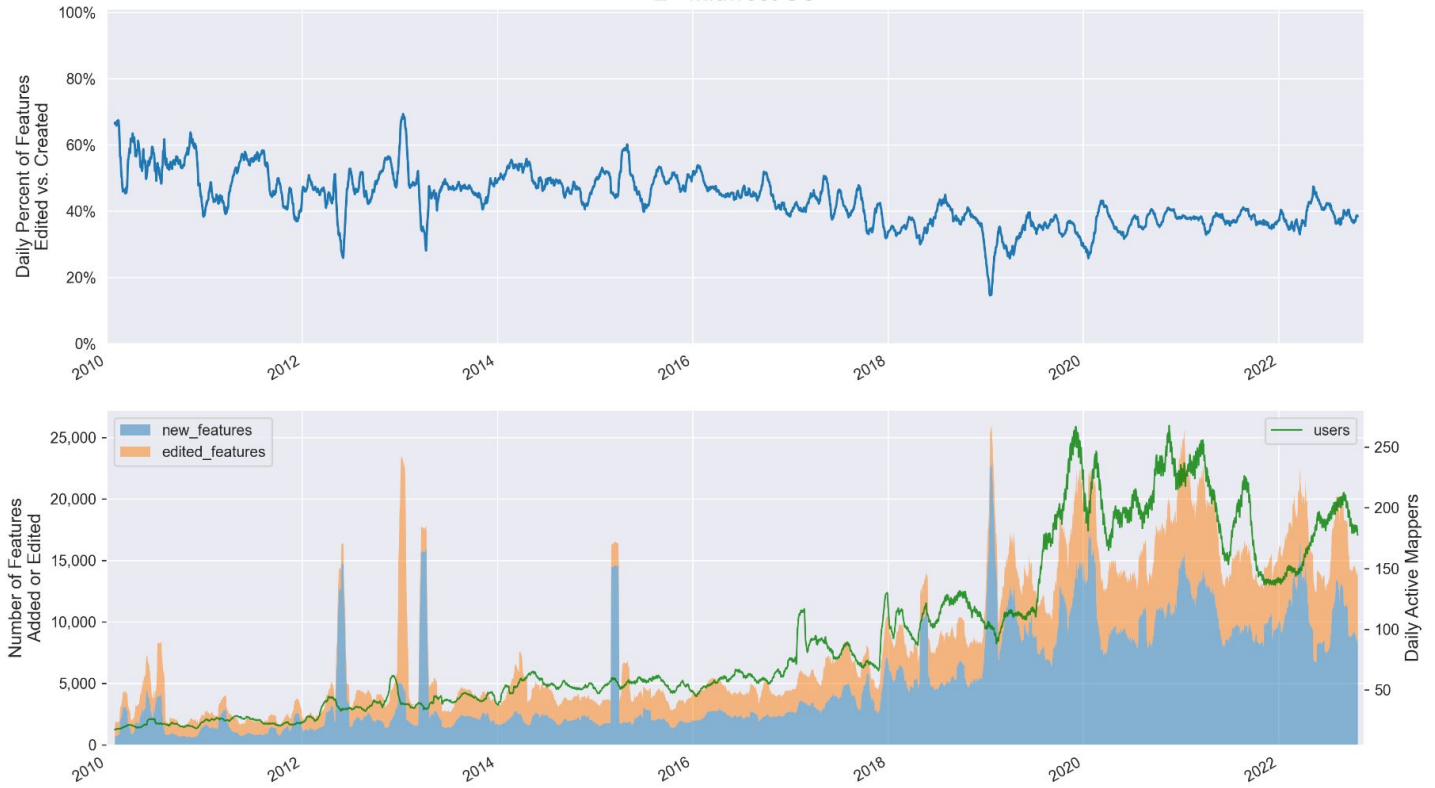




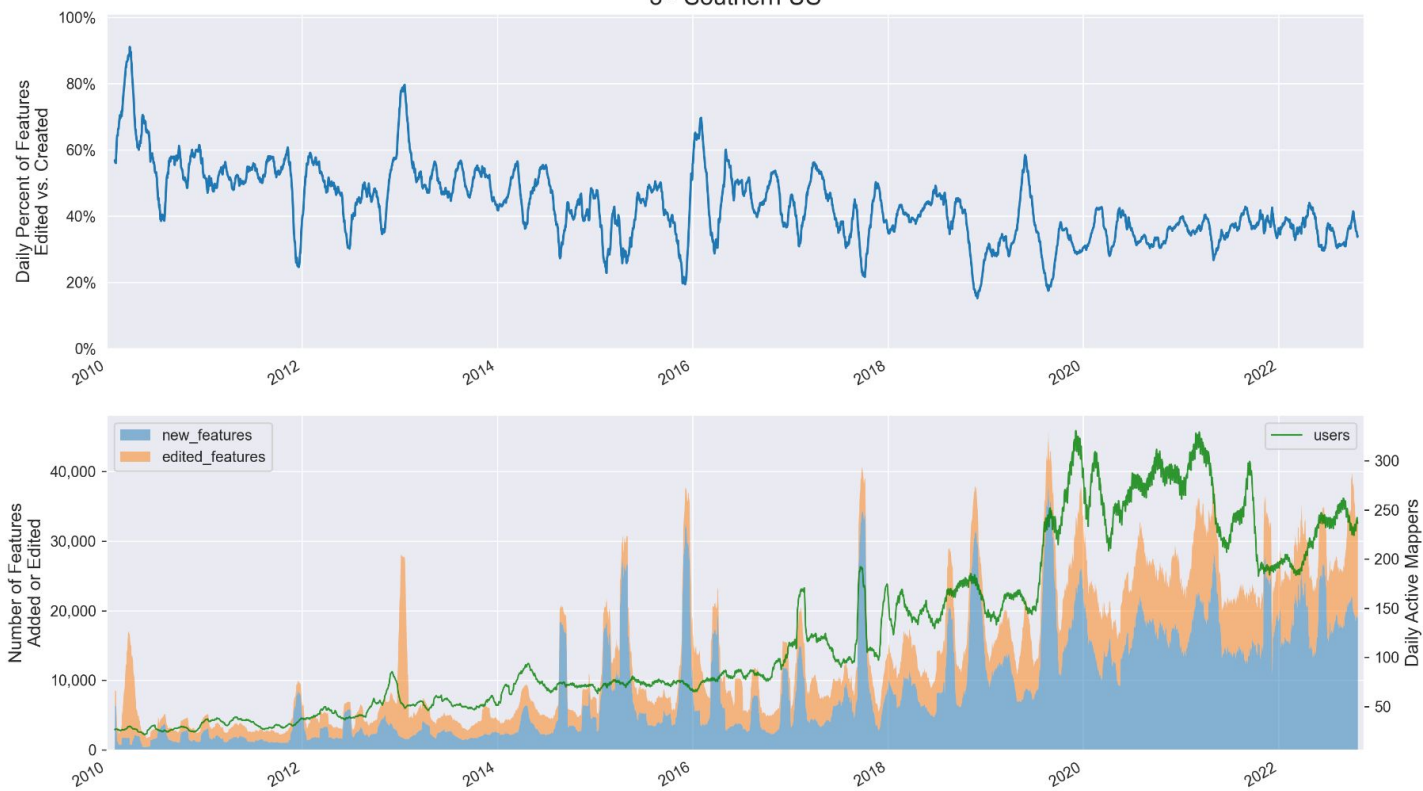
1 - Northeast US



## 2 - Midwest US



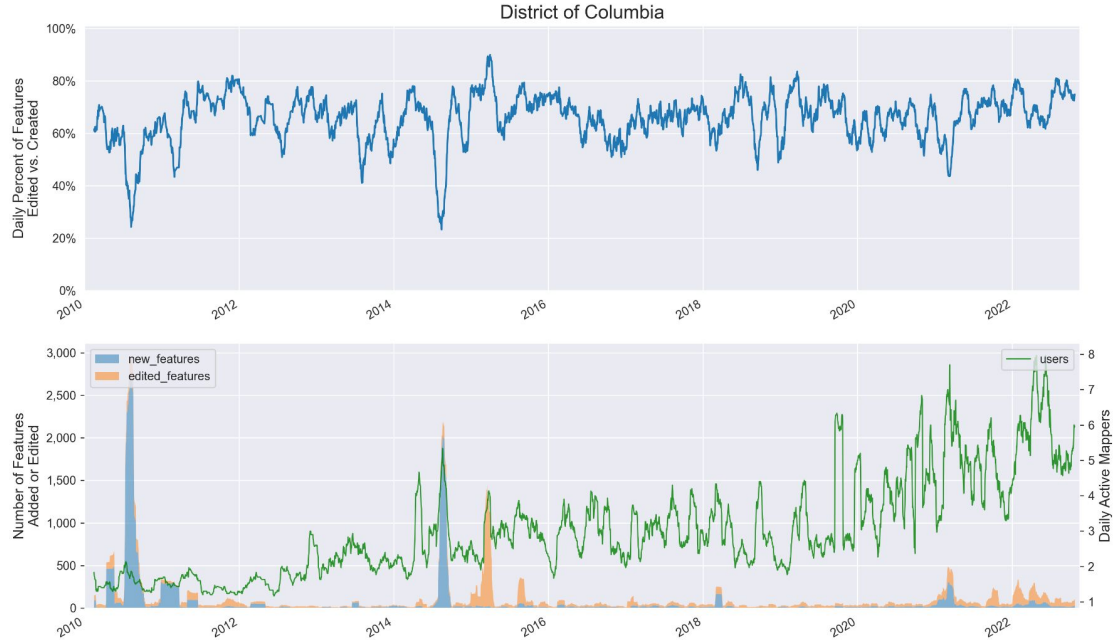
3 - Southern US



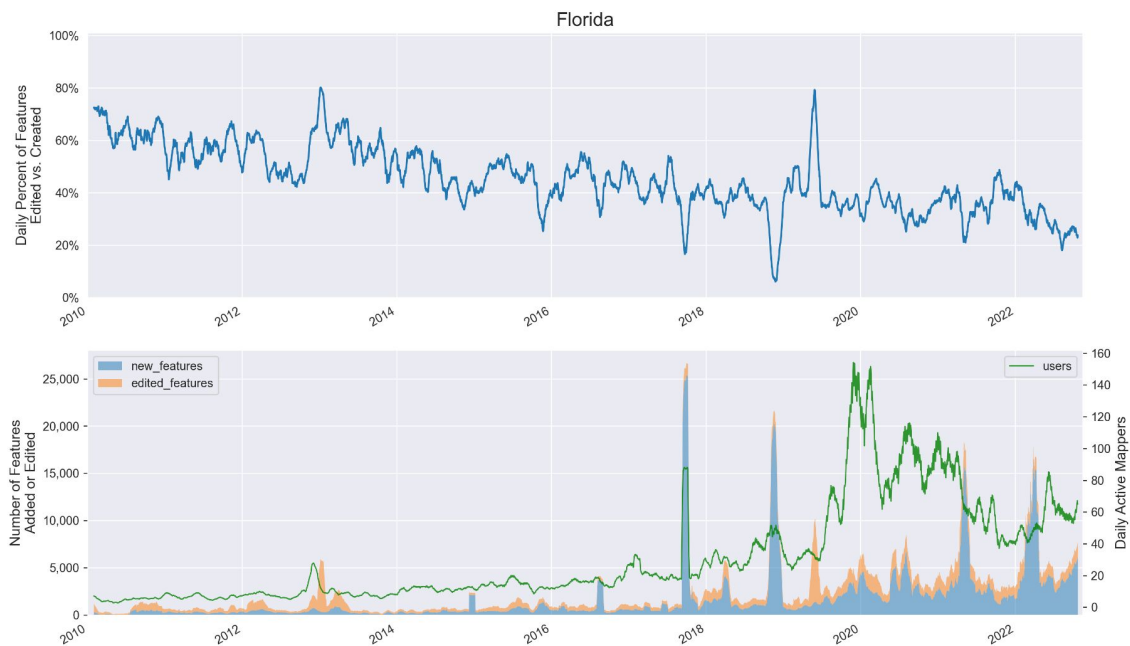
4 - Western US (Including AK)



# Maintenance Phase: Washington, D.C.



# Growth Phase: Florida

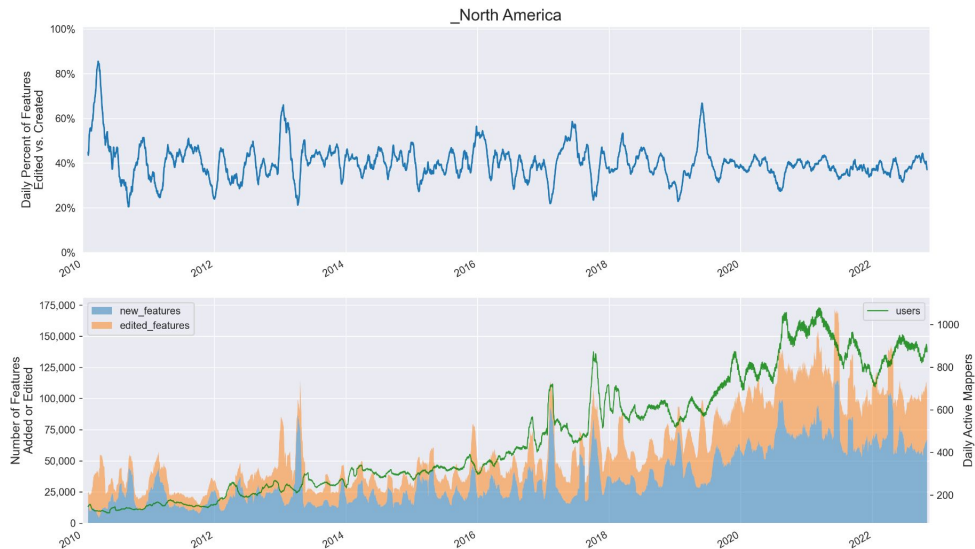


# Takeaways

Overall, we are a healthy blend of data contributors and data editors.

We saw our biggest spike in daily active mappers start to pick up in 2020, but has leveled out in 2022 — around 900 mappers each day.

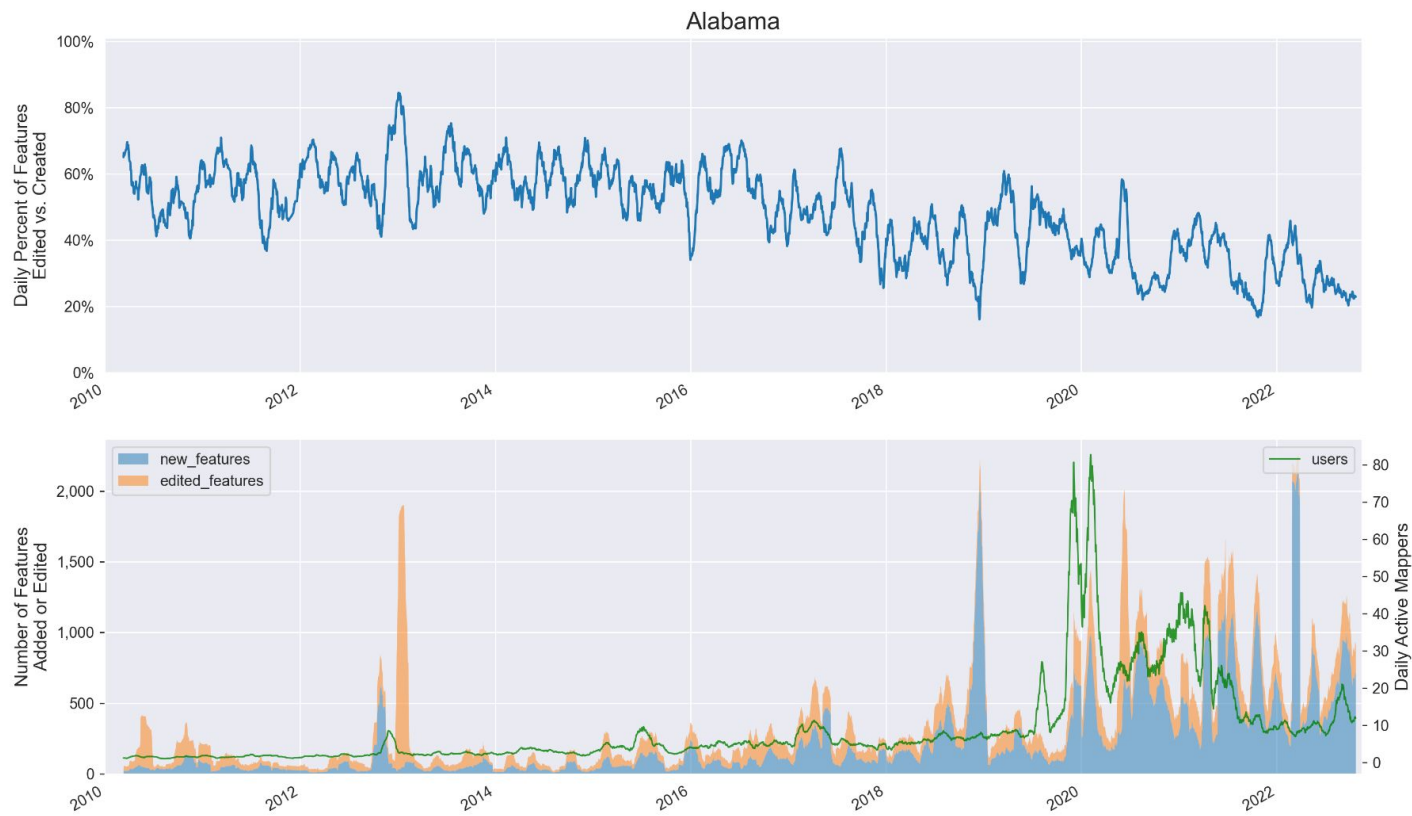
Hovering around 40% edited and 60% created data is ... fantastic!



# Appendix – All U.S. States / Territories

View all of these slides!

<https://tinyurl.com/mapping-usa-states>

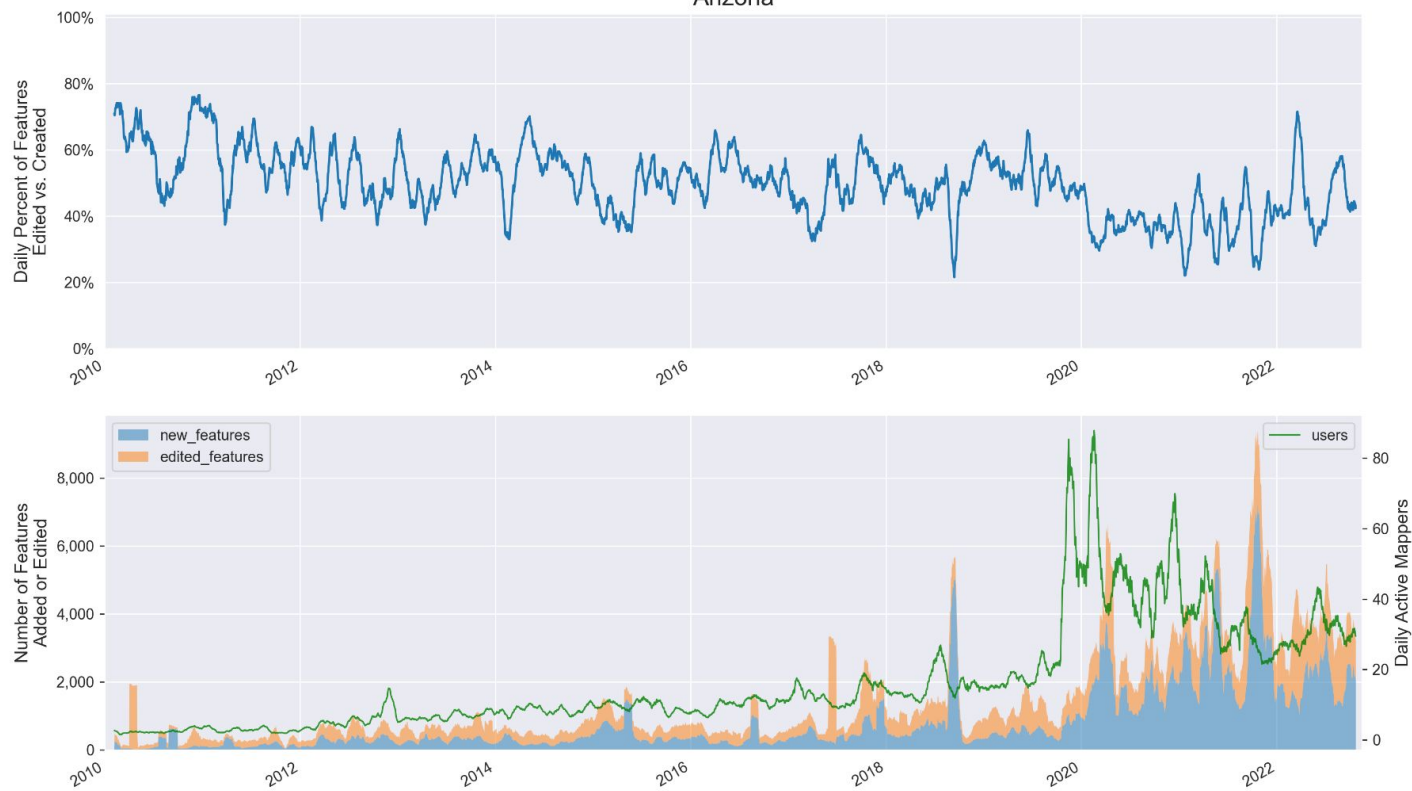


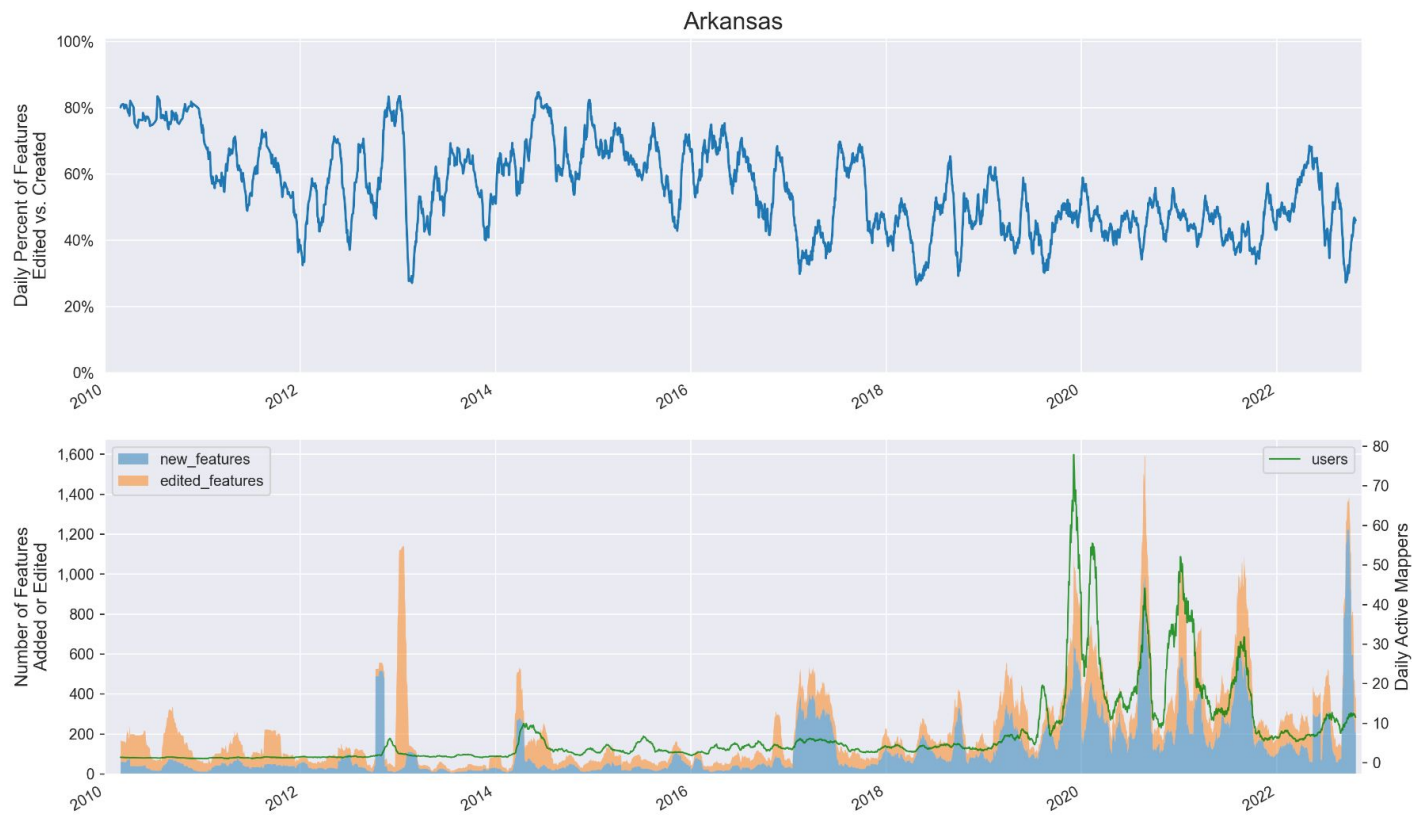


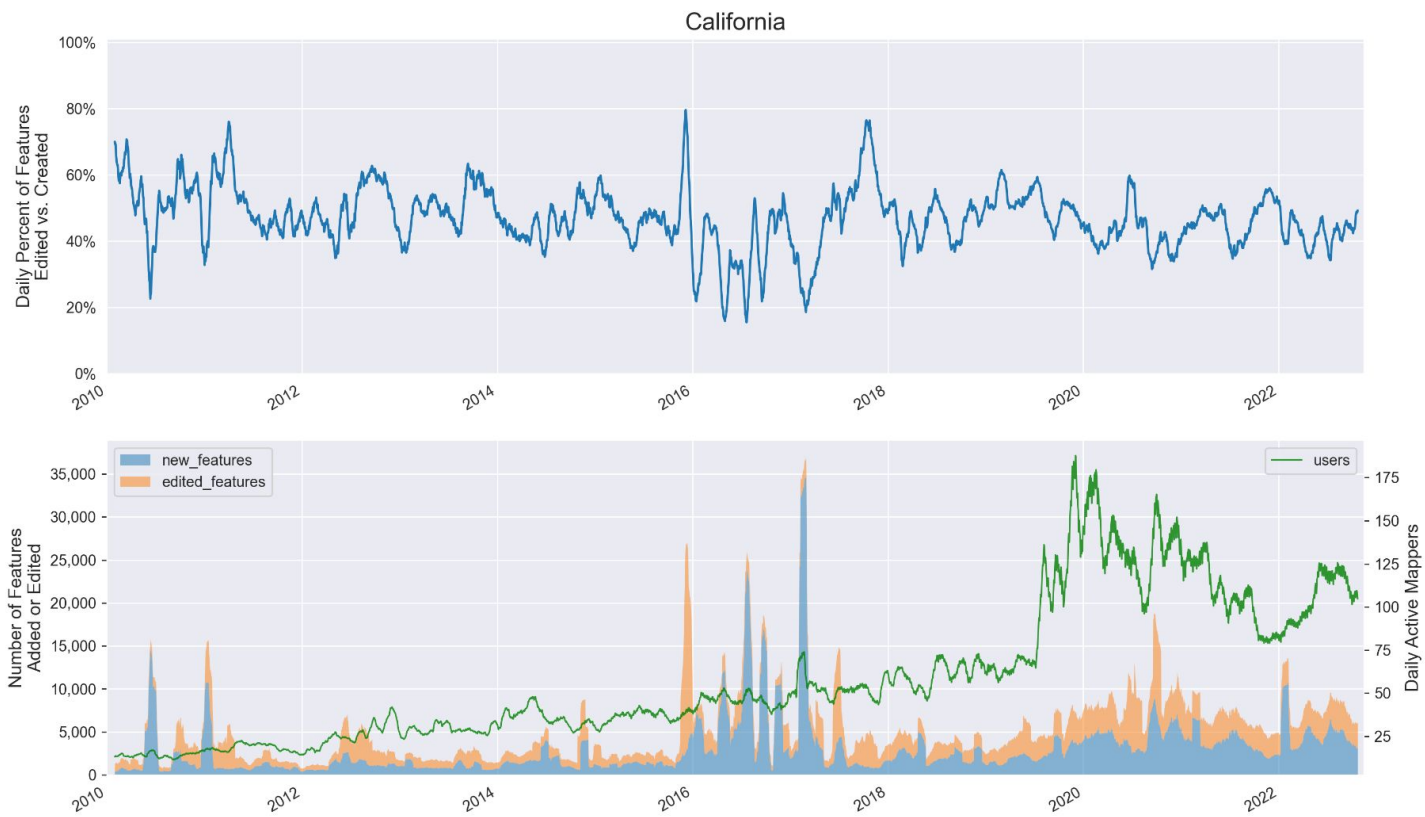
## American Samoa

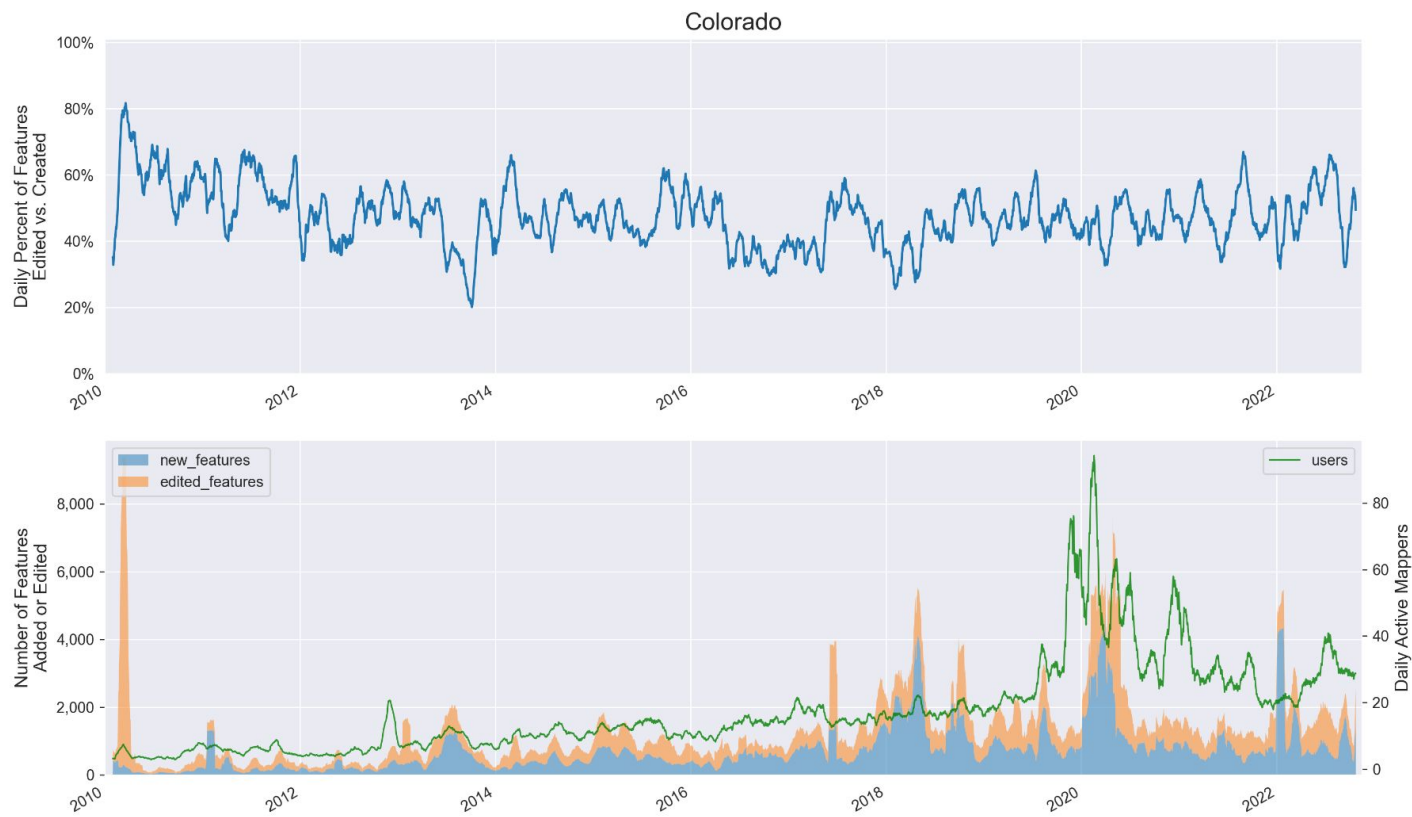


## Arizona





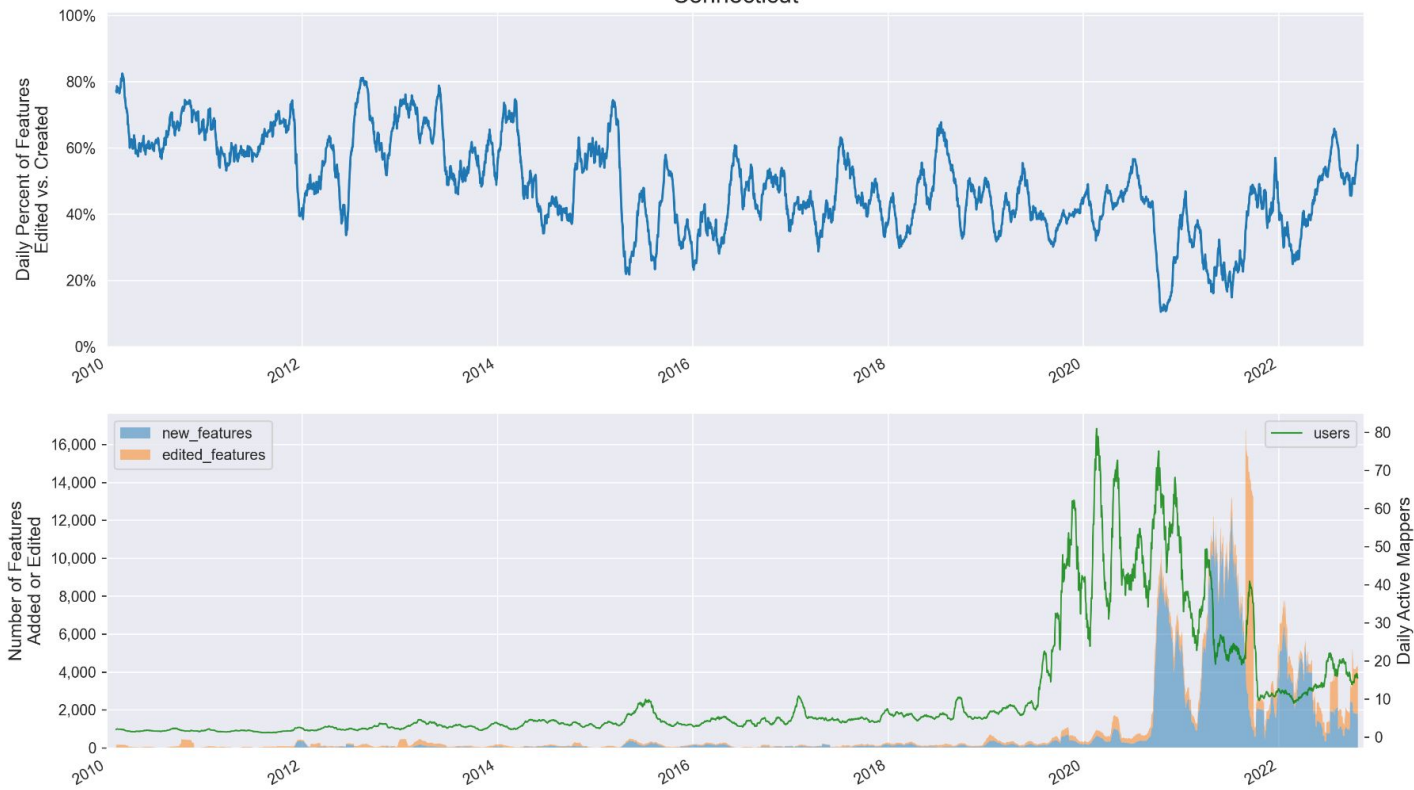


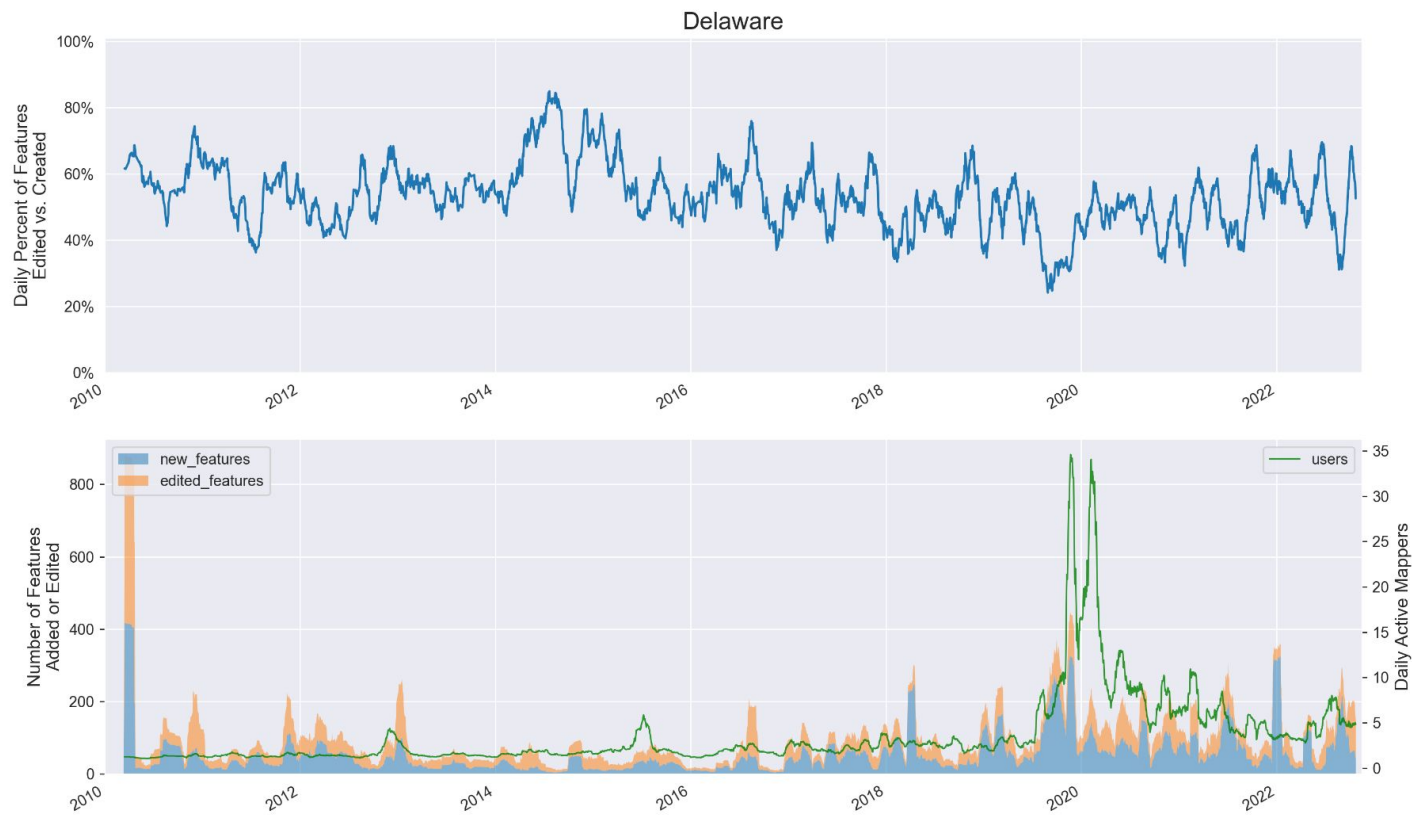


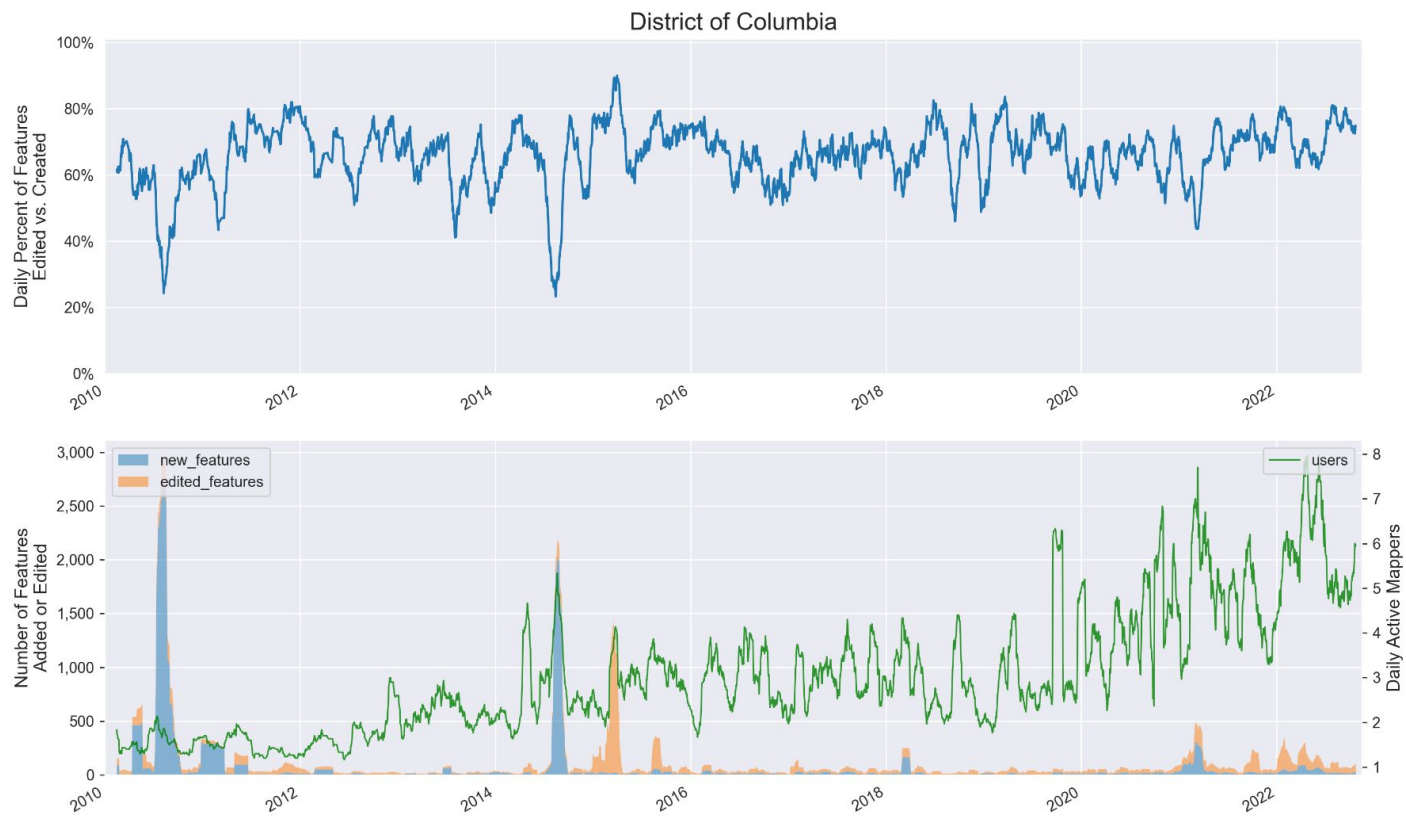
## Commonwealth of the Northern Mariana Islands



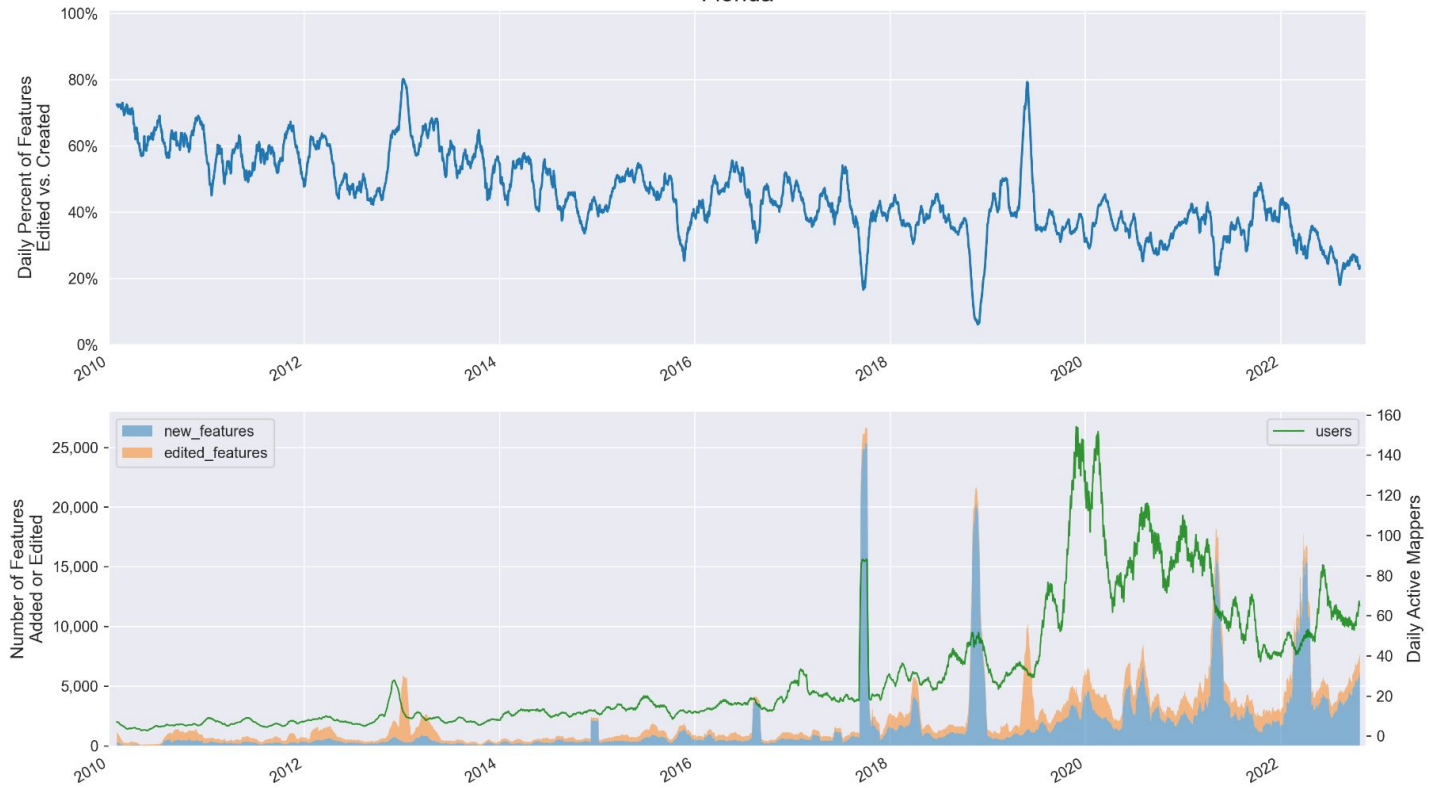
## Connecticut



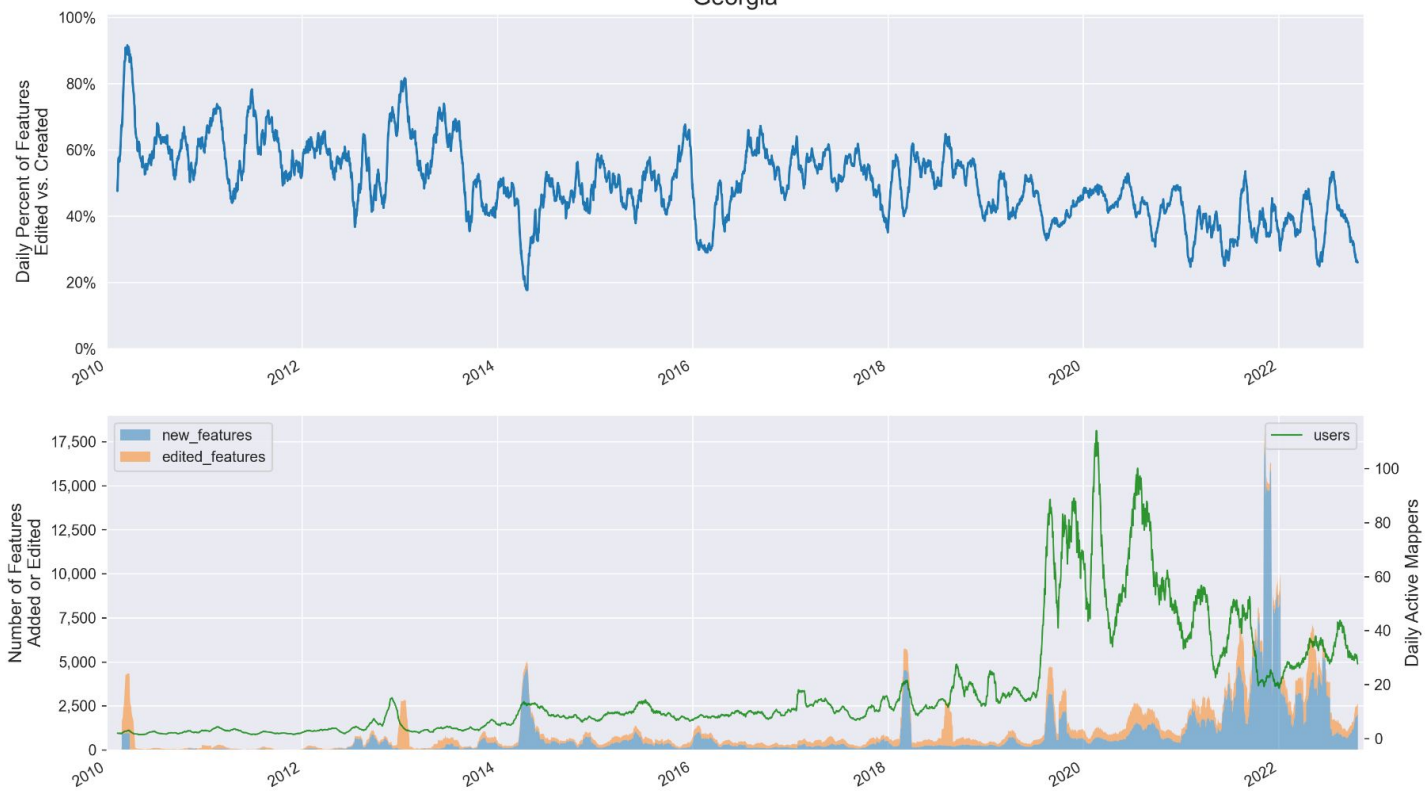


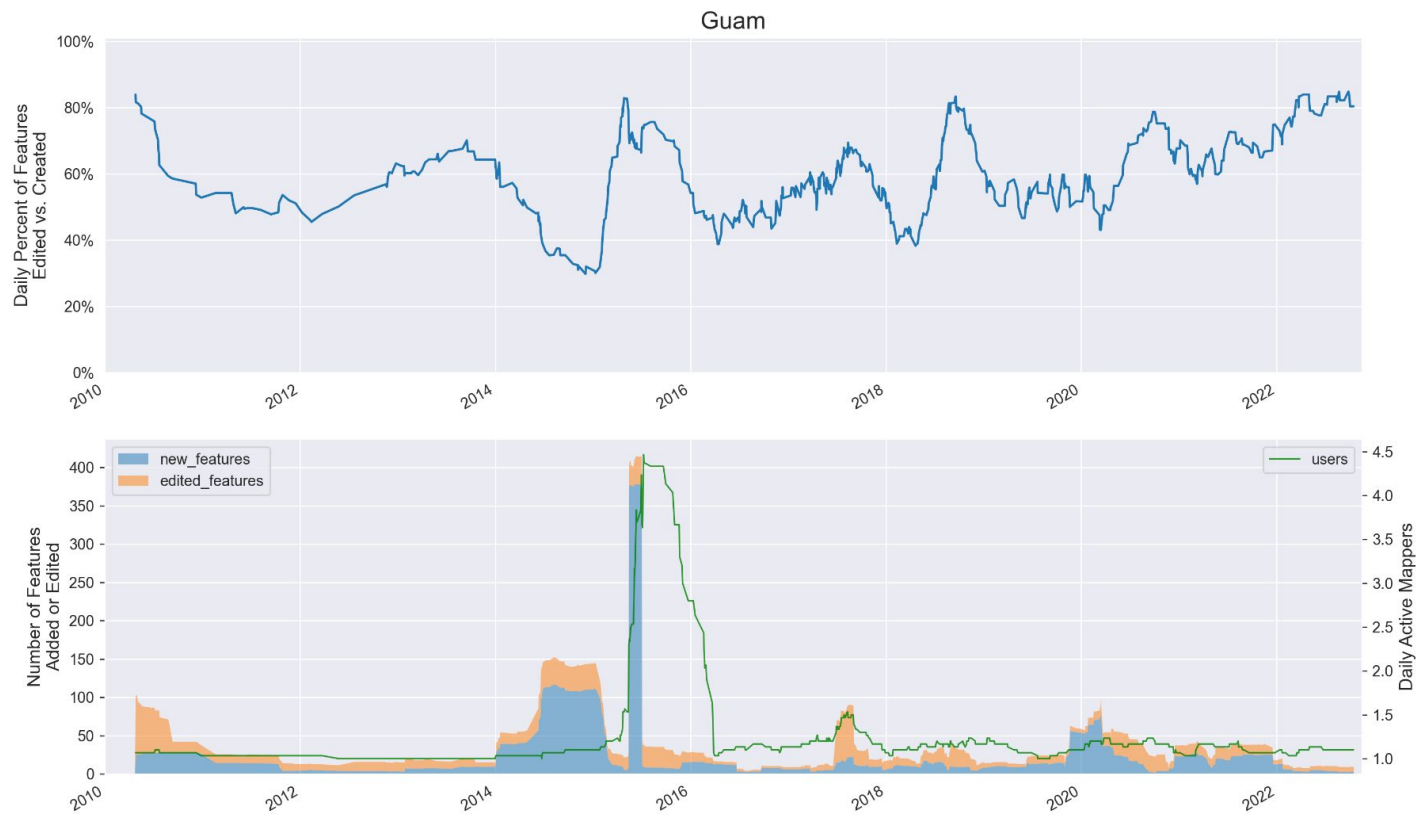


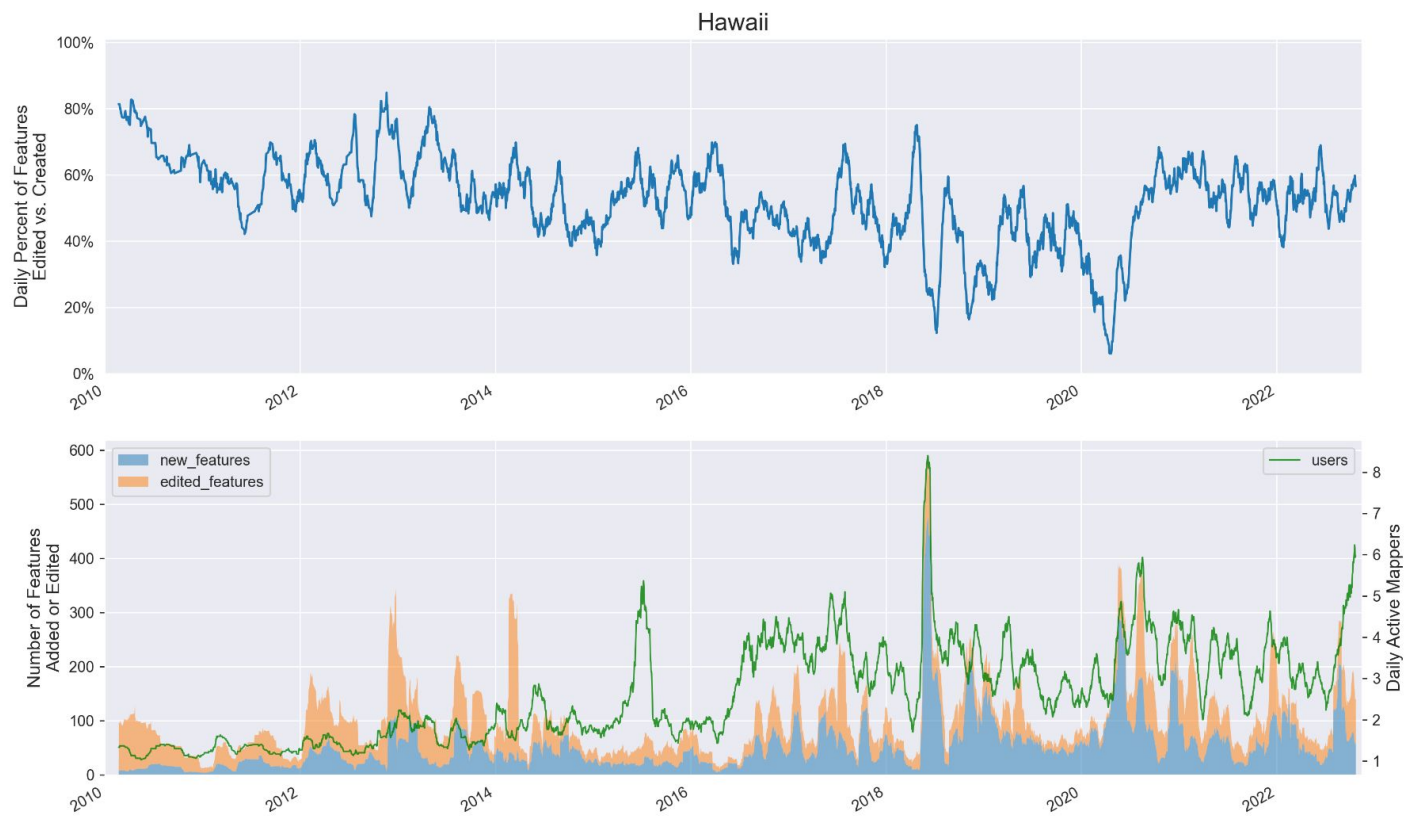
## Florida

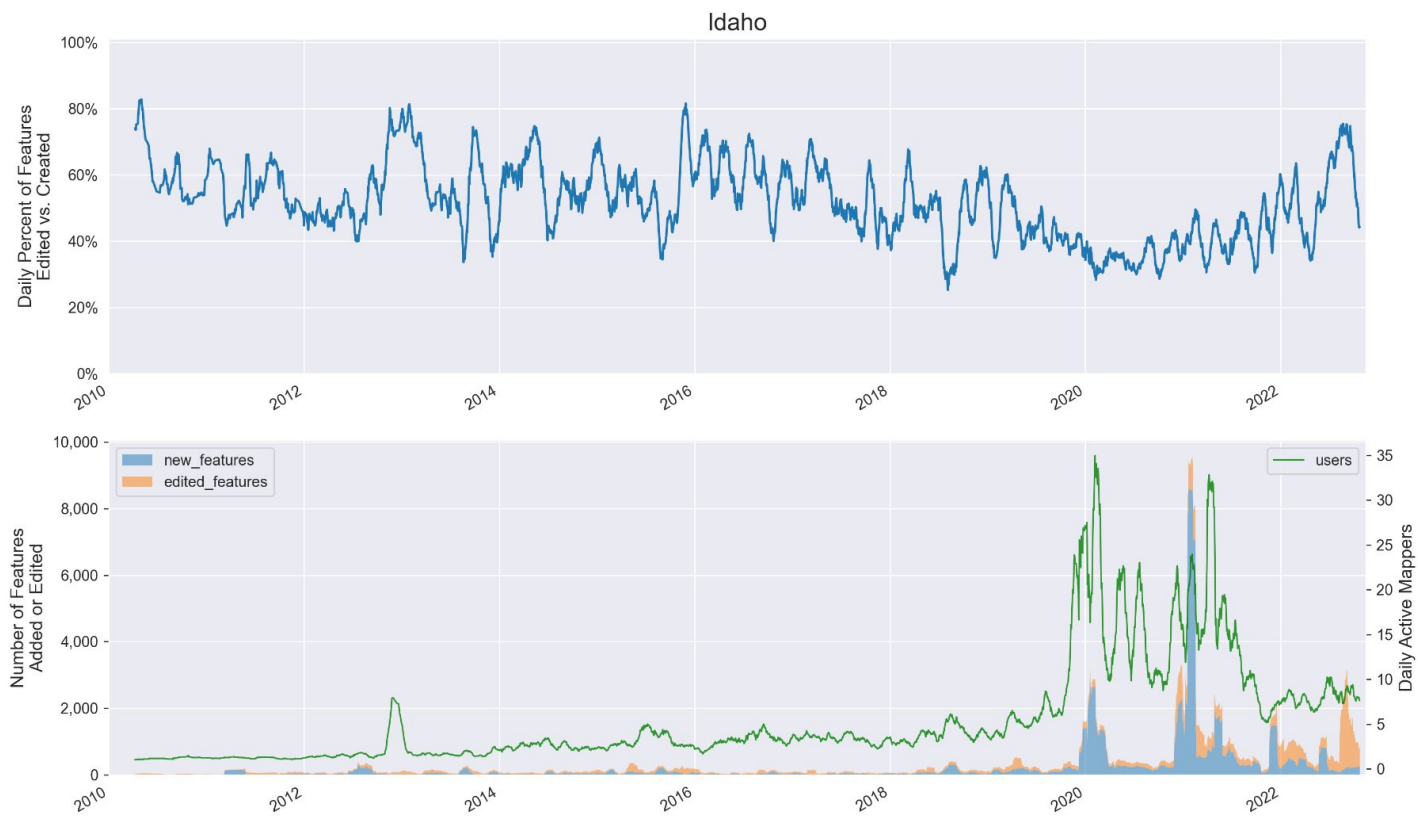


## Georgia

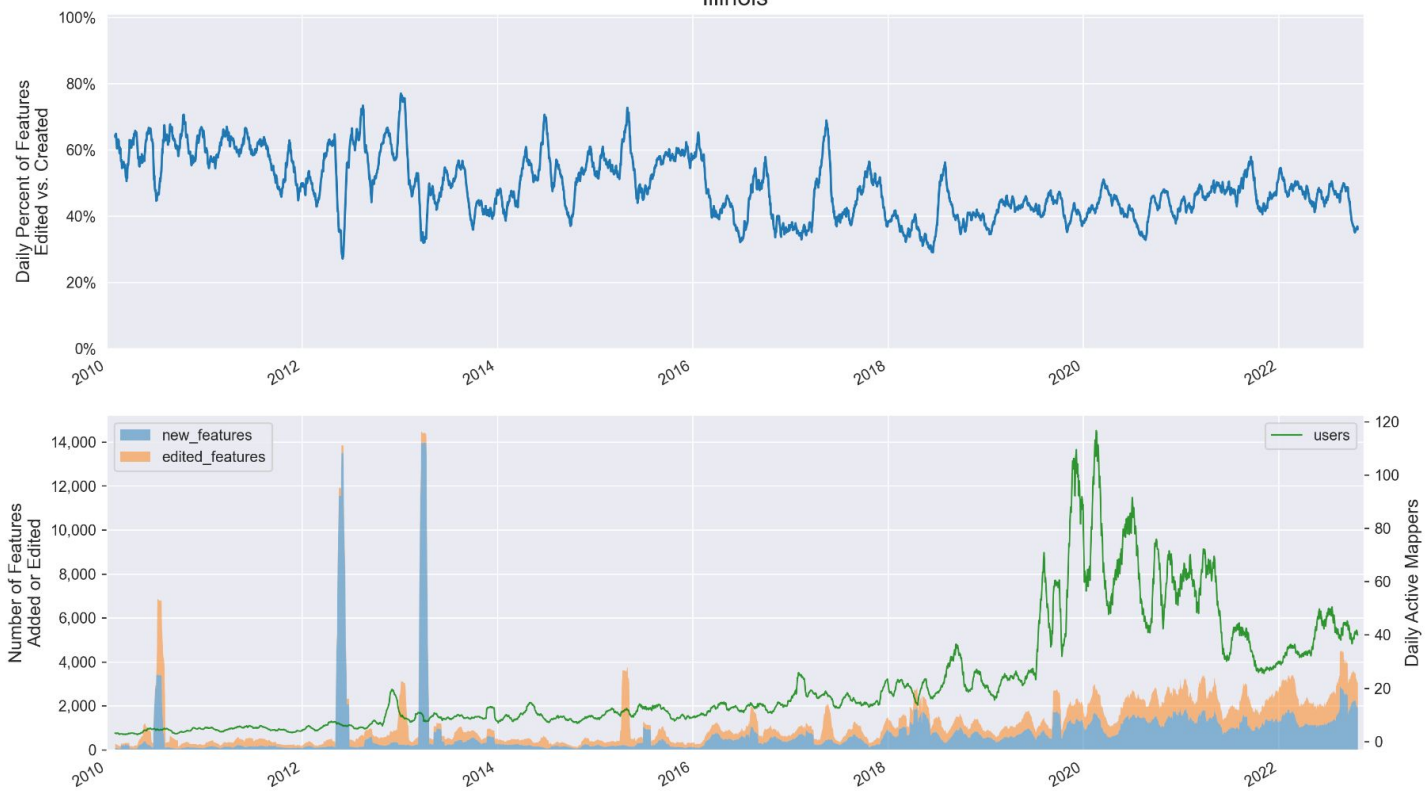


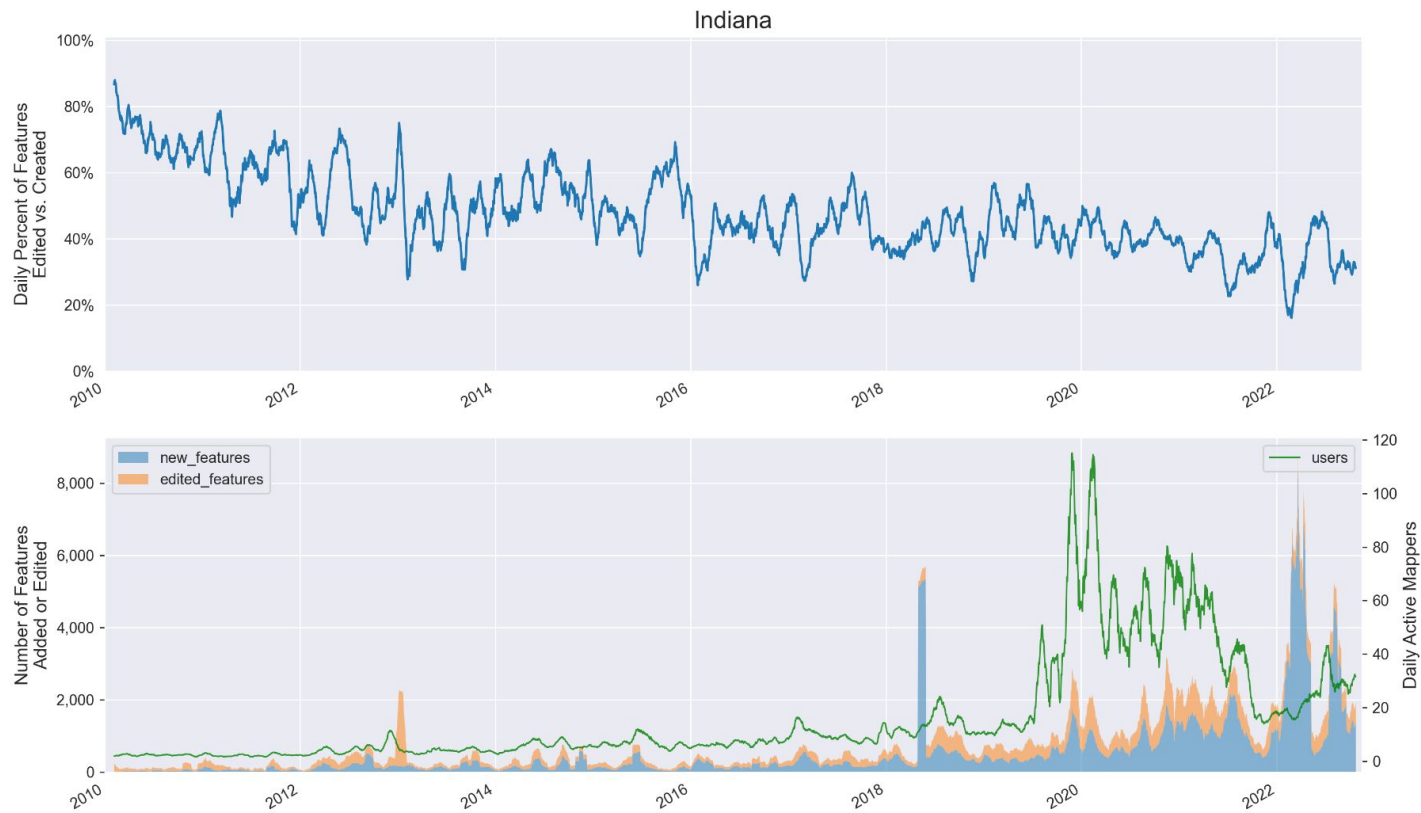




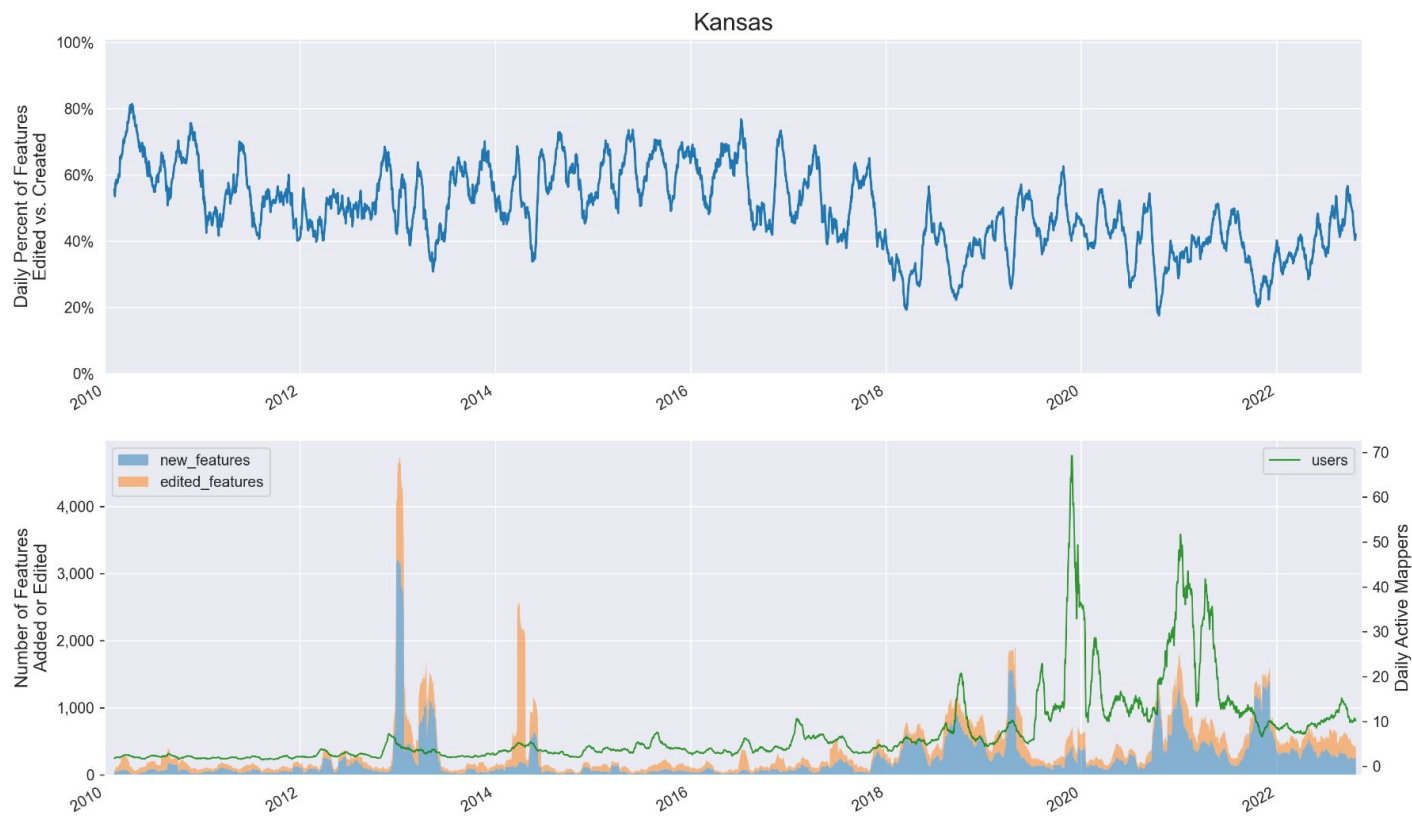


## Illinois

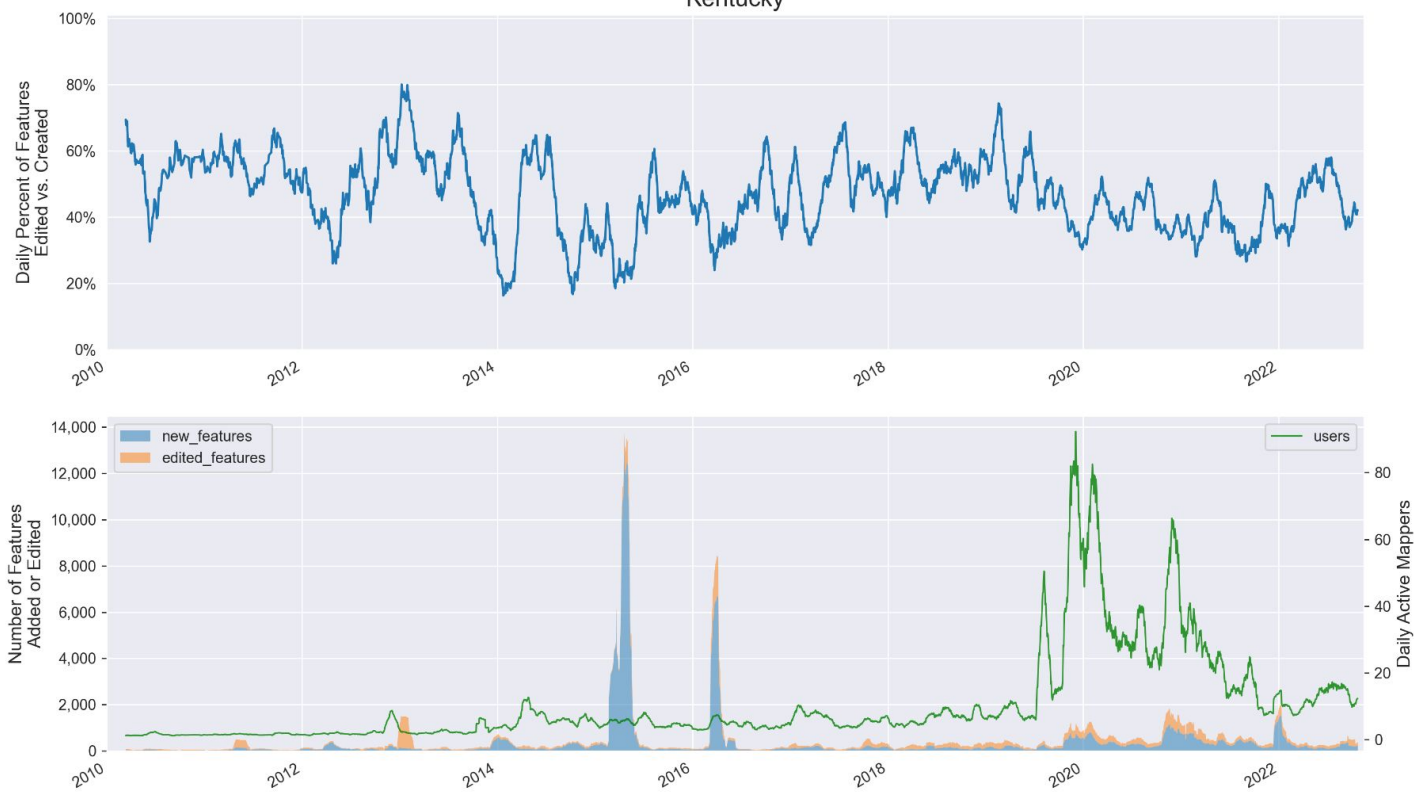


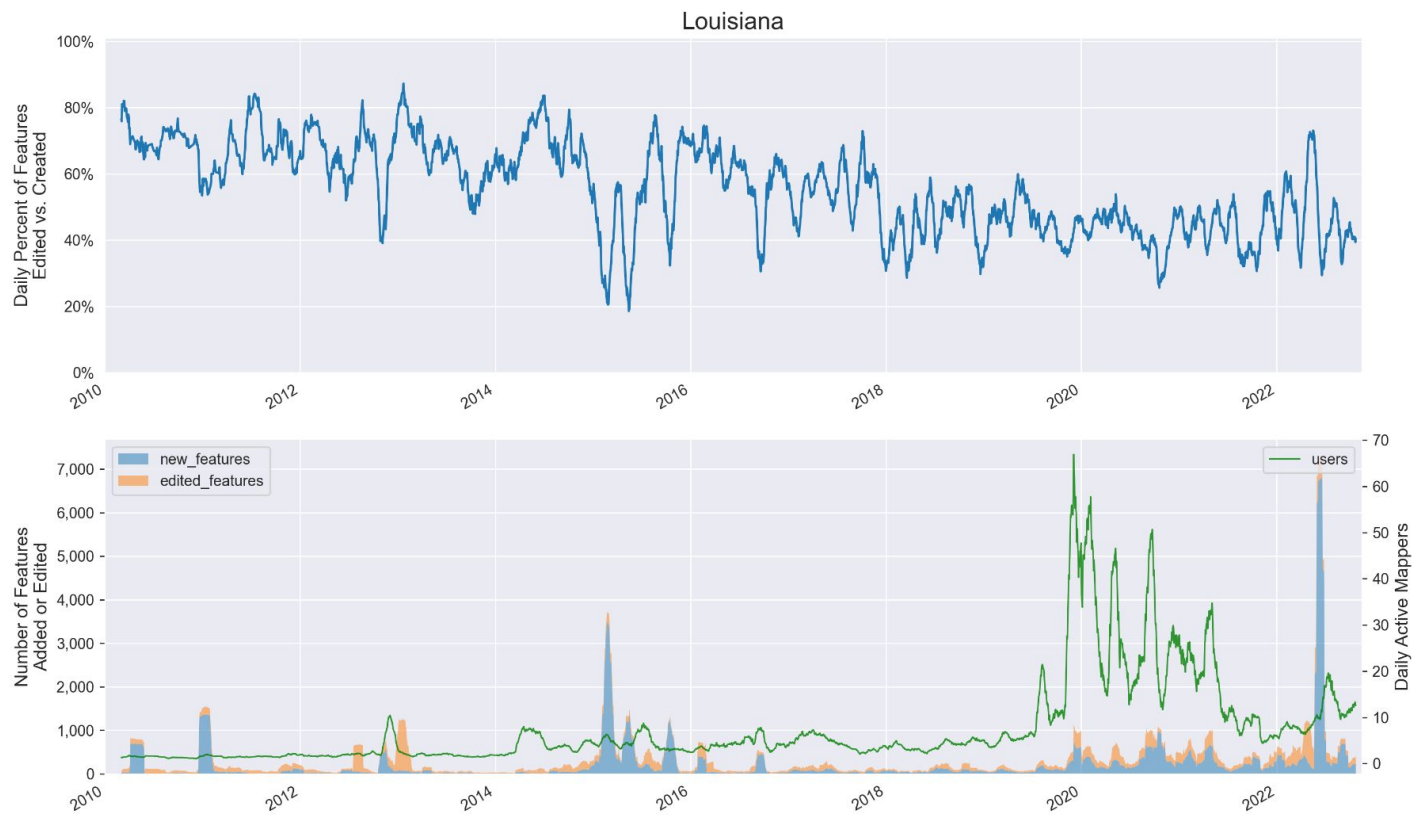




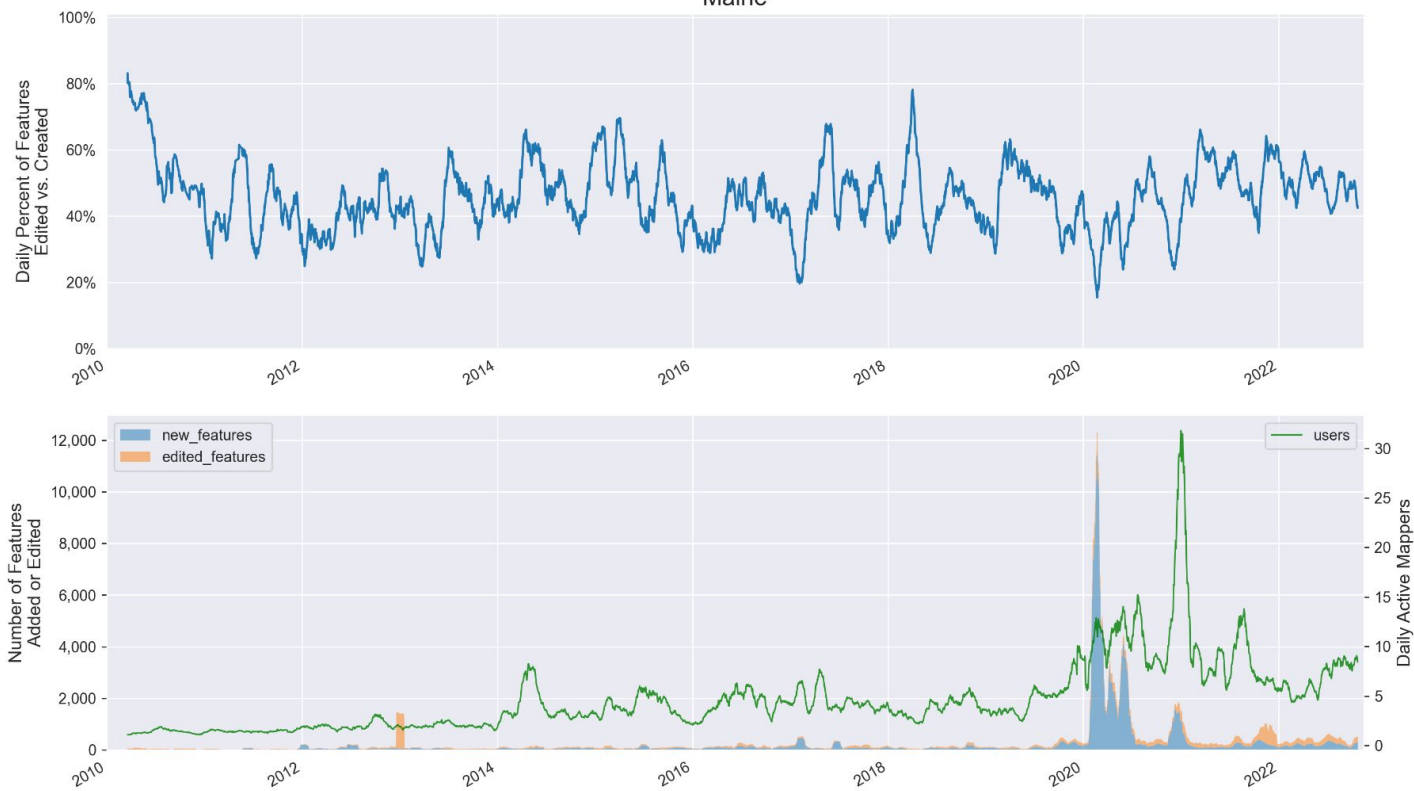


## Kentucky

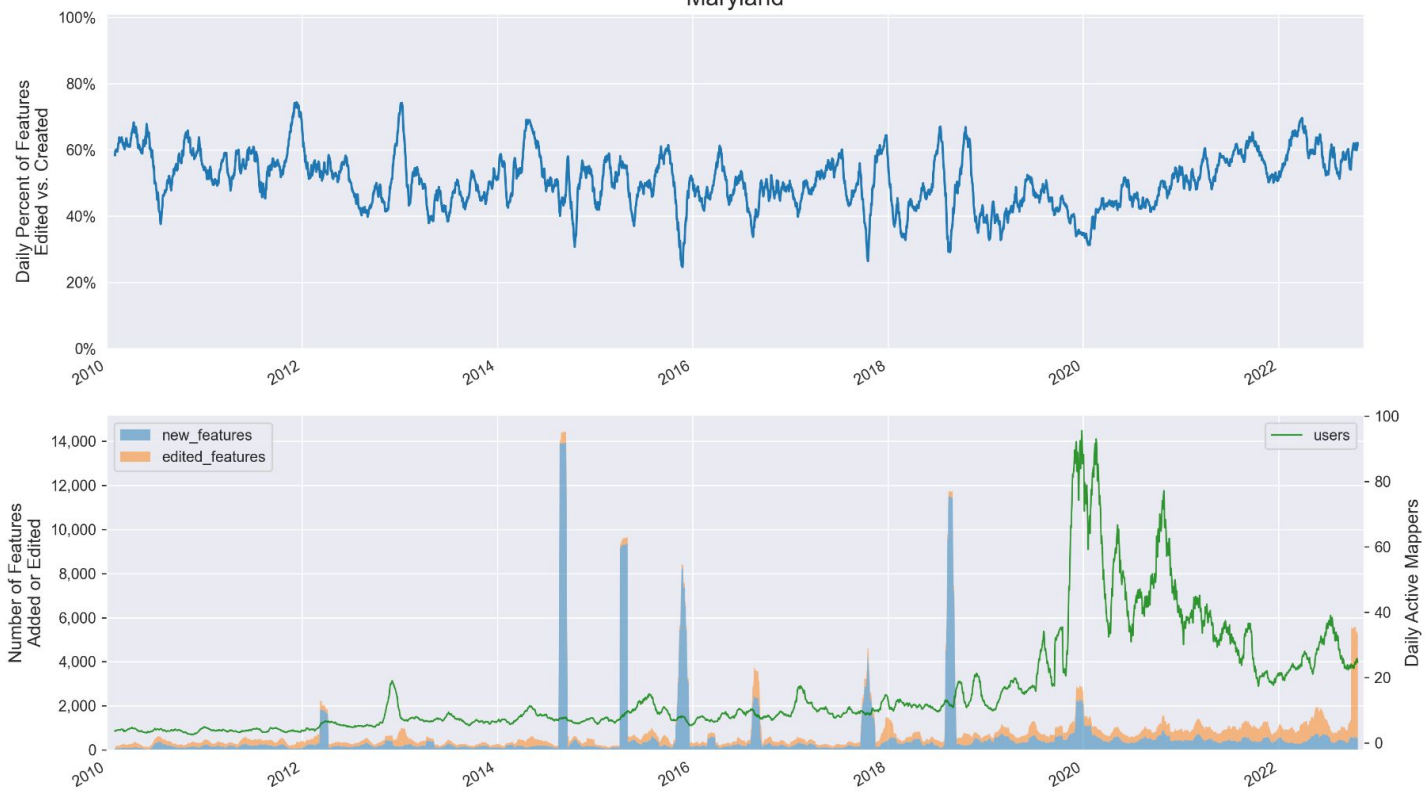


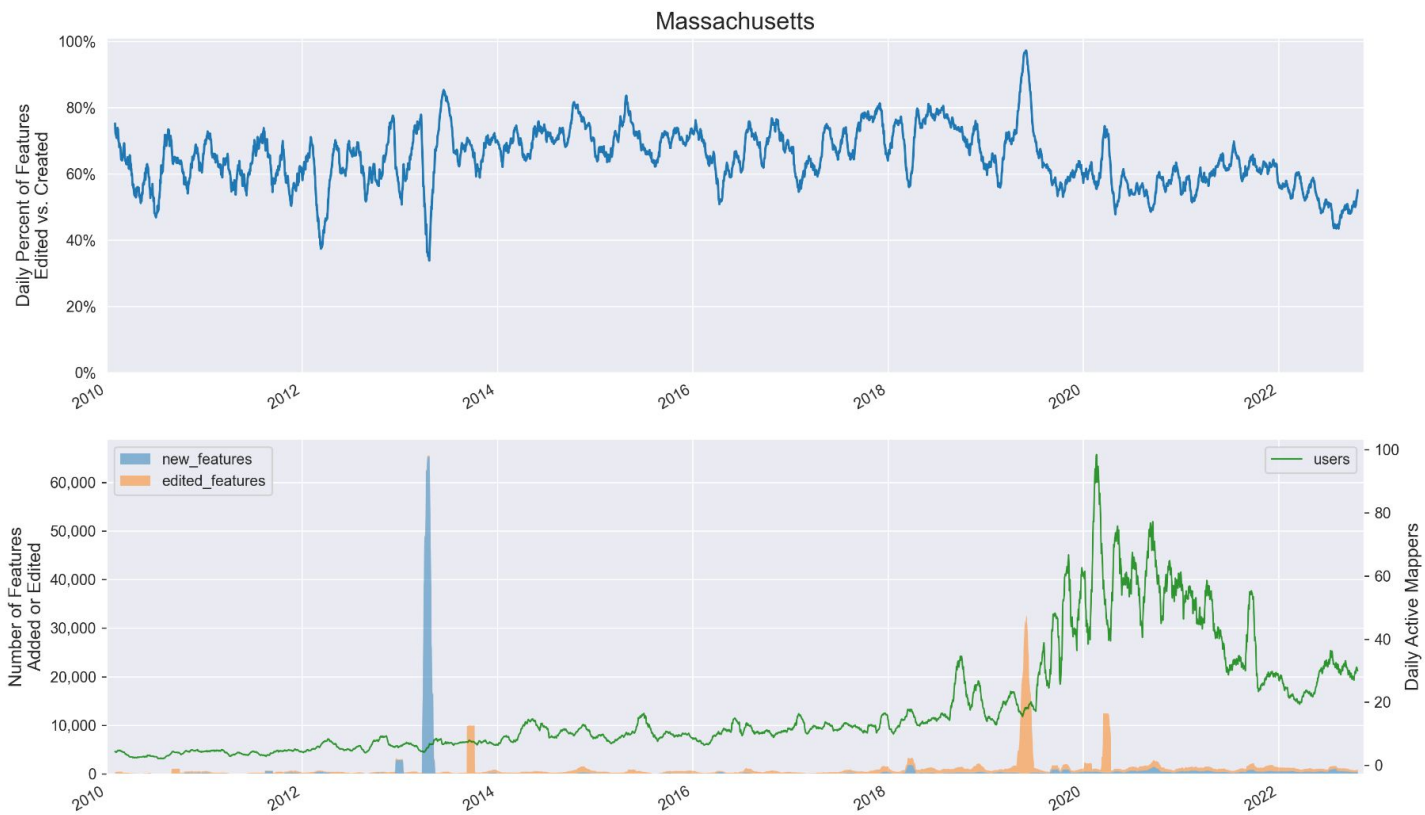


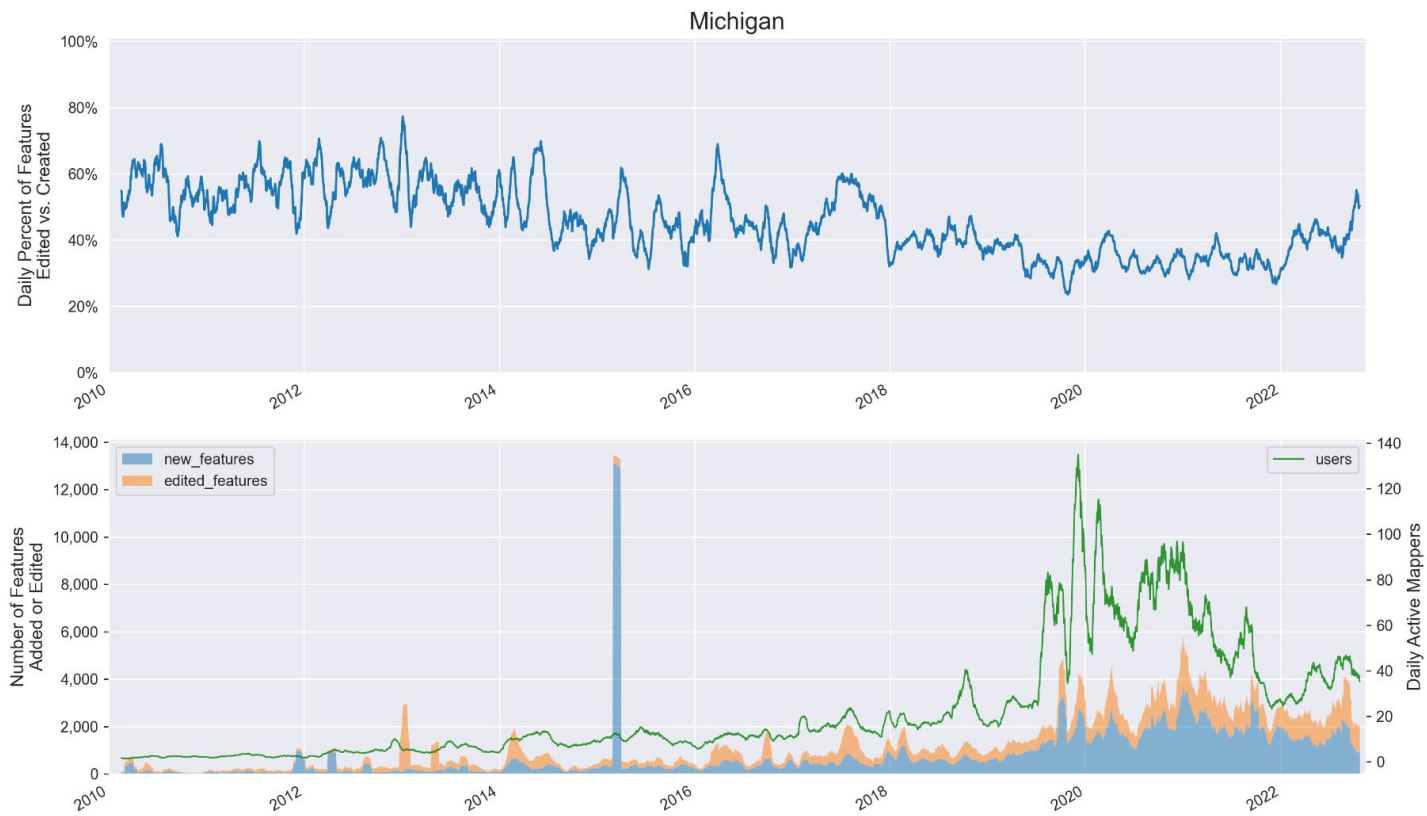
## Maine



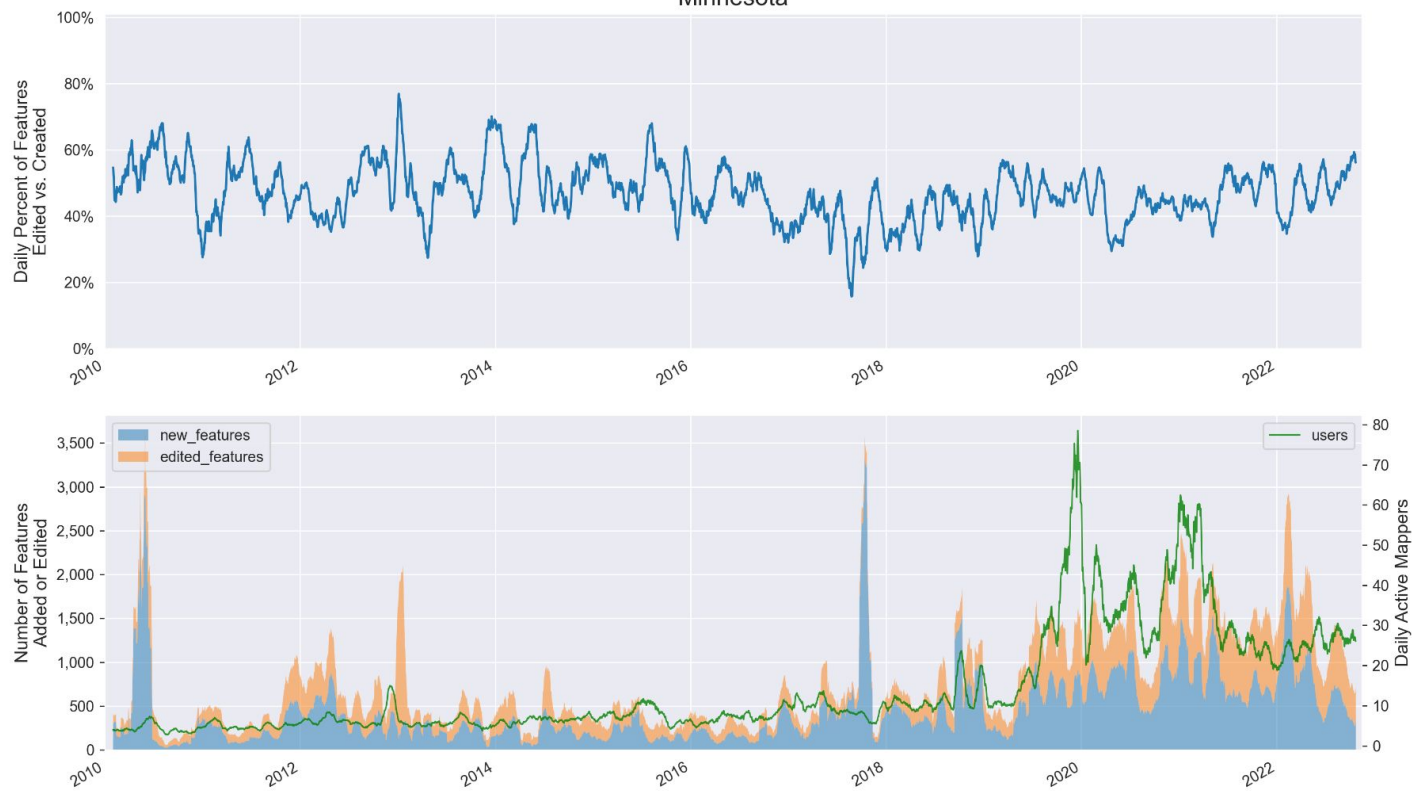
## Maryland



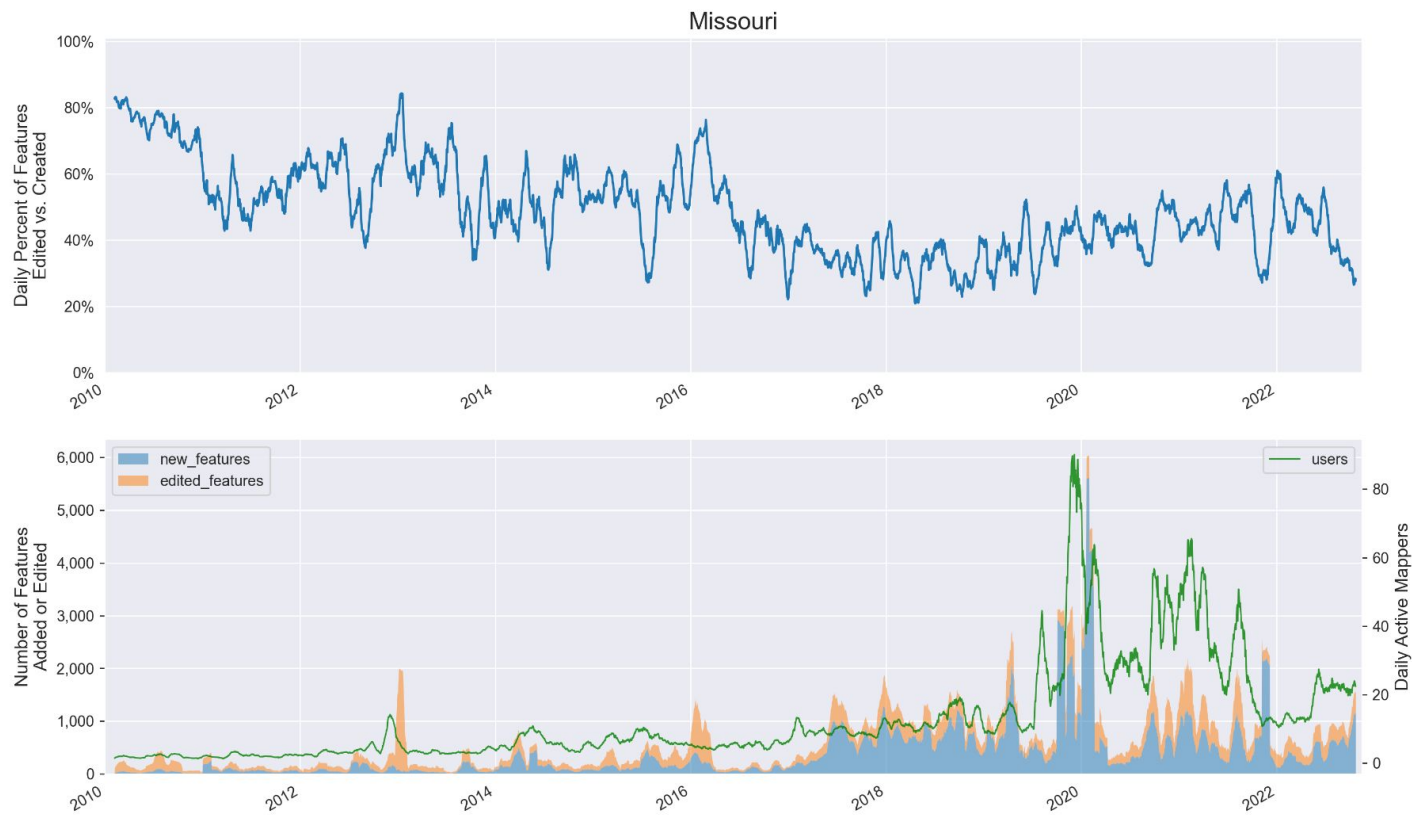


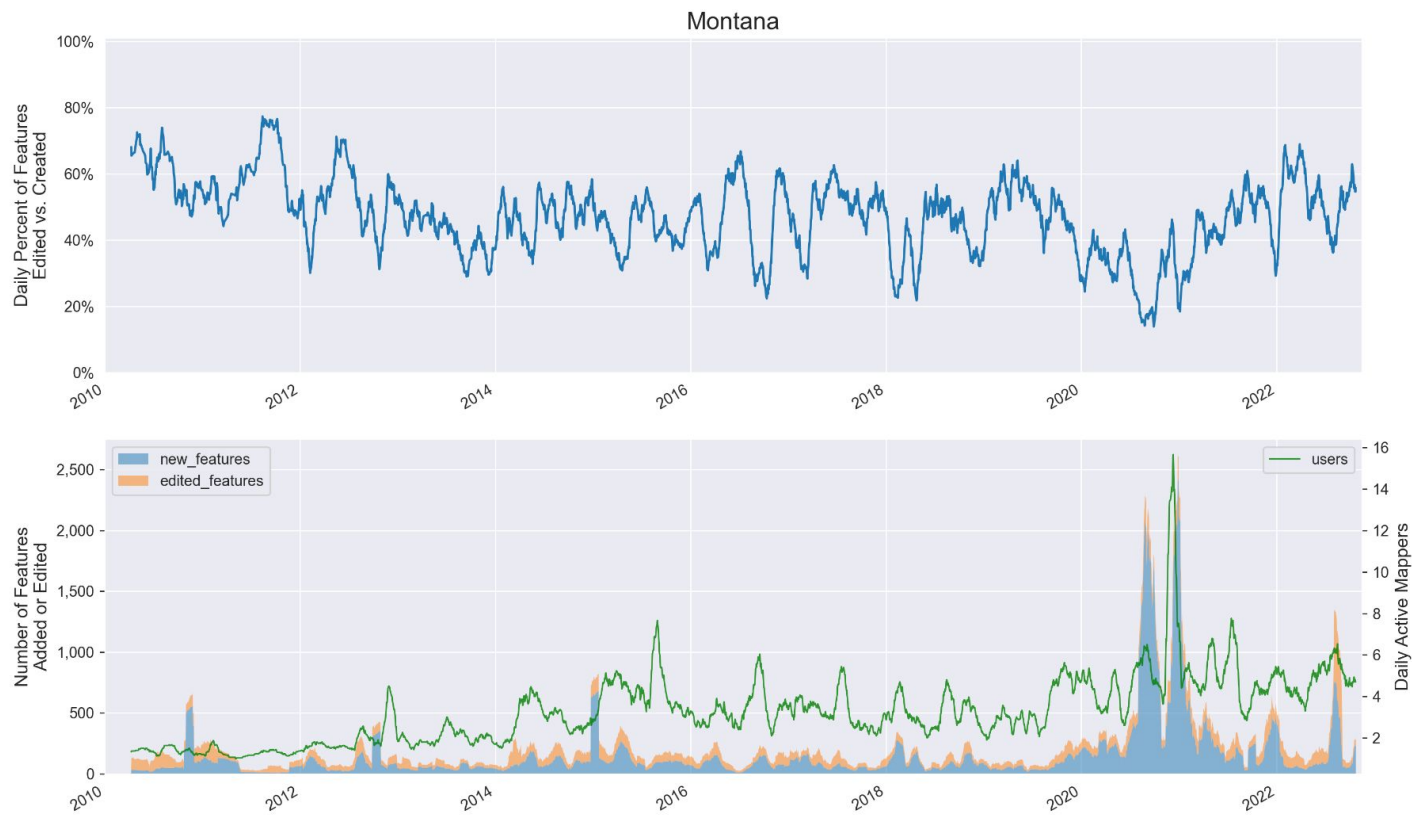


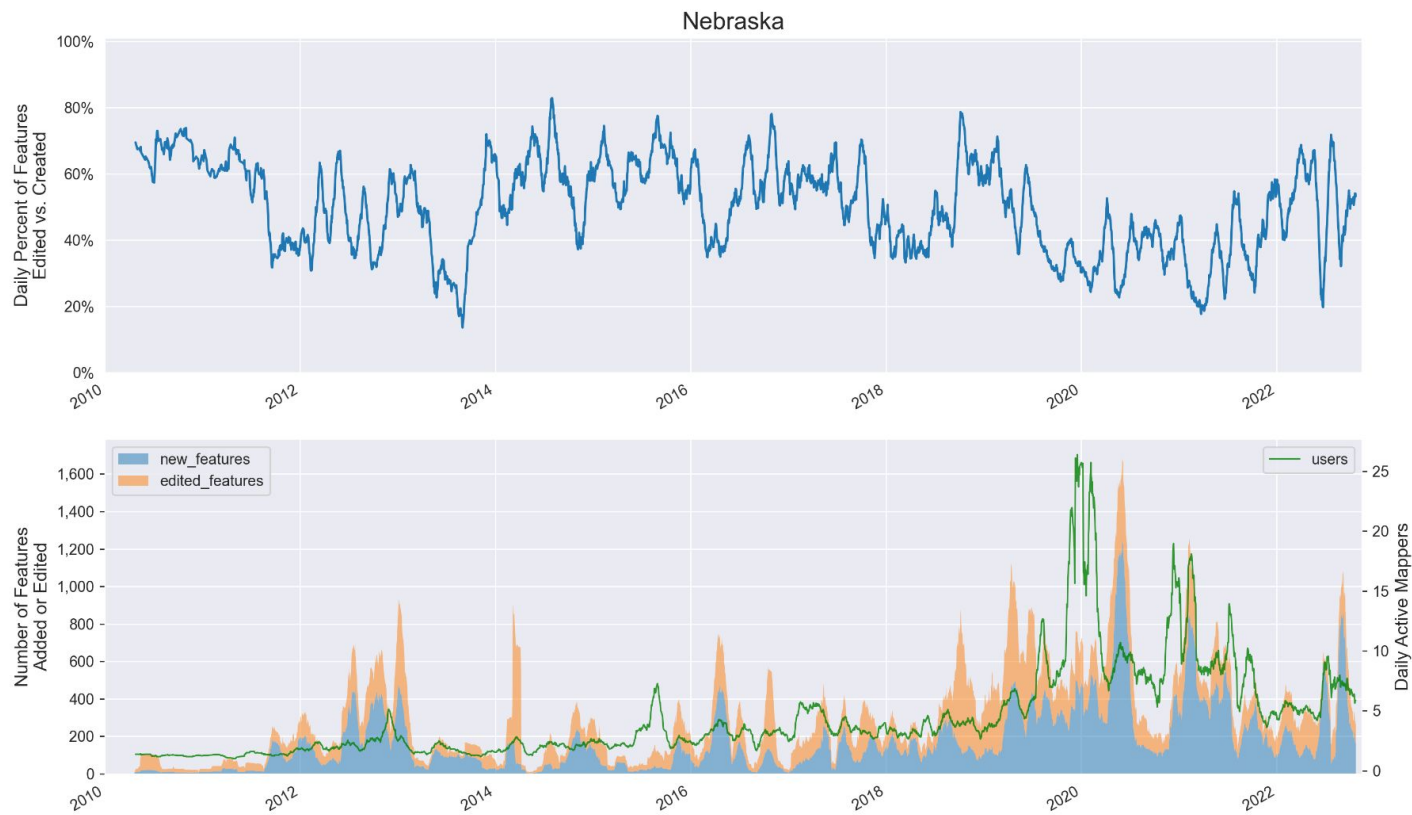
## Minnesota

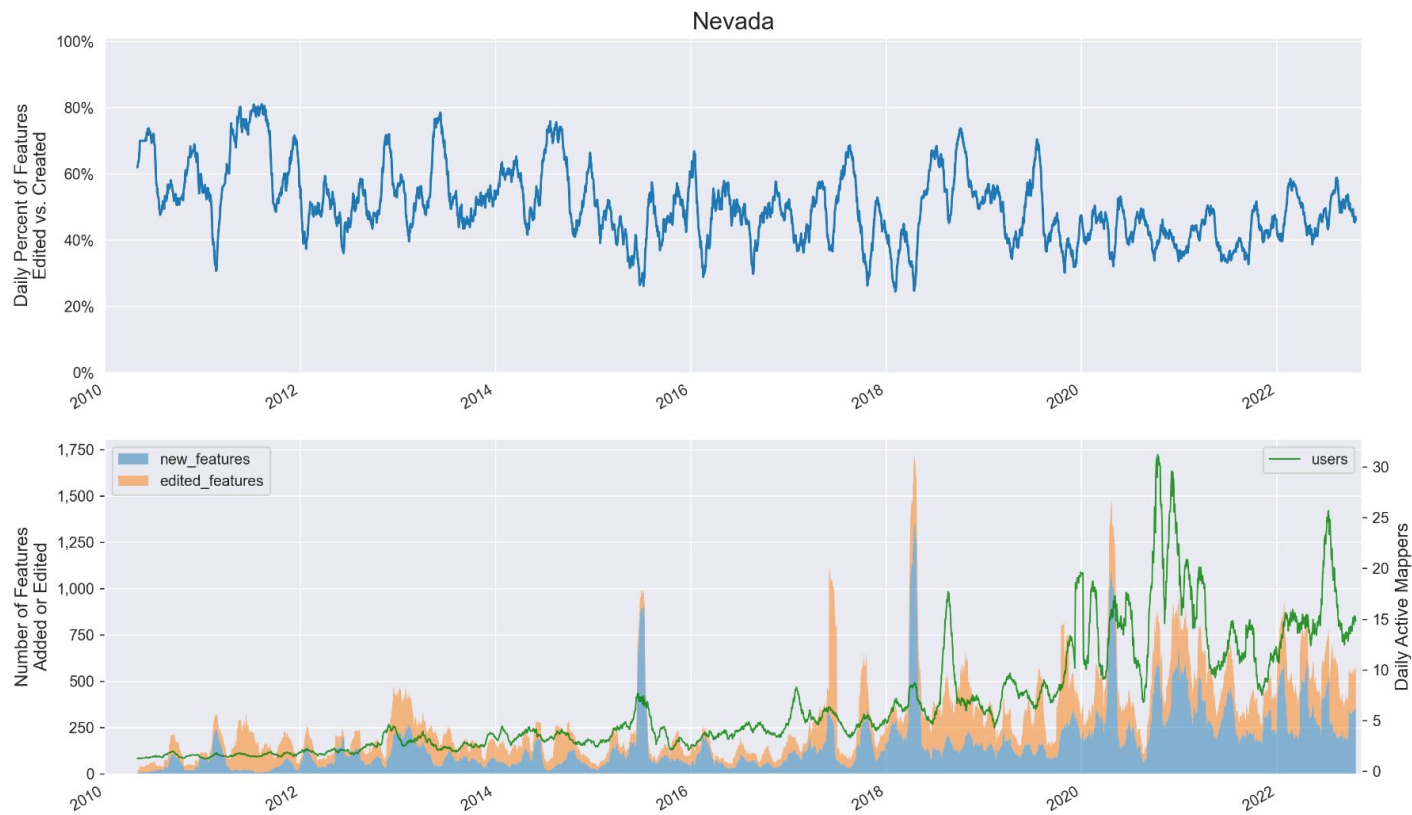


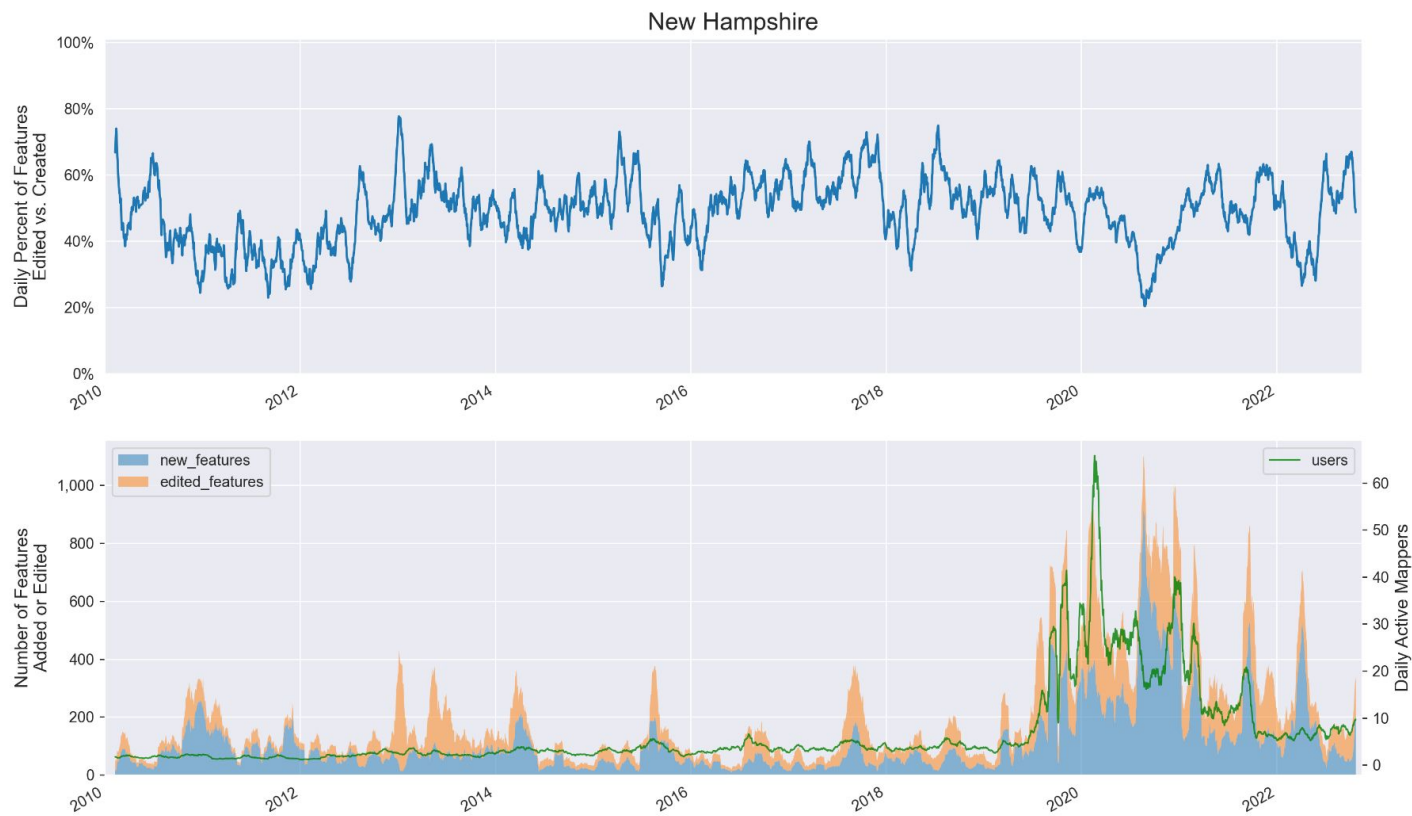


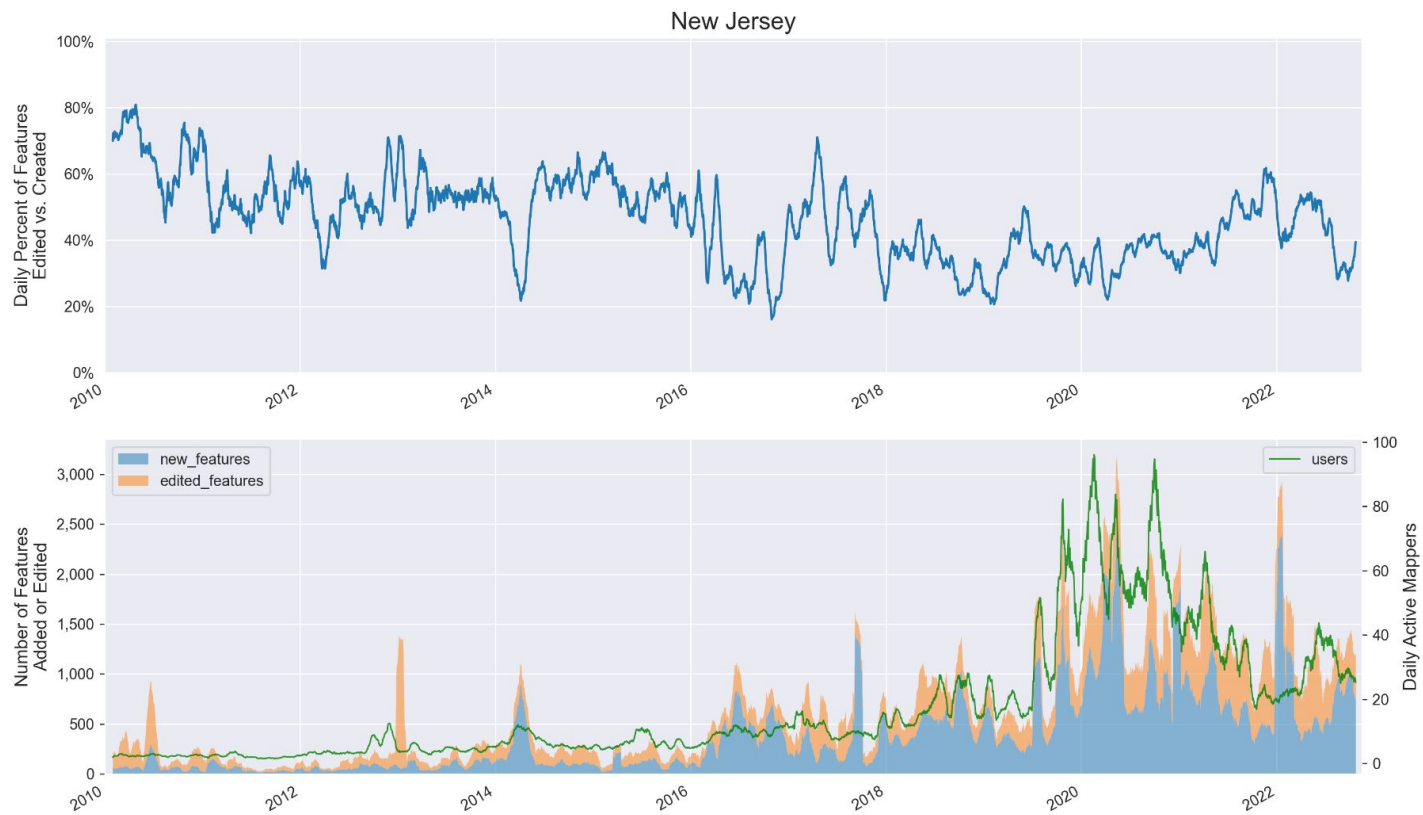




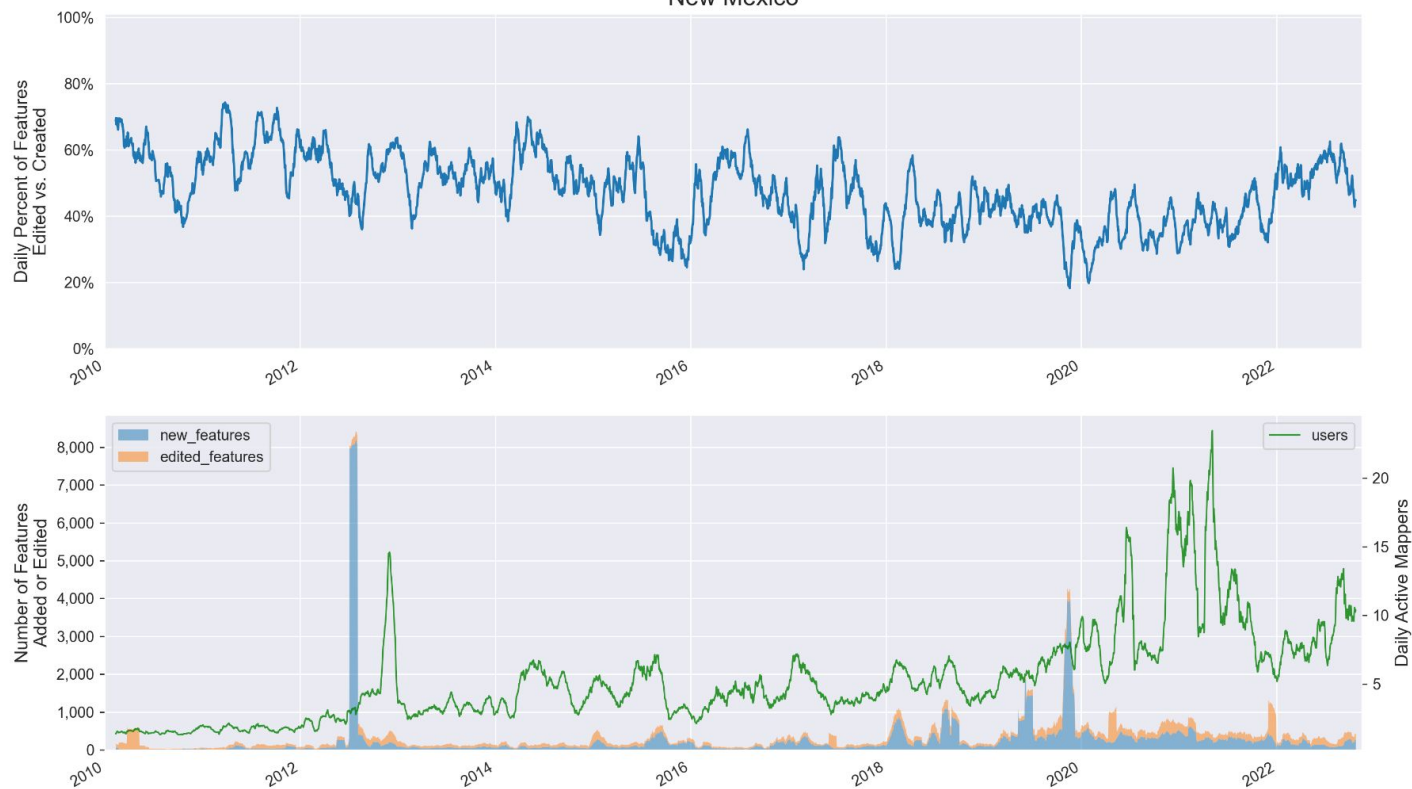


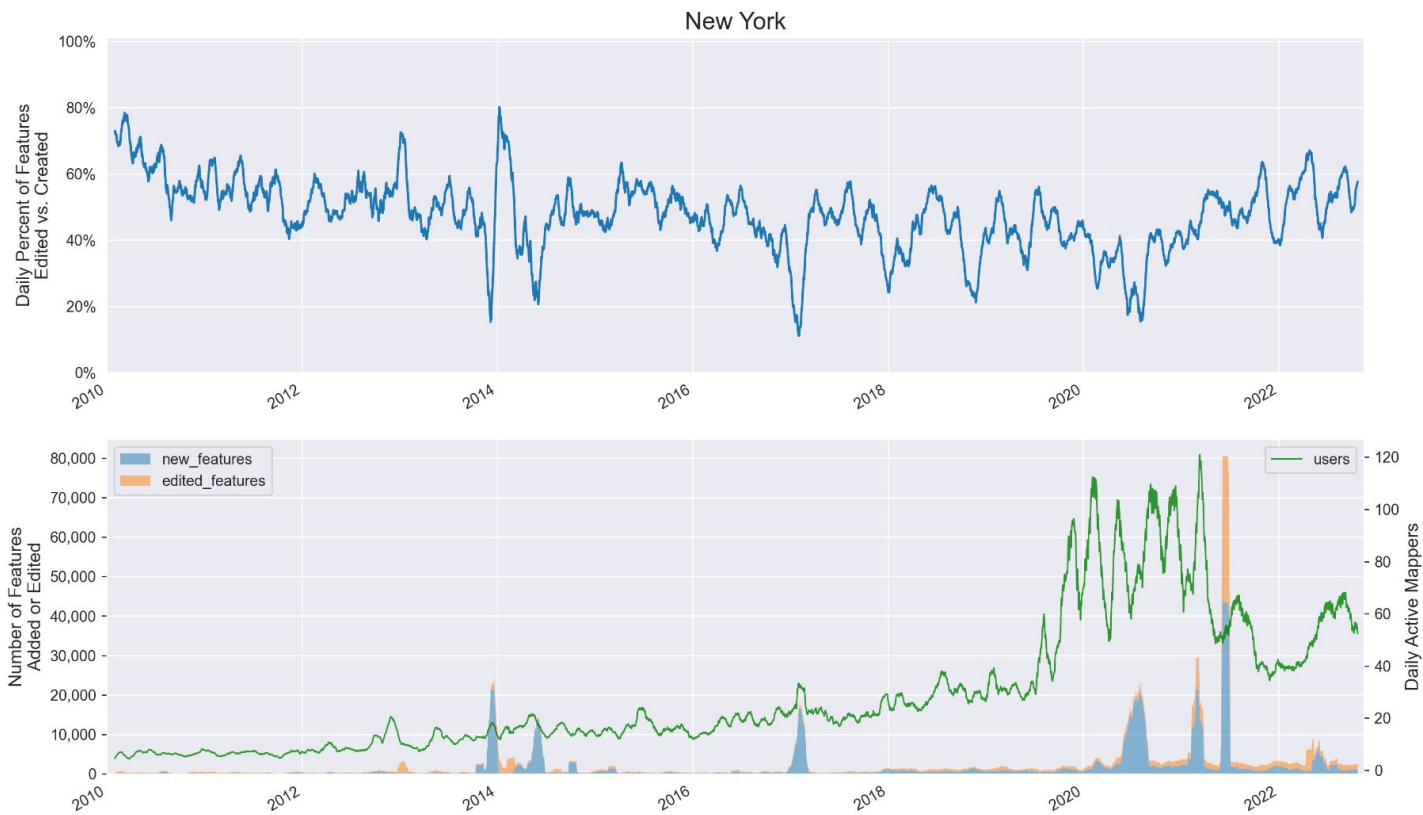


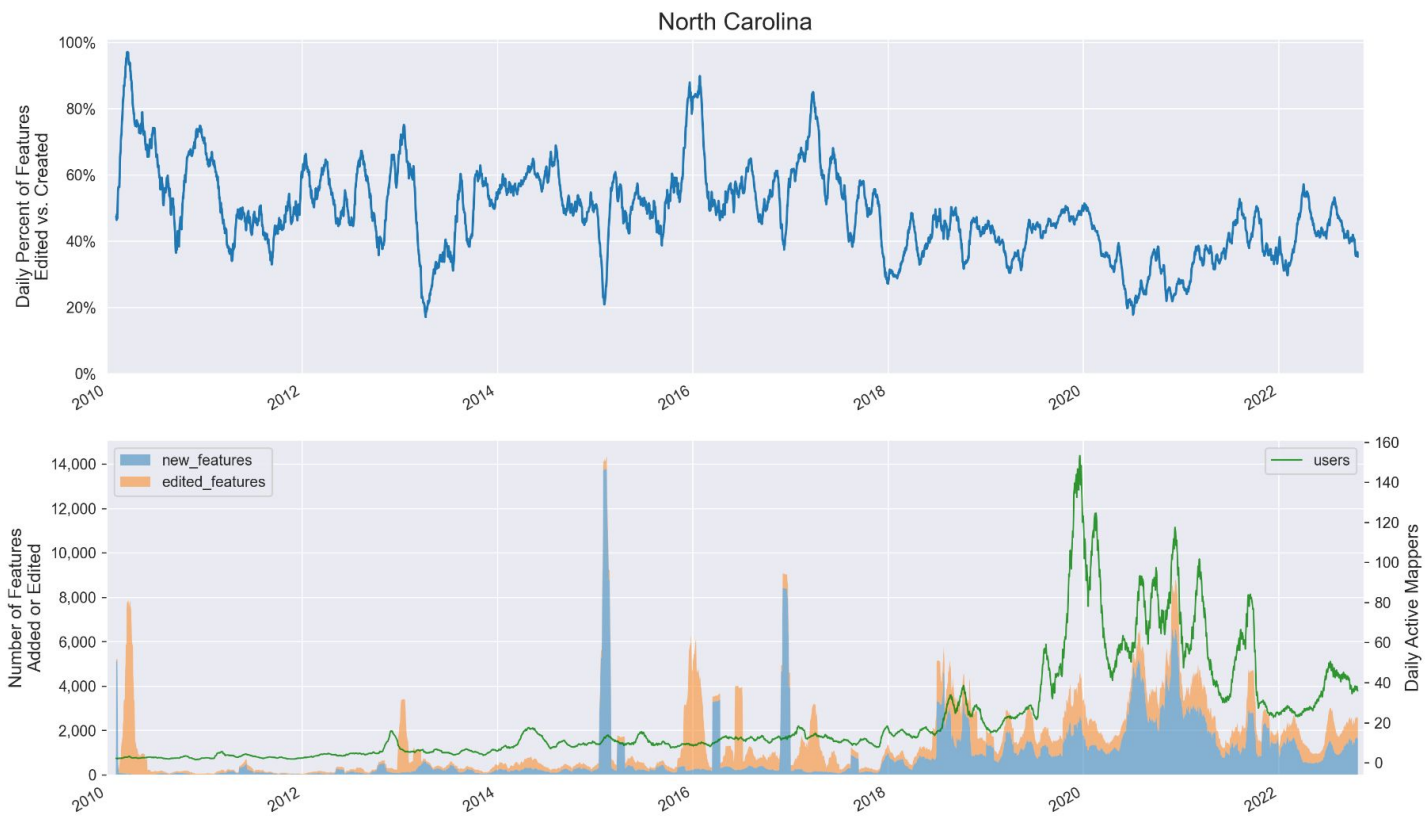


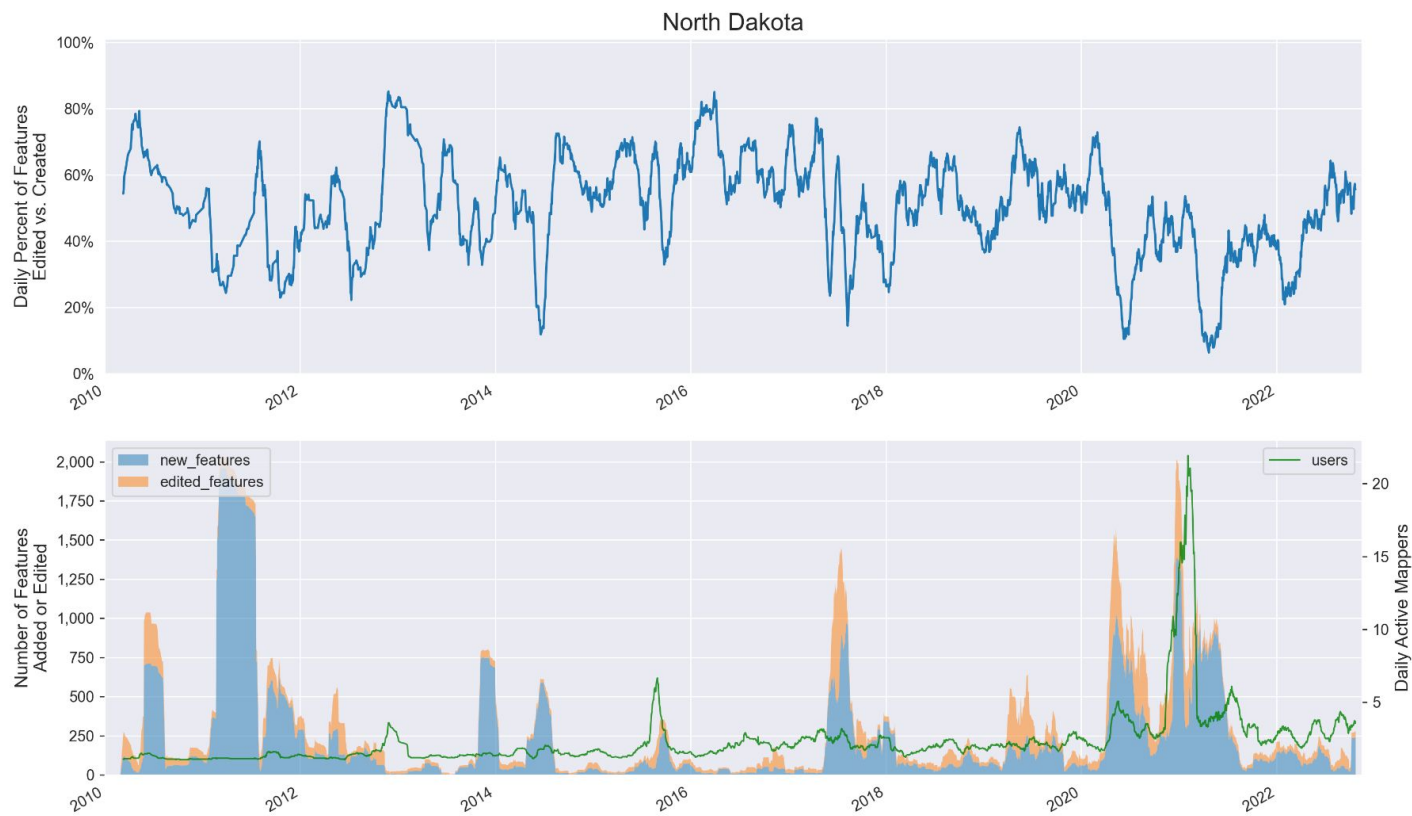


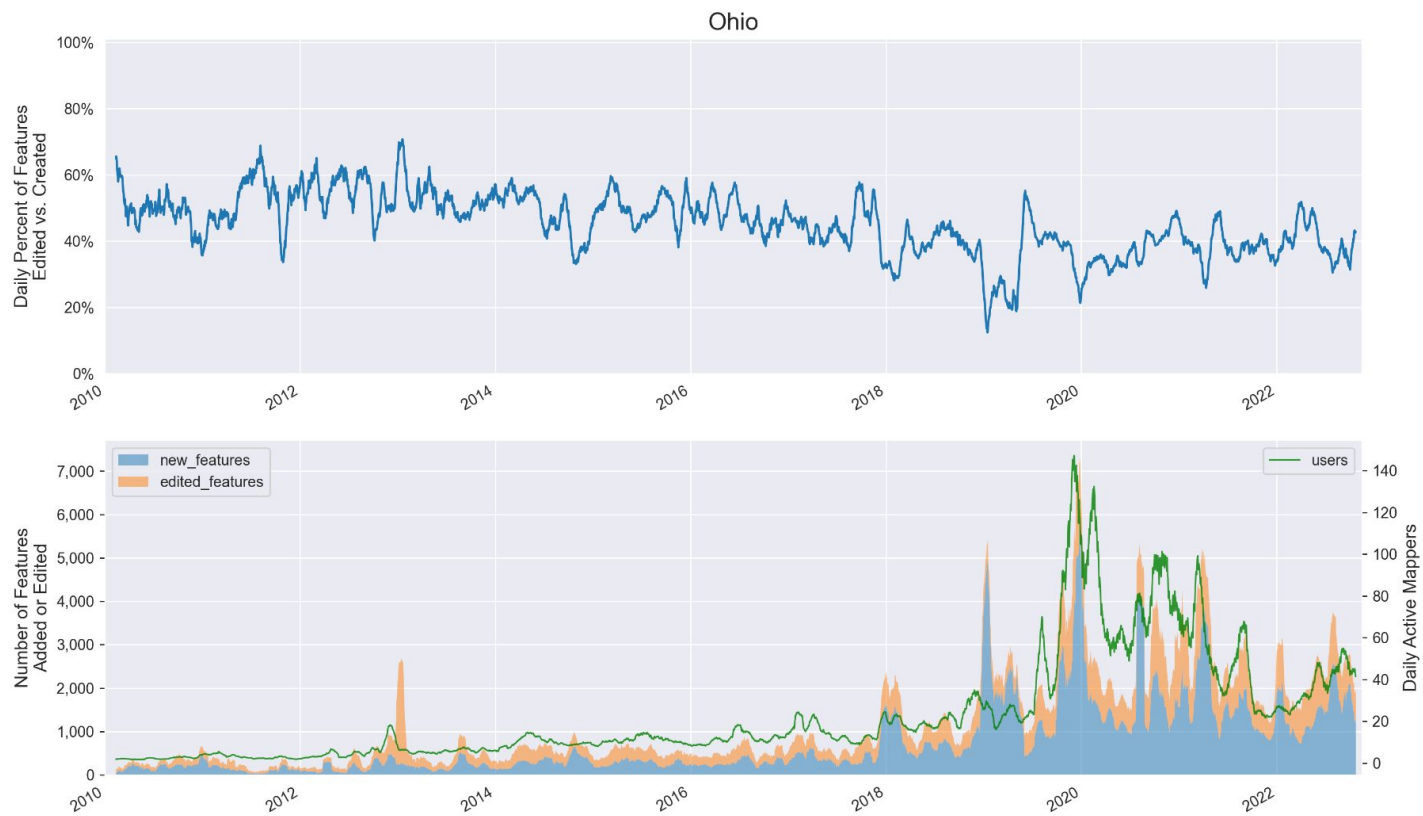
## New Mexico

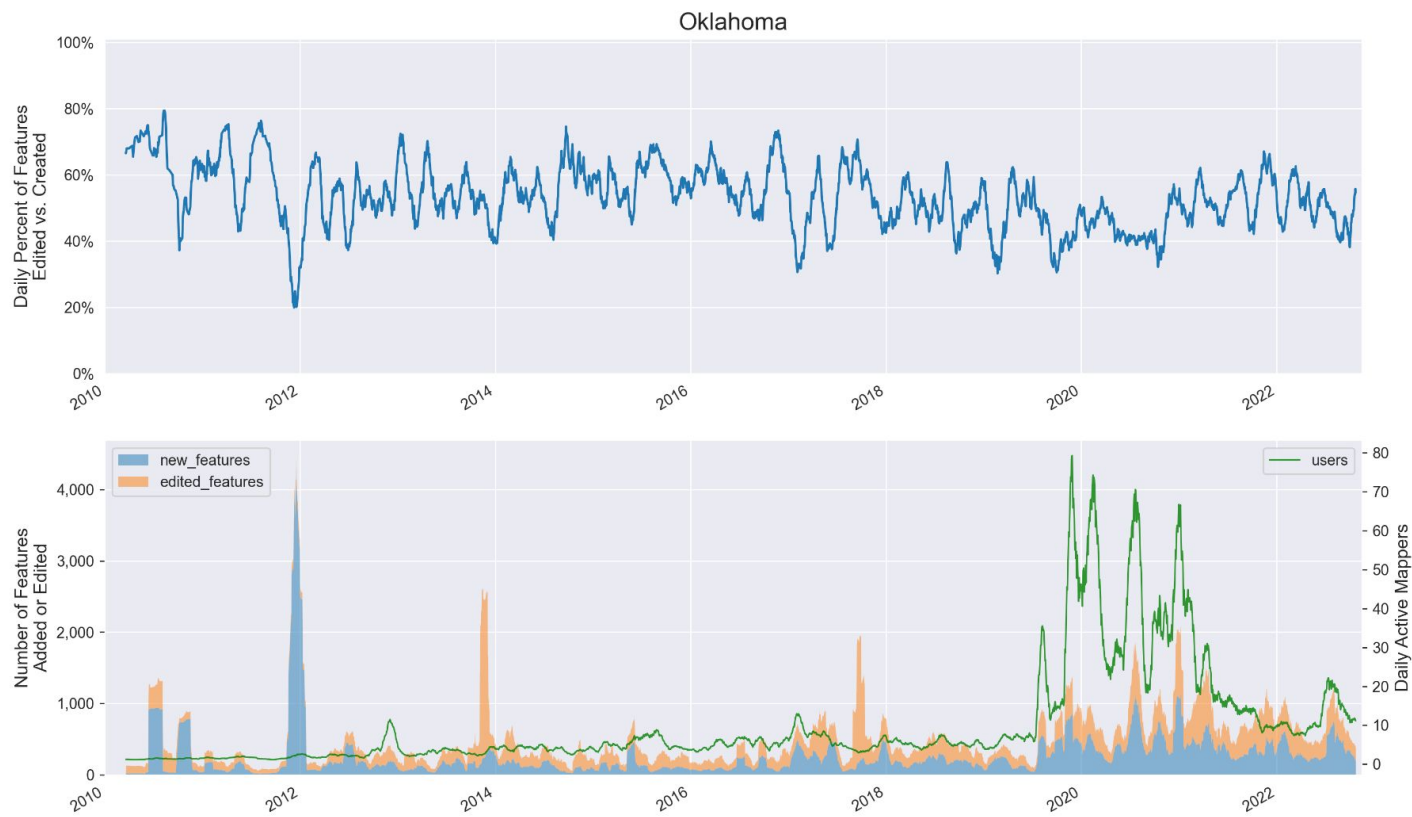


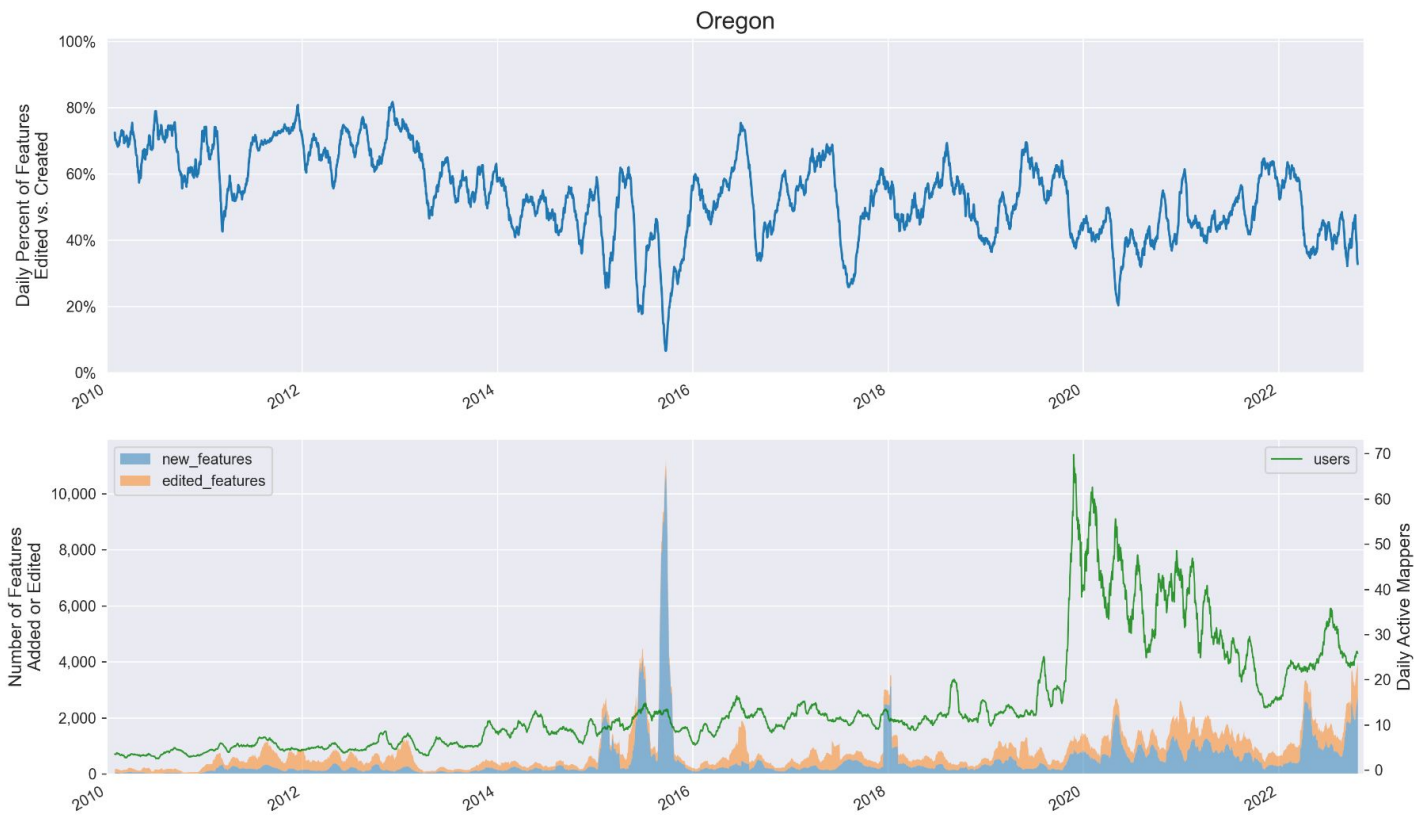




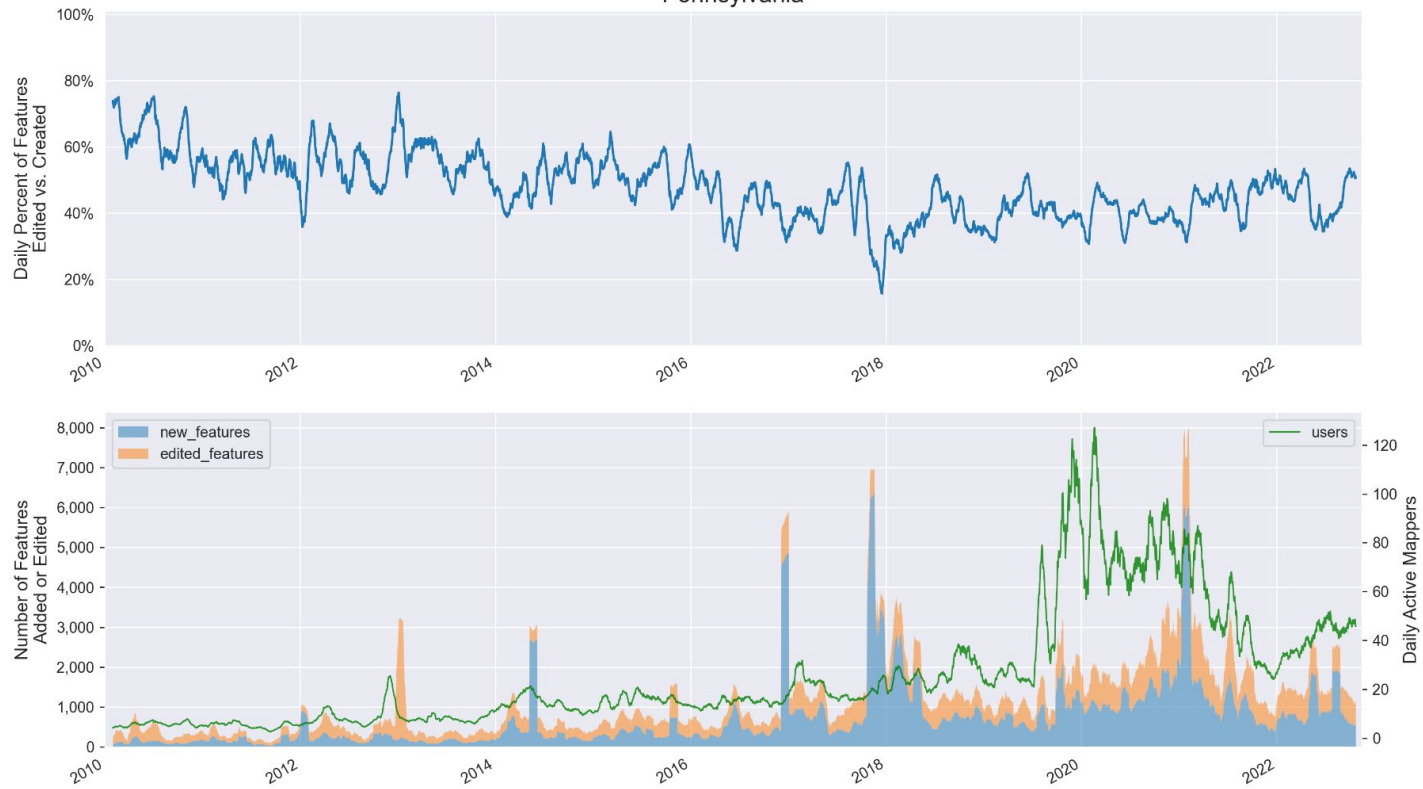


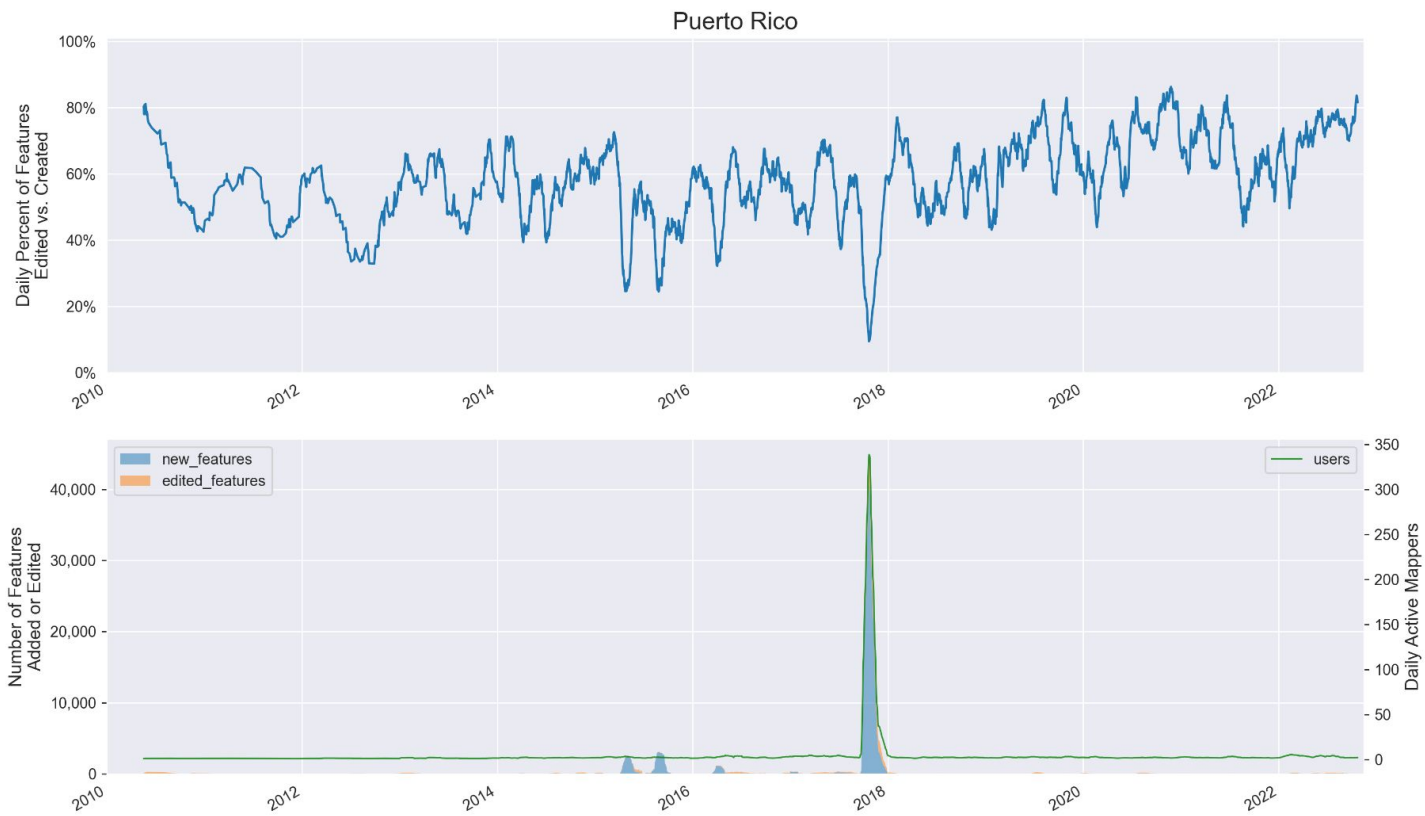






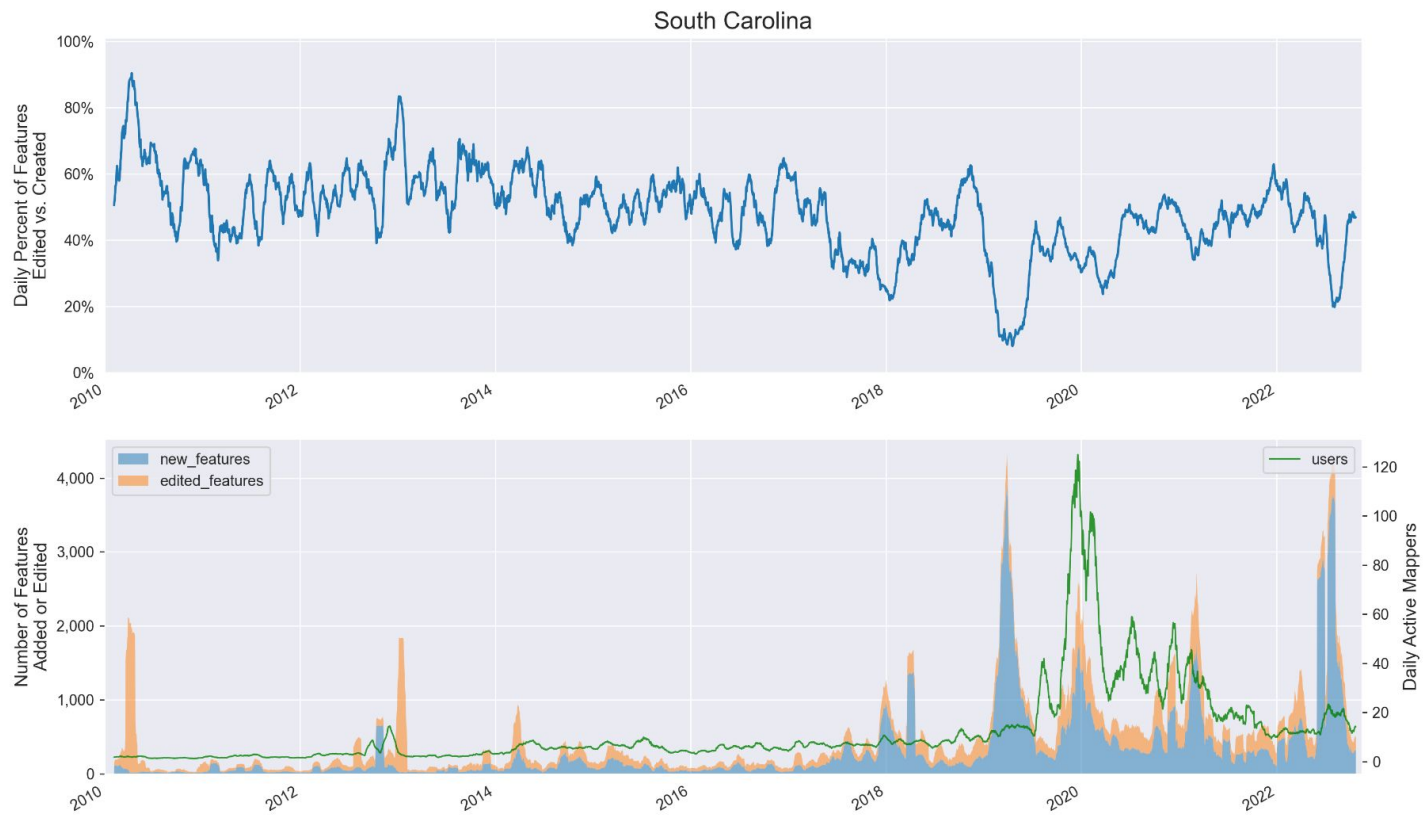
## Pennsylvania

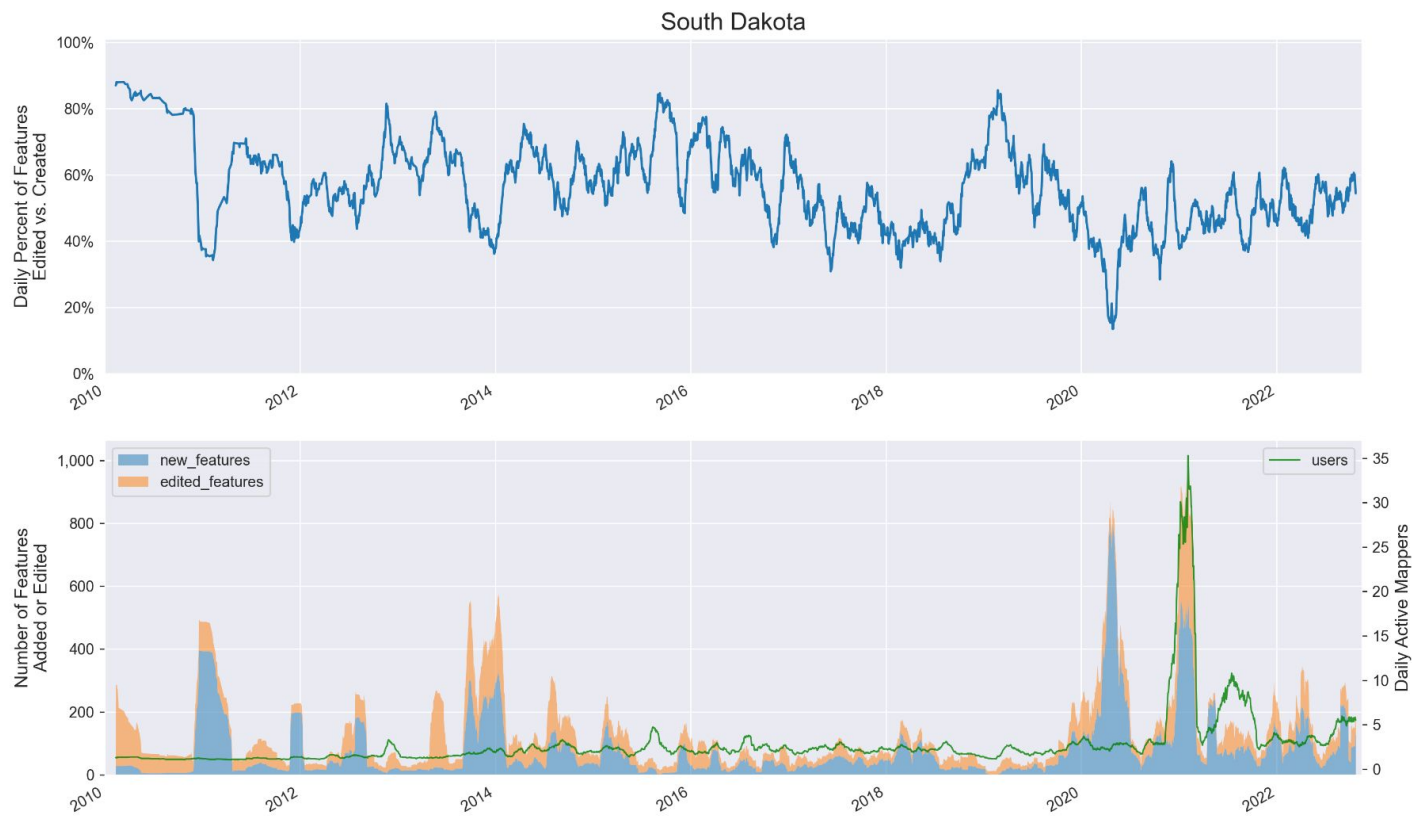




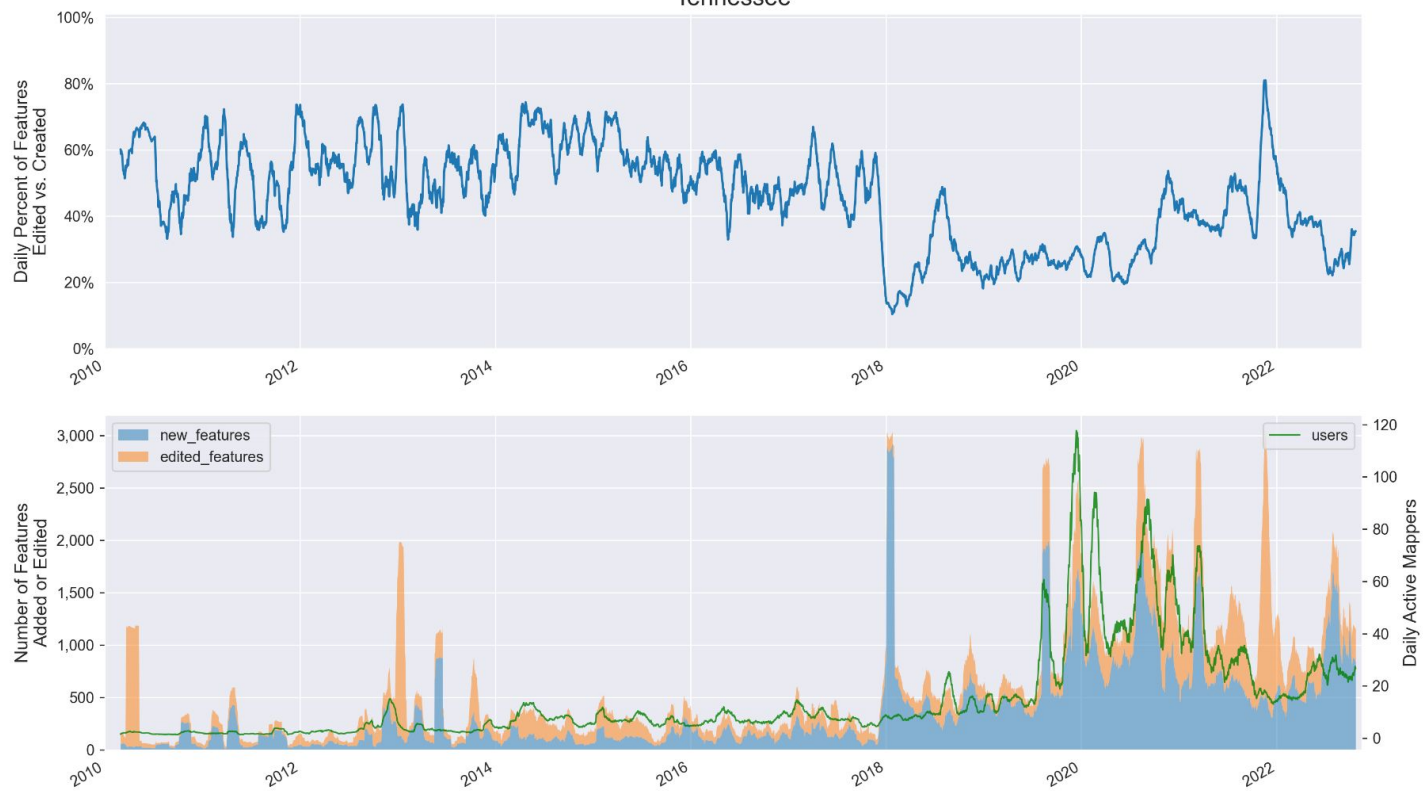
## Rhode Island



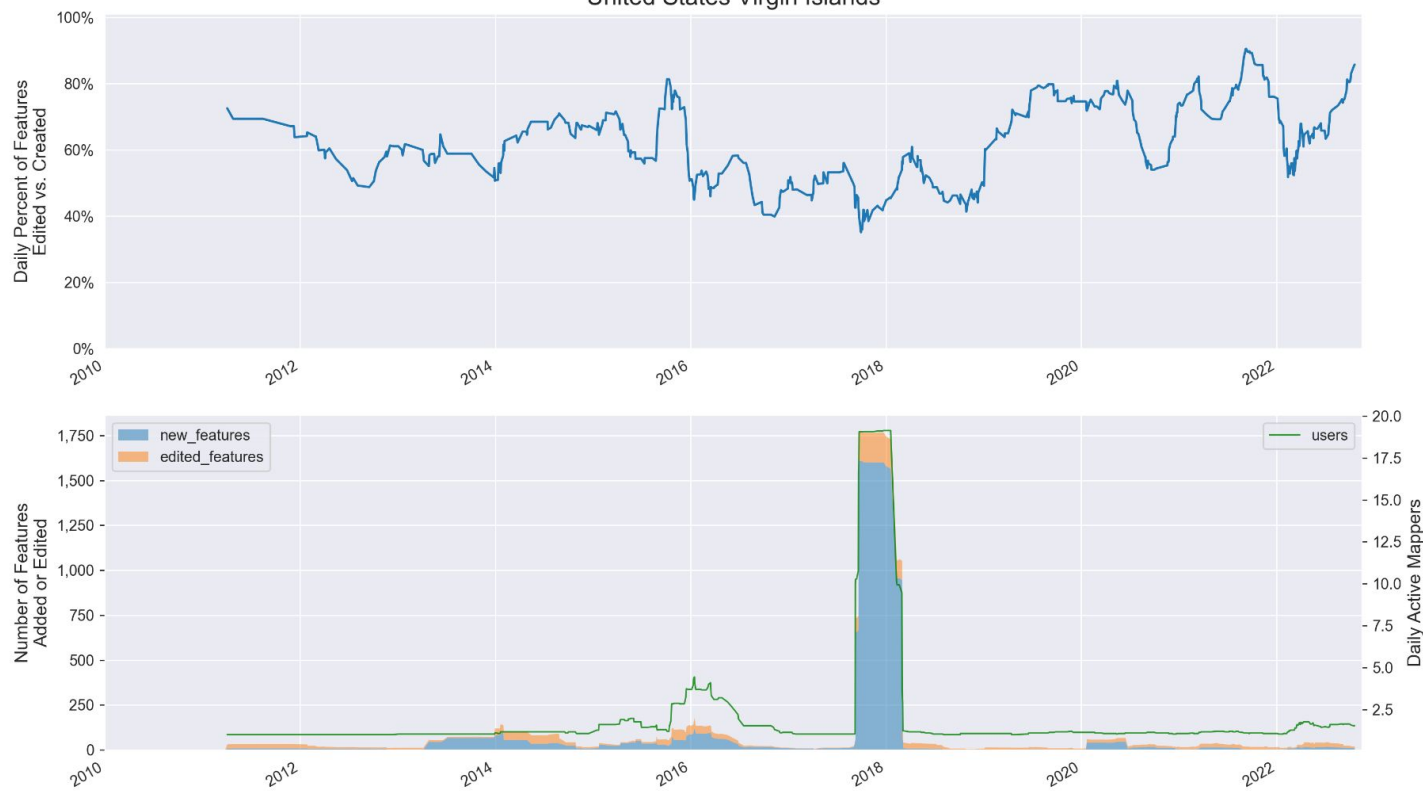


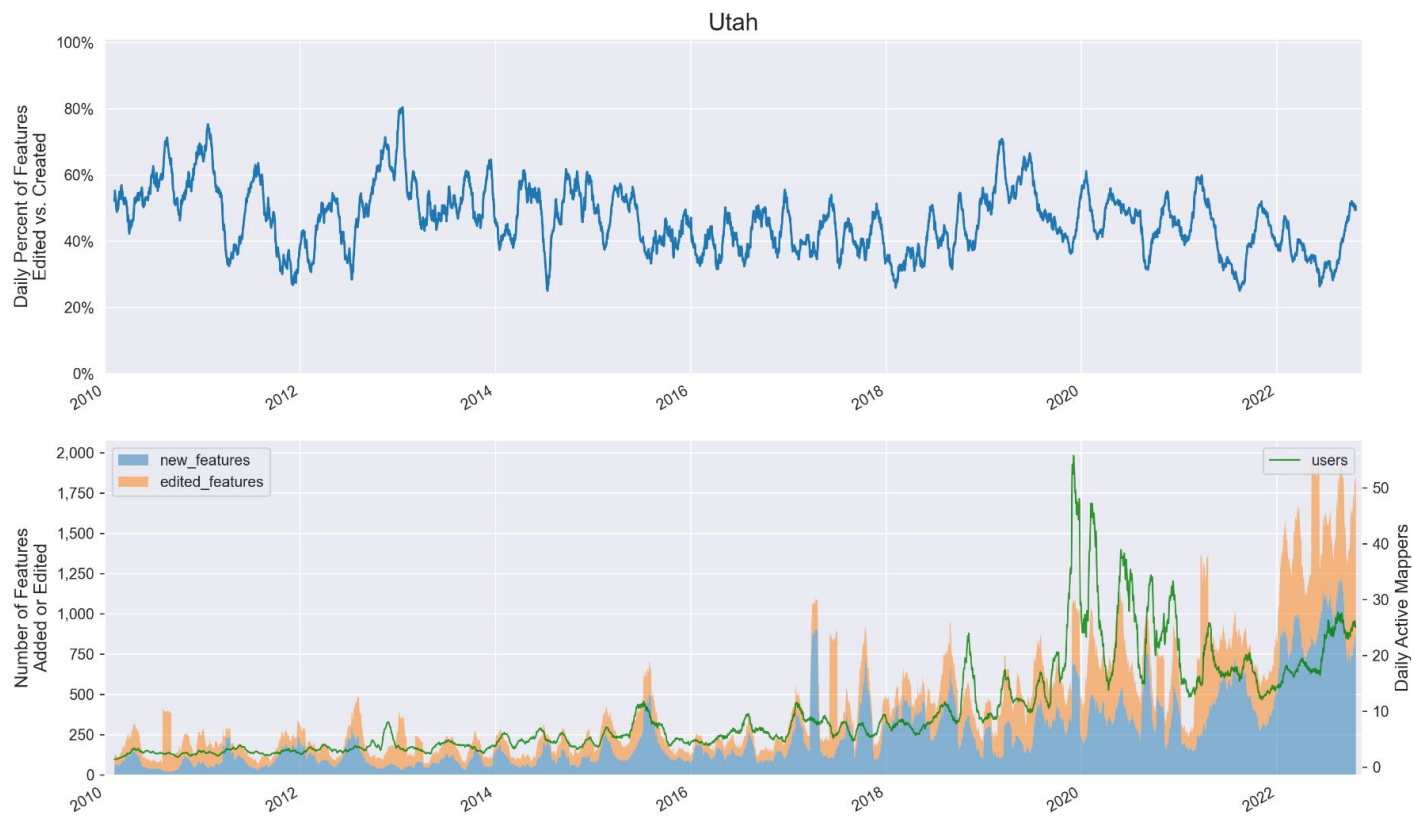


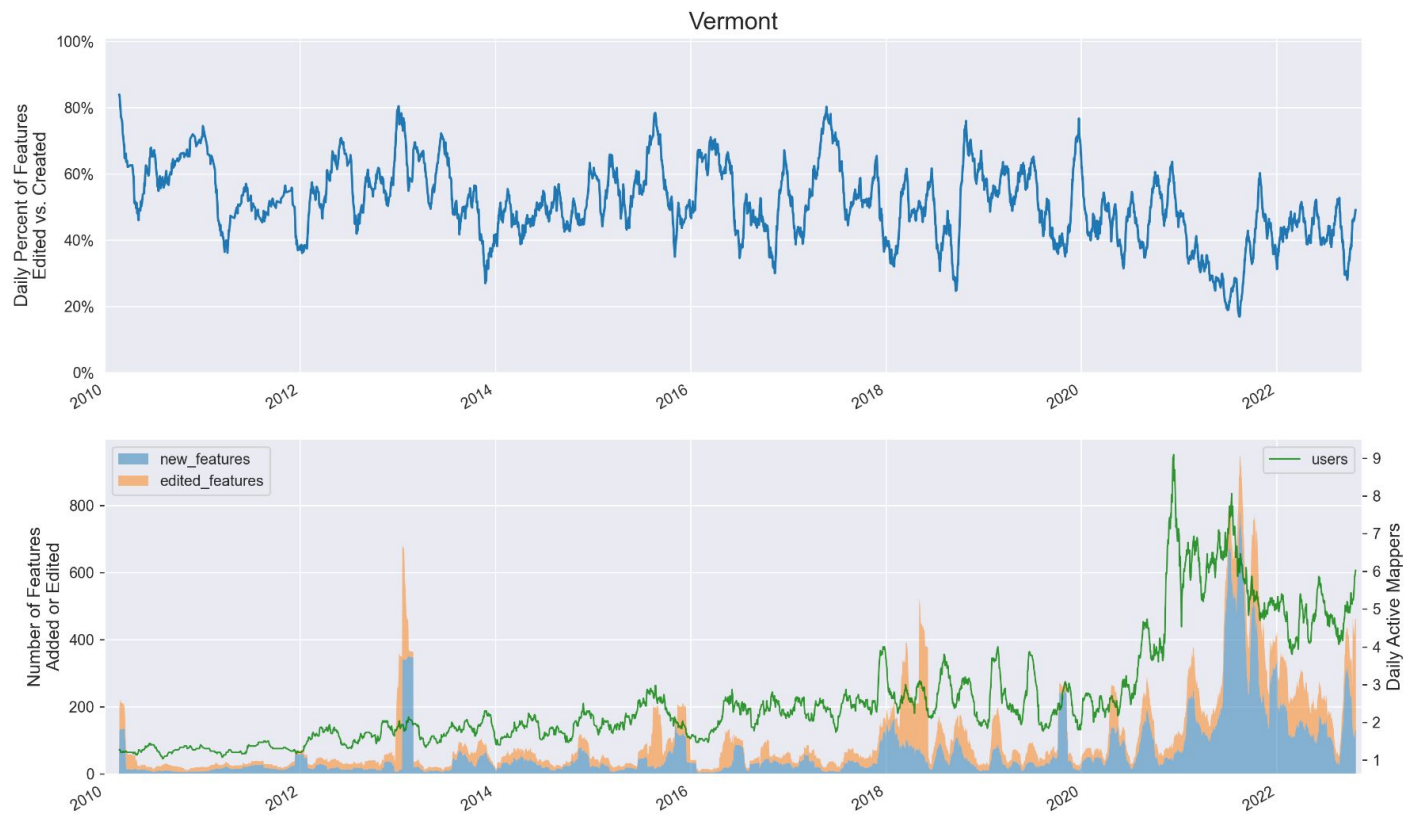
## Tennessee



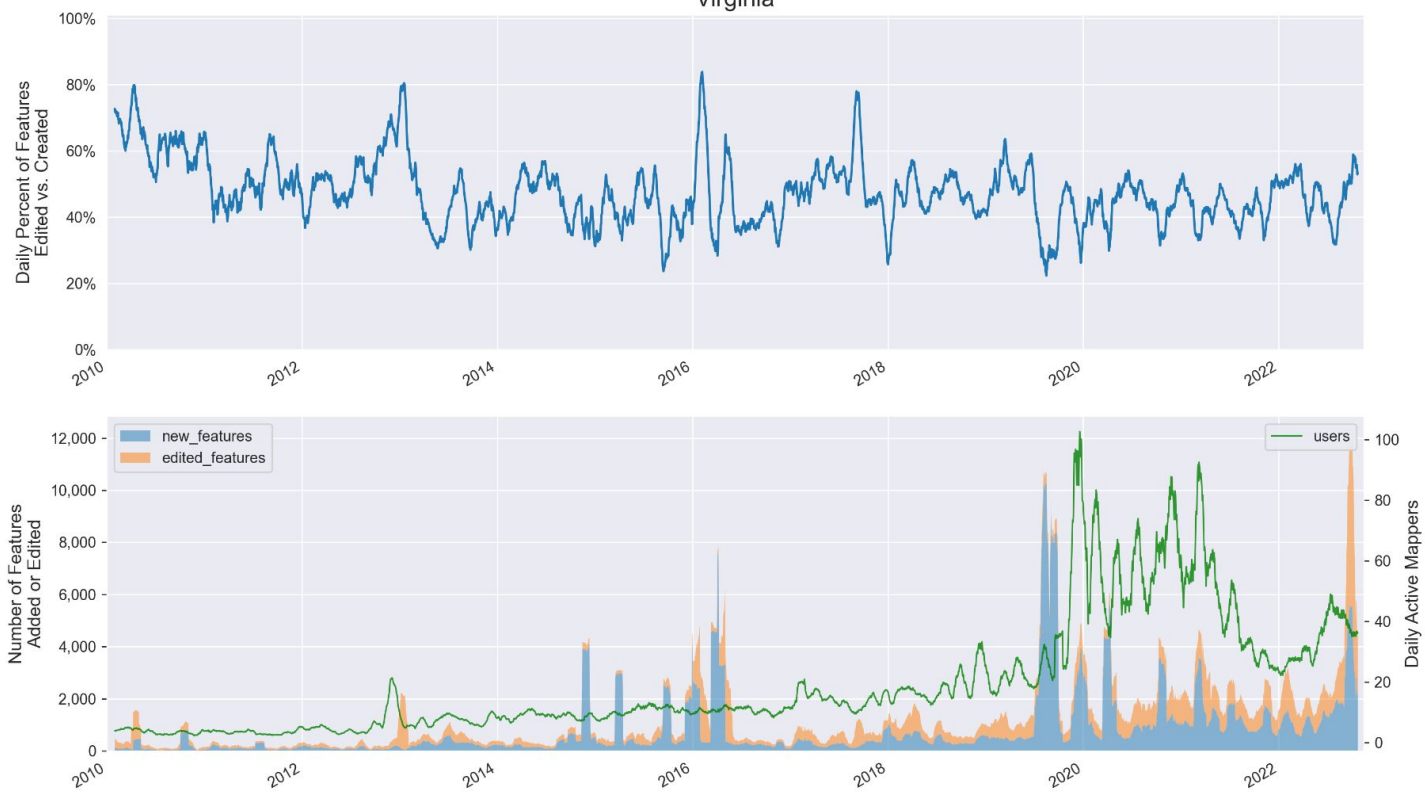
# United States Virgin Islands







## Virginia



## Washington

